



EasyGrantsID: 75345

National Fish and Wildlife Foundation – Delaware Watershed Conservation Fund 2022, Full Proposal

Title: Closson Site Restoration in the Delaware River Basin

Organization: City of Lambertville

**Grant Information**

**Title of Project**

Closson Site Restoration in the Delaware River Basin

<b>Total Amount Requested</b>	\$ 308,340.00
<b>Matching Contributions Proposed</b>	\$336,800.00
<b>Proposed Grant Period</b>	01/09/ 2023 - 06/30/ 2024

**Project Description**

The City of Lambertville is seeking funding from the Delaware Watershed Conservation Fund to address storm intensity through ecological uplift and riparian restoration on a 4.5-acre undeveloped, City-owned parcel. Specifically, the proposed project would address increased storm intensity and achieve goals of creating an ecological uplift with increased resilience; engaging community through design, education, and volunteer opportunities; and enhancing public access and passive recreation.

**Project Abstract**

The City of Lambertville seeks funds from the Delaware Watershed Conservation Fund to enhance the recently acquired Closson Farm property in the Ely Creek Watershed within the Lower Central Sub-watershed of the Delaware River Basin. The three objectives of the project are to 1) create ecological uplift through early succession forest and native meadow, regrade to attenuate stormwater, and stabilize and restore a degraded stream, 2) engage and educate the community, and 3) enhance public access and passive recreation. These objectives were identified as key priorities by the community during post-acquisition outreach. The completed project will result in 4.6 acres of restored floodplain, 150 trees planted, measurable sediment and nutrient reduction, reduced stormwater runoff, community engagement, new walking paths, and the opportunity for volunteer engagement. To accomplish these objectives the City Clerk’s office will lead the project with support from the Environmental Commission and Parks and Recreation Commission. In addition the City is partnering with Lambertville Go Wild on education and outreach, and retaining the services of Princeton Hydro and Enviroscapes.

**Organization and Primary Contact Information**

Organization	City of Lambertville
Organization Type	State or Local Government
City, State, Country	„

Region (if international)

<b>Primary Contact</b>	Cynthia Lee Ege
Position/Title	
Phone and E-mail	x ; cityclerk@lambertvillenj.org

**Additional Contacts**

Role	Name



# NFWF

EasyGrantsID: 75345

National Fish and Wildlife Foundation – Delaware Watershed Conservation Fund 2022, Full  
Proposal

Title: Closson Site Restoration in the Delaware River Basin

Organization: City of Lambertville

--	--



EasyGrantsID: 75345

National Fish and Wildlife Foundation – Delaware Watershed Conservation Fund 2022, Full Proposal

Title: Closson Site Restoration in the Delaware River Basin

Organization: City of Lambertville

### Project Location Information

Project Location Description	The project site covers 4.6 acres within the Ely Creek watershed within the Lower Central Sub-watershed of the Delaware River Basin in the City of Lambertville, Hunterdon County, NJ. The project site encompasses a perennial tributary to the Delaware River.
Project Country(ies)	North America - United States
Project State(s)	New Jersey
Project Congressional District(s)	District 7 (NJ)

### Permits and Approvals

Permits/Approvals Description:	It is anticipated that a Freshwater Wetlands General Permit 16 will be obtained in order to conduct water quality restoration activities within two tributaries to the Delaware River and to create a wetland floodplain bench adjacent to the stream’s main channel. Additionally, it is anticipated that a Freshwater Wetlands General Permit 20 will be obtained to facilitate stream bank stabilization activities including grade controls, scour protection and placement of rip-rap.
Permits/Approvals Status:	Intend to Apply
Permits/Approvals Agency-Contact Person:	NJDEP Division of Land Resource Protection
Permits/Approvals Submittal-Approval Date:	03/29/2024

Permits/Approvals Description:	A Flood Hazard Area Individual Permit will be obtained to conduct bank stabilization and channel restoration activities within two tributaries to the Delaware River. Additionally, as no Department delineation or FEMA flood mapping exists for the site and fill would be placed within the floodway for bank stabilization activities, it is anticipated that a Flood Hazard Area Verification - Method 6 will be obtained to determine the flood hazard area and floodway limits by calculation.
Permits/Approvals Status:	Intend to Apply



# NFWF

EasyGrantsID: 75345

National Fish and Wildlife Foundation – Delaware Watershed Conservation Fund 2022, Full Proposal

Title: Closson Site Restoration in the Delaware River Basin

Organization: City of Lambertville

Permits/Approvals Agency-Contact Person: NJDEP Division of Land Resource Protection

Permits/Approvals Submittal-Approval Date: 03/29/2024

Permits/Approvals Description: As construction activities will result in greater than 5,000 square feet of land disturbance, a Soil Erosion and Sediment Control Plan Certification will be obtained. The Soil Erosion and Sediment Control Plan will be prepared in compliance with the New Jersey Department of Agriculture’s Standards for Soil Erosion and Sediment Control in New Jersey.

Permits/Approvals Status: Intend to Apply

Permits/Approvals Agency-Contact Person: Hunterdon County Soil Conservation District

Permits/Approvals Submittal-Approval Date: 03/29/2024

Permits/Approvals Description: As construction activities will result in greater than one acre of land disturbance, a NJPDES Construction Activity Stormwater General Permit (5G3) will be obtained to control stormwater discharges to surface waters resulting from construction activities.

Permits/Approvals Status: Intend to Apply

Permits/Approvals Agency-Contact Person: NJDEP Division of Water Quality

Permits/Approvals Submittal-Approval Date: 03/29/2024





EasyGrantsID: 75345

National Fish and Wildlife Foundation – Delaware Watershed Conservation Fund 2022, Full Proposal

Title: Closson Site Restoration in the Delaware River Basin

Organization: City of Lambertville

**Activities and Outcomes**

**Funding Strategy: Habitat Management**

Metric: DRRF - BMP implementation for nutrient or sediment reduction - Lbs P avoided (annually)

Required: Optional

Description: Enter the amount of phosphorous prevented from entering system annually and indicate method of calculating reduction in NOTES section

**Starting Value** 0.00 Lbs P avoided (annually)  
**Target value** 1.50 Lbs P avoided (annually)

Note: Calculating using the unit areal load by land cover methodology

**Funding Strategy: Habitat Management**

Metric: DRRF - BMP implementation for nutrient or sediment reduction - Lbs sediment avoided (annually)

Required: Optional

Description: Enter the amount of sediment prevented from entering system annually and indicate method of calculating reduction in NOTES section

**Starting Value** 0.00 Lbs sediment avoided (annually)  
**Target value** 4800.00 Lbs sediment avoided (annually)

Note: Calculating using the unit areal load by land cover methodology

**Funding Strategy: Habitat Management**

Metric: DRRF - BMP implementation for stormwater runoff - Volume stormwater prevented

Required: Optional

Description: Enter the volume (in gallons) of stormwater prevented from entering the system per year; indicate type of BMP(s) in the NOTES section; include method of calculation. Please see the DWCF toolbox on the website for calculation resources.

**Starting Value** 0.00 Volume stormwater prevented  
**Target value** 5700000.00 Volume stormwater prevented

Note: Stormwater runoff will be reduced through a combination of converting maintained



EasyGrantsID: 75345

National Fish and Wildlife Foundation – Delaware Watershed Conservation Fund 2022, Full Proposal

Title: Closson Site Restoration in the Delaware River Basin

Organization: City of Lambertville

lawn to forest and meadow, as well as decompacting the soils and creating microtopography to retain water during a precipitation event. The Model My Watershed Runoff Simulation tool was used to calculate the stormwater volume reduction.

**Funding Strategy: Habitat Restoration**

Metric: DRRF - Floodplain restoration - Acres restored

Required: Optional

Description: Enter the number of floodplain acres restored. In the NOTES, indicate the % of vegetation on the pre-project site (0-20%, 21-40%, 41-60%, 61-80%, 81-100%) and the dominant vegetation being restored (Broadleaf, Conifer, Shrub, Grass, Marsh, Swamp).

**Starting Value** 0.00 Acres restored  
**Target value** 4.60 Acres restored

Note: 3.1 acres of maintained lawn and 1.5 acres of former agricultural land adjacent to a stream channel will be restored; restoration activities include invasive species treatment, soil decompaction, and planting of native vegetation.

**Funding Strategy: Habitat Restoration**

Metric: DRRF - Land, wetland restoration - # of trees planted

Required: Recommended

Description: Enter the number of trees planted and sustained (tree plantings that are urban/green infrastructure can also be included). In the NOTES section, specify the specify the landcover type prior to planting (barren, cropland, grassland, shrubland), # of acres, density per acre, and mortality rate. Do not include any additional trees planted to replace mortality in the numerical metric value.

**Starting Value** 0.00 # of trees planted  
**Target value** 150.00 # of trees planted

Note: 150 trees will be planted in the riparian area which is currently managed as a maintained lawn.

**Funding Strategy: Capacity, Outreach, Incentives**

Metric: DRRF - Outreach/ Education/ Technical Assistance - # people reached

Required: Optional

Description: Enter the number of people who responded to an offer and inquiry delivered by outreach, training, or technical assistance activities; specify the percentage of individuals reached; indicate type of audience (farmers, landowners, municipalities) in the NOTES section



# NFWF

EasyGrantsID: 75345

National Fish and Wildlife Foundation – Delaware Watershed Conservation Fund 2022, Full Proposal

Title: Closson Site Restoration in the Delaware River Basin

Organization: City of Lambertville

<b>Starting Value</b>	450.00 # people reached
<b>Target value</b>	1000.00 # people reached

Note: Approximately 450 people participated in the initial outreach effort for the property. To increase this number to a 1,000, the Project Team will engage Lambertville’s 3900 residents via the City listserv; and reach out to families of neighboring communities including West Amwell and Stockton who may use the site. By sharing outreach opportunities with project partners and supporters to expand the reach of the invitations. The project team will track comments and event attendance to estimate success on this metric.

**Funding Strategy: Capacity, Outreach, Incentives**

Metric: DRRF - Volunteer participation - # volunteers participating

Required: Optional

Description: Enter the number of volunteers participating in projects

<b>Starting Value</b>	10.00 # volunteers participating
<b>Target value</b>	50.00 # volunteers participating

Note: The Environmental Commission, Parks and Recreation Commission, and Lambertville Go Wild will recruit volunteers for clean-up, planting, and post-construction monitoring and maintenance.



Title: Closson Site Restoration in the Delaware River Basin  
 Organization: City of Lambertville

**I. PERSONNEL** **\$0.00**

Staff Name	Position	Annual Salary	Project Hours	Hourly Rate	LOE (%)	Project Salary	% Fringe	\$ Fringe	Total Personnel
<b>Totals</b>						<b>\$0.00</b>		<b>\$0.00</b>	<b>\$0.00</b>

**II. TRAVEL** **\$0.00**

**Domestic Airfare – Per Flight**

Purpose/Destination	Unit Cost	Quantity	Total Cost
<b>SubTotal</b>			<b>\$0.00</b>

**International Airfare – Per Flight**

Purpose/Destination	Unit Cost	Quantity	Total Cost
<b>SubTotal</b>			<b>\$0.00</b>

**Train – Per Ticket**

Purpose/Destination	Unit Cost	Quantity	Total Cost
<b>SubTotal</b>			<b>\$0.00</b>



Title: Closson Site Restoration in the Delaware River Basin  
 Organization: City of Lambertville

**Rental Car – Per Day**

Purpose/Destination	Days/Duration	Unit Cost	Quantity	Total Cost

**SubTotal** \$0.

**Taxis – Per Trip**

Purpose/Destination	Unit Cost	Quantity	Total Cost

**SubTotal** \$0.

**Mileage – Per Mile**

Purpose/Destination	Unit Cost	Quantity	Total Cost

**SubTotal** \$0.

**Gasoline – Per Gallon**

Purpose/Destination	Unit Cost	Quantity	Total Cost

**SubTotal** \$0.

**Per Diem (M&IE) – Per Day**

Purpose/Destination	Days/Duration	Unit Cost	Quantity	Total Cost

**SubTotal** \$0.



Title: Closson Site Restoration in the Delaware River Basin  
 Organization: City of Lambertville

**Lodging – Per Night**

Purpose/Destination	Days/Duration	Unit Cost	Quantity	Total Cost

**SubTotal** \$0.

**Meals (no M&IE) – Per Meal**

Purpose/Destination	Days/Duration	Unit Cost	Quantity	Total Cost

**SubTotal** \$0.

**III. EQUIPMENT \$0.**

Item Name	Description	Unit Cost	Quantity	Total Cost

**IV. MATERIALS & SUPPLIES \$0.**

Type	Purpose	Unit of Measure	Unit Cost	Quantity	Total Cost

**V. CONTRACTUAL SERVICES \$308,340.**

**Subcontract/Contract – Per Agreement**

Contractor Name	Description	Total Cost
Princeton Hydro	Design, Permitting, and Construction Services	\$308,340.00

**SubTotal** \$308,340.



Title: Closson Site Restoration in the Delaware River Basin  
 Organization: City of Lambertville

**Subgrant – Per Agreement**

Subrecipient	Description	Total Cost

**SubTotal** **\$0.**

**VI. OTHER DIRECT COSTS** **\$0.00**

Type	Purpose	Unit of Measure	Unit Cost	Quantity	Total Cost

**VII. TOTAL DIRECT COSTS** **\$308,340.00**

**VIII. INDIRECT COSTS** **\$0.00**

Explanation of Modified Total Direct Cost Base(MTDC)	Rate Type	NICRA Expiration	\$MTDC	Rate(%)	Total Cost

**IX. TOTAL PROJECT COSTS** **\$308,340.00**



Title: Closson Site Restoration in the Delaware River Basin  
Organization: City of Lambertville

### Budget Narrative

**Budget Narrative:** The requested budget is to support engineering, permitting, and construction services. Outreach, grant administration, landscape design, and educational opportunities will be provided by in-kind match by project partners.

#### 1. Personnel

Personnel -

#### 2. Travel

Domestic Airfare - Per Flight -

International Airfare - Per Flight -

Train - Per Ticket -

Rental Car - Per Day -

Taxis - Per Trip -

Mileage - Per Mile -

Gasoline - Per Gallon -

Per Diem (M&IE) - Per Day -

Lodging - Per Night -

Meals (No M&IE) - Per Meal -





NFWF

EasyGrantsID: 75345  
National Fish and Wildlife Foundation –  
Delaware Watershed Conservation Fund  
2022, Full Proposal

Title: Closson Site Restoration in the Delaware River Basin  
Organization: City of Lambertville

### 3. Equipment

Equipment -

### 4. Materials and Supplies

Materials and Supplies -

### 5. Contractual Services

Subcontract/Contract - Per  
Agreement -  
Subgrant - Per Agreement -

---

### 6. Other Direct Costs

Other Direct Costs -

### 7. Indirect Costs



NFWF

EasyGrantsID: 75345  
National Fish and Wildlife Foundation –  
Delaware Watershed Conservation Fund  
2022, Full Proposal

Title: Closson Site Restoration in the Delaware River Basin  
Organization: City of Lambertville

Indirect Costs -



EasyGrantsID: 75345

National Fish and Wildlife Foundation – Delaware Watershed Conservation Fund 2022, Full Proposal

Title: Closson Site Restoration in the Delaware River Basin

Organization: City of Lambertville

**Matching Contributions**

<b>Matching Contribution Amount:</b>	\$19,900.00
<b>Type:</b>	In-kind
<b>Status:</b>	Pledged
<b>Source:</b>	City of Lambertville
<b>Source Type:</b>	Non-Federal
<b>Description:</b>	City staff time to participate in the design development, outreach activities, coordinate volunteer participation, and administer the grant

<b>Matching Contribution Amount:</b>	\$95,500.00
<b>Type:</b>	In-kind
<b>Status:</b>	Pledged
<b>Source:</b>	Parks and Recreation Commission, City of Lambertville
<b>Source Type:</b>	Non-Federal
<b>Description:</b>	Manage public outreach meetings, lead guided site walks, supply tree and shrub saplings, plant trees and shrubs, manage invasive species, recruit, train, and supervise volunteers, manage City resources, perform site maintenance

<b>Matching Contribution Amount:</b>	\$40,000.00
<b>Type:</b>	In-kind
<b>Status:</b>	Pledged
<b>Source:</b>	Environmental Commission, City of Lambertville
<b>Source Type:</b>	Non-Federal
<b>Description:</b>	Participate in outreach events and recruit, train, and supervise volunteers

<b>Matching Contribution Amount:</b>	\$98,100.00
<b>Type:</b>	In-kind
<b>Status:</b>	Pledged
<b>Source:</b>	Lambertville Goes Wild
<b>Source Type:</b>	Non-Federal
<b>Description:</b>	Participate in design development and landscape plans, design interpretive



EasyGrantsID: 75345

National Fish and Wildlife Foundation – Delaware Watershed Conservation Fund 2022, Full Proposal

Title: Closson Site Restoration in the Delaware River Basin

Organization: City of Lambertville

	signs, develop interpretive brochures and scavenger hunts, lead guided site walks, plant trees and shrubs, manage invasive species, recruit, train, and supervise volunteers
--	--

<b>Matching Contribution Amount:</b>	\$33,300.00
<b>Type:</b>	In-kind
<b>Status:</b>	Pledged
<b>Source:</b>	Princeton Hydro, LLC
<b>Source Type:</b>	Non-Federal
<b>Description:</b>	Lead the concept design and provide discounted engineering, permitting, and construction services

<b>Matching Contribution Amount:</b>	\$25,000.00
<b>Type:</b>	Cash
<b>Status:</b>	Intend to Apply
<b>Source:</b>	County of Hunterdon Open Space
<b>Source Type:</b>	Non-Federal
<b>Description:</b>	Access City of Lambertville banked funds with the County Open Space fund

<b>Matching Contribution Amount:</b>	\$25,000.00
<b>Type:</b>	Cash
<b>Status:</b>	Intend to Apply
<b>Source:</b>	NJ Corporate Wetlands Restoration Program (NJCWRP)
<b>Source Type:</b>	Non-Federal
<b>Description:</b>	The NJCWRP is an innovative public-private initiative aimed at restoring, preserving, enhancing and protecting aquatic habitats throughout New Jersey. They offer funding for aquatic habitat restoration projects such as this.

<b>Total Amount of Matching Contributions:</b>	\$336,800.00
--	--------------



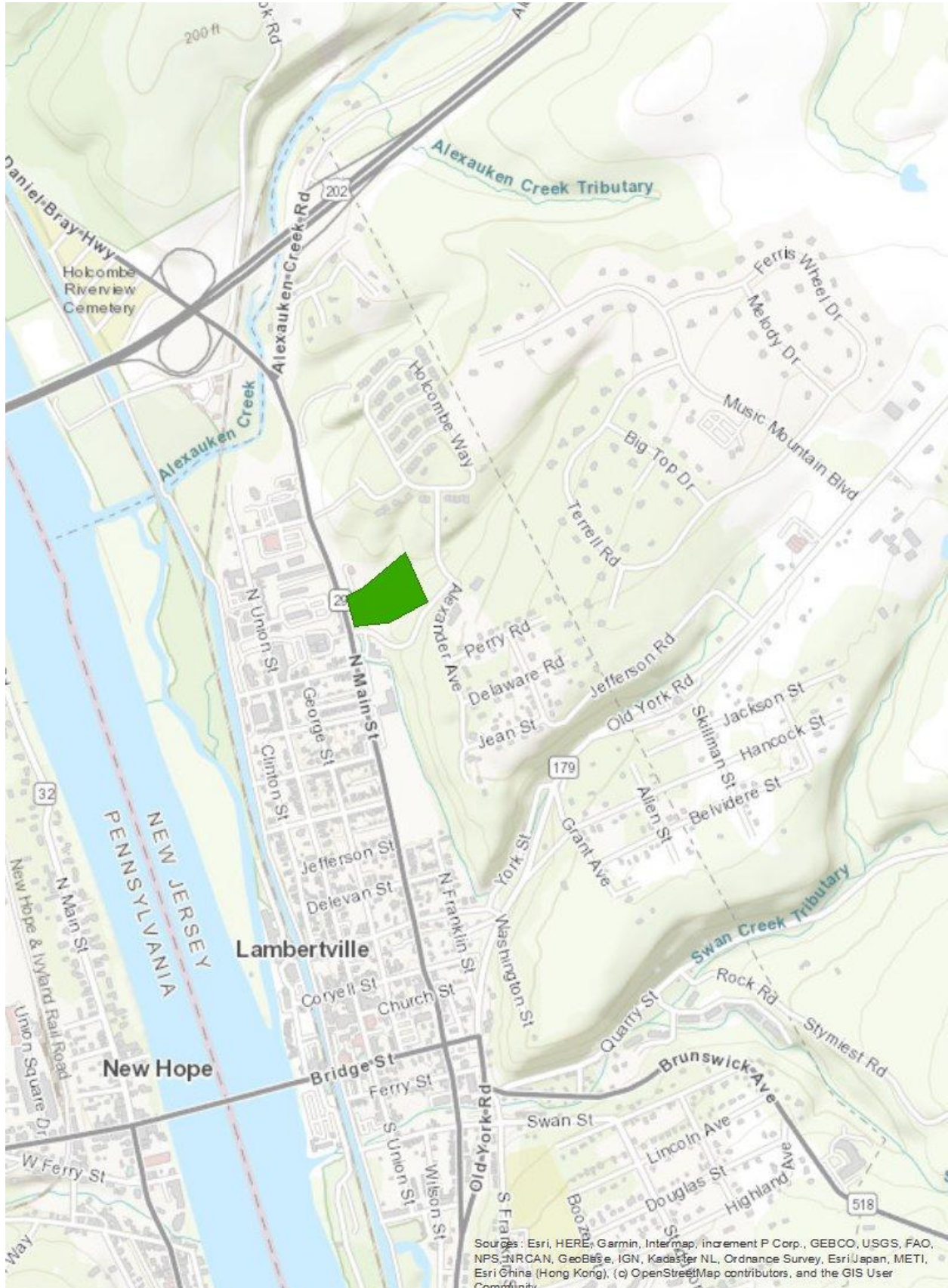
# NFWF

EasyGrantsID: 75345

National Fish and Wildlife Foundation – Delaware Watershed Conservation Fund 2022, Full Proposal

Title: Closson Site Restoration in the Delaware River Basin

Organization: City of Lambertville



Sources: Esri, HERE, Garmin, Intermap, increment P Corp., GEBCO, USGS, FAO, NPS, NRCAN, GeoBasis, IGN, Kadaster NL, Ordnance Survey, Esri Japan, METI, Esri China (Hong Kong), (c) OpenStreetMap contributors, and the GIS User Community



EasyGrantsID: 75345

National Fish and Wildlife Foundation – Delaware Watershed Conservation Fund 2022, Full Proposal

Title: Closson Site Restoration in the Delaware River Basin

Organization: City of Lambertville

The following pages contain the uploaded documents, in the order shown below, as provided by the applicant:

Upload Type	File Name	Uploaded By	Uploaded Date
DWCF Full Proposal Narrative 2022	Lambertville - DWCF Full Proposal Narrative 2022.docx.pdf	Ege, Cynthia	03/31/2022
Project Map	Restoration_Plan_Closson_Site_2022.03.18.pdf	Ege, Cynthia	03/31/2022
Letters of Support	_NFWF_Closson_Letters_of_Support.pdf	Ege, Cynthia	03/31/2022
Conceptual Plans	Restoration_Plan_Closson_Site_Construction_Details_20220323.pdf	Ege, Cynthia	03/31/2022
Photos - Jpeg	IMG_0433.JPG	Ege, Cynthia	03/31/2022
Photos - Jpeg	IMG_0435.JPG	Ege, Cynthia	03/31/2022
Photos - Jpeg	IMG_0438.JPG	Ege, Cynthia	03/31/2022
Statement of Litigation	Lambertville - Grant Statement of Litigation.doc	Ege, Cynthia	03/31/2022
Board of Trustees, Directors, or equivalent	Board of Directors Statement.docx	Ege, Cynthia	03/31/2022
Applicant Controls Questionnaire	NFWF SIGNED QUESTIONNAIRE.pdf	Ege, Cynthia	03/31/2022

The following uploads do not have the same headers and footers as the previous sections of this document in order to preserve the integrity of the actual files uploaded.





# NFWF

## Delaware Watershed Conservation Fund 2022 Conservation Action Grants: Full-proposal Project Narrative Template

**Instructions:** Save this document on your computer and complete the narrative in the format provided. The narrative may not exceed ten pages, and smaller grants with fewer partners may be as few as five pages. Please retain the outline format below, but you may delete the instructions associated with each element. Once complete, upload this document into the online application as instructed.

**Project Type:** Please select the DWCF grant category for the proposed project.

**X - Conservation Action**

- Incubation and Investment
- Capacity Building
- Nature Based Solutions

**A. Project Priority:**

The City of Lambertville seeks funds from the Delaware Watershed Conservation Fund to enhance the recently acquired Closson Farm property in the Ely Creek Watershed within the Lower Central Sub-watershed of the Delaware River Basin. The drivers for the prioritization of this project are two-fold: rectify destabilization of Ely Creek that occurred during Ida and proactively design the site for increased resilience to future storm events in order to lessen decrease stormwater runoff volume, decrease nitrogen, phosphorus, and sediment pollutant loading to the tributary and thus improve the water quality of the Delaware River. Additionally, the project will have environmental, social, and economic benefits for the community including stream bank stabilization, sediment control, runoff flow reduction, and improved public access.

The three objectives of the project are to 1) create ecological uplift through early succession forest and native meadow, regrade to attenuate stormwater, and stabilize and restore a degraded stream, 2) engage and educate the community, and 3) enhance public access and passive recreation. These objectives were identified as key priorities by the community during post-acquisition outreach. The completed project will result in 4.6 acres of restored floodplain, 150 trees planted, measurable sediment and nutrient reduction, reduced stormwater runoff, community engagement, new walking paths, and the opportunity for volunteer engagement. Additionally, the City plans to engage the community as partners in the design-build process, and to create post-construction education through interpretive signage and create year-round public access and connectivity to existing community walking paths.

Overall this project will help achieve goals outlined in all four DWCF Strategic Program Areas, as well as Cross-Program Activities 1, 2, and 4. Specifically, the project aligns with the following focus areas within the strategic program areas:

- Conserve and restore riparian buffers (*Delaware River Basin Restoration Program Area #1*)
- Control existing invasive species infestations and promote native communities (*Delaware River Basin Restoration Program Area #1*)
- Reduce non-point source pollution including sedimentation from agricultural, municipal, and urban landscapes (*Delaware River Basin Restoration Program Area #2*)
- Reduce nutrient inputs into the river and tributaries (*Delaware River Basin Restoration Program Area #2*)
- Reconnect floodplains to adjacent waterways to improve resiliency and reduce flood damage (*Delaware River Basin Restoration Program Area #3*)
- Conserve and restore riparian corridors to improve habitat and reduce flooding (*Delaware River Basin Restoration Program Area #3*)

- Identify stormwater management challenges and work with local governments to increase opportunities for natural stormwater management to reduce flooding (*Delaware River Basin Restoration Program Area #3*)
- Increase and maintain access to protected land with public benefits (*Delaware River Basin Restoration Program Area #4*)
- Increase and maintain amount of recreational opportunities and experiences (*Delaware River Basin Restoration Program Area #4*)

To accomplish these objectives the City Clerk's office will lead the project with support from the Environmental Commission and Parks and Recreation Commission. In addition the City is partnering with Lambertville Go Wild on education and outreach, and retaining the services of Princeton Hydro and Enviroscapes. This project brings together experts in grant management and project oversight, community engagement and education, restoration design and construction, water resources management, and ecological restoration. These organizations form the core Project Team that will advance the restoration planning, design, and construction, with support from additional partners. In addition, to date, the City has received letters of support from seven additional regional organizations with an interest in this project, with two additional letters anticipated..

## **B. Project Context:**

The City of Lambertville in Hunterdon County, NJ is located along the Delaware River in prime American Shad spawning territory. The American Shad have long been central to the heart of the Community, with both commercial and recreational fisherman using Lambertville to haul catches throughout the season. In 1981, Lambertville hosted a festival to celebrate the return of the American Shad to the region after water quality improvements allowed the fish to reach this extent of the river. Almost every year since, the City hosts Shadfest to promote the river and its aquatic life. Preserving and restoring water quality is a core value within the City, given its strong cultural connection with this iconic species. This project gives the City a unique opportunity to enhance the water quality of Ely Creek, a direct tributary of the Delaware, within the City limits by restoring 4.5 acres of undeveloped land.

In May of 2021, the City of Lambertville acquired the Closson Farm, a historic property in the northern reach of town. This property has both historic and current significance to the community, in addition to being the last remaining large undeveloped parcel. On the property sits the Holcombe house, aka Washington's Headquarters, built about 1724, along with some other barns from the same era. Most recently, the property was used as a homestead and farm market, with the public allowed to sled down the vacant hill in the winter. After the acquisition, the City's Community Action Team spent months gathering feedback from the community on what should be done on the property. This effort informed the current concept for this project. Based on the feedback the City will preserve the buildings, but also use part of the site to provide a gathering space with walking paths, wildflower meadows, education, and flood/climate change mitigation.

When Ida struck the City in September 2021 it accelerated the need to address this site, stabilize Ely Creek, and leverage the parcel's location to attenuate stormwater coming down the hillside. The City is prone to flooding and there are two other flood risk management efforts on Ely Creek. Previously, the City installed a flood mitigation project where Ely Creek drains into the Delaware River to reduce backflooding into the community from the Delaware. This effort has been effective in managing risk from the river, but Ida highlighted the ongoing vulnerability from precipitation. The second flood control project on the waterway is just downstream of the project site. The City secured a grant from NRCS to repair the road culvert adjacent to the property that experienced significant damage in Ida. The Closson Site Restoration Project will help prevent future damage to the culvert through its attenuation and restoration outcomes.

An opportunity to conduct a restoration project of this size, at a location with the visibility and impact, is rare in the City of Lambertville. The Closson Farm property is the last remaining undeveloped parcel of its size and the fact that the family chose to pursue an acquisition by the City demonstrates how valuable adding open space is to the community, and those that care for it. This timely project will meet both the community's interests for the site and benefit the larger



Delaware Watershed by improving water quality, enhancing public access and recreation, and increasing education and awareness of the value of ecosystems and the services they provide within the Watershed. .

This is the City of Lambertville's first Delaware Watershed Conservation Fund grant. In addition to in-kind contributions of time and resources from city staff and volunteers, we intend to apply for matching funds from the County's Open Space Fund and the New Jersey Corporate Wetlands Restoration Partnership.

### **C. Objectives and Methods:**

For this project we've identified three objectives that align with all four DWCF Strategic Program Areas, as well as Cross-Program Activities 1, 2, and 4.

#### **1. Create Ecological Uplift with Increased Resilience, (DWCF Strategic Program Area #1, #2, #3, Cross-Program Activities #1, #2, and #4)**

##### *Methods:*

The primary focus of this project is to enhance the ecological value of the property by stabilizing Ely Creek and converting the landcover to riparian forest, native meadow, and old field succession. The plant selection will be native and non-invasive with intent to attract at-risk species, to the extent possible. Field investigations include a wetland delineation, geomorphic assessment, topographic survey, and Phase I Archaeology survey. A detailed hydrologic and hydraulic model will also be developed to ensure stream restoration efforts do not increase flood elevations offsite and to support the rigorous NJDEP flood hazard area regulatory approval. Construction activities include invasive species and debris management, channel and bank stabilization, soil roto-tilling and seeding, vegetation and deer exclusion cage installation, and sign installation. The Project Team has pledged to volunteer work days and monthly invasive species monitoring as part of its routine open-space maintenance routine.

##### *Outputs:*

- 1. Assessment findings to include wetland delineation, geomorphic assessment, topographic survey, and Phase I Archaeology survey*
- 2. Detailed hydrologic and hydraulic model*
- 3. 60% design plans*
- 4. 100% engineering plans and engineering report*

##### *Outcomes:*

- 1. Restore instream habitat and streambanks in degraded areas*
- 2. Restore riparian and floodplain function*
- 3. Reduce nutrient inputs into the river and tributaries*
- 4. Improve habitat resilience*
- 5. Invasive species management and promote native communities*

#### **2. Engage Community through Design, Education, and Volunteer Opportunities, (DWCF Strategic Program Area #1, Cross-Program Activities #1, #2, and #4)**

##### *Methods:*

The current project concept is based on the input of over 450 community members through outreach conducted in 2021 around the future of the property. This project will build on that community engagement by facilitating an in-person design charrette to gather input on the onsite access and recreational opportunities.

##### *Outputs:*

- 1. Meeting notes and attendance reflecting diverse community engagement*
- 2. Community-informed final design*
- 3. Design renderings and illustrations based on community feedback, that will be presented during a sitewalk.*
- 4. Three permanent educational signs to be installed along the walking trails.*
- 5. Creation of interpretive brochures for the site*

*Outcomes:*

- 1. Increased awareness of project and ecological significance.*
- 2. Community volunteer opportunities both during and post-construction*

**3. Enhance Public Access and Passive Recreation, (DWCF Strategic Program Area #4, Cross-Program Activities #1)**

*Methods:*

*The final design of the recreation and public access opportunities will be informed by the community design charrette and other input collected through project outreach efforts. The current concept includes 1500 linear feet of new mowed trails throughout the site. There will be no fees or limitations to accessing the site and public parking is available on the street adjacent to the project location. Once the construction is completed, Lambertville Go Wild and the Parks and Recreation Commission will host community events, such as an annual butterfly count, to increase awareness of the site as a recreational amenity.*

*Outputs:*

- 1. Linear feet of new trails. The current concept includes 1,500 linear feet, but the final design will be based on community input.*
- 2. Number of new on-site events based on community input. Potential events include guided walks and an annual butterfly count*

*Outcomes:*

- 1. Increased access to nature-based recreation for residents and the larger regional community*
- 2. Provide year-round recreation opportunities onsite*
- 3. An expanded network walking trails by connecting Closson Site to other local paths.*

**D. Partner Justification:**

This project brings together experts in grant management and project oversight, community engagement and education, restoration design and construction, water resources management, and ecological restoration. The City of Lambertville, the Lambertville Environmental Commission, the Lambertville Parks and Recreation Committee, and Lambertville Goes Wild have partnered on this small, but impactful, project. The City of Lambertville is contracting Princeton Hydro, LLC and Envirosapes for technical expertise and professional services. These organizations form the core Project Team that will advance the restoration planning, design, and construction, with support from additional partners. In addition, to date, the City has received letters of support from several regional partners with an interest in this project.

- |  |   |
|--|---|
| 1. Lambertville Parks & Recreation Commission  | 8. The Nature Conservancy                         |
| 2. Lambertville Environmental Commission       | 9. FoHVOS New Jersey Strike Team                  |
| 3. Lambertville Goes Wild                      | 10. Green Acres Program, NJDEP                    |
| 4. Princeton Hydro                             | 11. Township of West Amwell                       |
| 5. Delaware River Basin Commission             | 12. New Jersey Conservation Program (coming soon) |
| 6. Fisherman's Mark                            | 13. The Watershed Institute (coming soon)         |
| 7. Lambertville Office of Emergency Management |   |

**The City of Lambertville** is the property owner of the project site and the ideal leader for this effort. The City has a staff of 47 employees and 5 council members, including the Mayor. Despite the small size, the City has strong experience with managing grants and complex projects through assistance and support of committed staff and community volunteers. The City will lead grant management and project management for this restoration effort.

**Lambertville Parks and Recreation Committee**

The Parks and Recreation Commission oversees operations and maintenance of city parks, while also offering recreational events and activities for the community at large. The Parks and Recreation Commission tends the City's five parks and

natural open space, by honoring shared values of sustainability, natural habitat encouragement, low fossil fuel footprint and community stewardship and enjoyment of the outdoors. The Commission will provide project leadership and document review, lead the outreach and education tasks with Lambertville Goes Wild, and create the post-site maintenance manual.

**Lambertville Environmental Commission** is composed of volunteers dedicated to advocate for the protection, development and/or use of natural resources within the City. Lambertville continues to lead the way on protecting the environment, setting an example for other cities and towns through effective ways to forge a green future. The Environmental Commission is integral to these efforts, providing innovative, cutting-edge recommendations to the Mayor and Council and educating the public about the environmental challenges facing the City. The Commission will support the project through project leadership and document review, outreach, and volunteering time for stewardship and construction/maintenance.

For this project, the **City of Lambertville** has partnered with the following experts in ecological restoration:

- ❖ **Lambertville Goes Wild** is a small local organization with a mission to make Lambertville a more welcoming place for birds, butterflies, and even people. Through education and direct technical assistance, Lambertville Goes Wild works with homeowners to help reduce stormwater runoff, protect the soil from erosion, and keep pollution out of rivers, streams, reservoirs and wells through invasive species management, landscape design, and native plantings. They will lead the outreach and education tasks, as well as the post-construction maintenance and monitoring.
- ❖ **Princeton Hydro** is a water resources engineering and natural resource management consulting firm. Princeton Hydro has over 20 years of experience working in the field of ecosystem restoration in NJ and the surrounding states, with specific experience in wetland restoration, living shorelines, stormwater management, aquatic ecology, and habitat enhancement. Their team of wildlife biologists, ecologists, regulatory specialists, and water resource engineers have been working with the City of Lambertville for 15 years on flooding, stormwater, water quality, and ecological projects. Princeton Hydro has worked on multiple NFWF grants and are familiar with all reporting requirements. They will lead the modeling and data collection, restoration design, and permitting tasks.
- ❖ **Enviroscapes Inc** provides specialized expertise in streambank restoration services, permanent and temporary seeding, site clearing, installation of soil erosion control measures, and specialty construction services including ecological restoration involving living shorelines and utility line rights-of-ways. Incorporated in March of 1991, Enviroscapes has successfully completed over 1,500 environmental & ecological restoration projects in its 29-year history. Enviroscapes has a solid history supporting both public and private sector clients including public utilities, local, county, state, and federal government agencies, environmental consultants, general construction, and environmental contractors with restoration services. In addition, the firm has an exemplary safety record and a proven track record of performing work on time and within budget. They will lead the construction phase.

**Key Project Team Members:**

Cindy Ege, CMR, RMC City Clerk City of Lambertville	Ms. Ege has been City Clerk for over 10 years. Prior to joining the City staff, she served for 12 years as a Councilmember. Her unparalleled understanding of the community and the region makes her uniquely qualified to lead this restoration effort.
Mary Anne Borge, Chairperson Parks and Recreation Commission	Ms. Borge is a naturalist, photographer, writer, and educator. She is a certified Pennsylvania Master Naturalist, a contributor to Butterfly Gardener magazine, and an instructor at Bowman’s Hill Wildflower Preserve. She is also active in Lambertville Goes Wild. Her role in this project will be education, outreach, planting design, and site monitoring and maintenance.
Liz Magill Peer, Chairperson Environmental Commission	Ms. Peer is a local artist with a passion for the environment, and specifically for addressing the many issues contributing to the current climate crisis. Her role will be input on documents and design, and working with the community to organize volunteers during and after the project.
Lauren Kovacs, LLA Landscape Architect Lambertville Goes Wild	Ms. Kovacs, LLA, a landscape architect with over ten years of experience in sustainable landscape design. She is a founding member of Lambertville Goes Wild. Her role in this project will be education, outreach, planting design, and site monitoring and maintenance.
Christiana Pollack, GISP, CFM, CERP Director of Restoration and	As a Director of Restoration and Resiliency, Ms. Pollack oversees numerous ecological restoration design, wetland restoration, and geospatial projects that provide ecosystem services to mitigate flood risks, improve water quality, and strengthen storm resiliency. Ms. Pollack

Resiliency Princeton Hydro, LLC	brings 19 years of professional experience as a Certified Floodplain Manager, Ecologist, and GIS Professional at Princeton Hydro. She has an extensive background in project management, NFWF grants, watershed management, ecosystem restoration, and nature and nature-based feature designs used to reduce flood risk while maximizing ecological benefits.
Paul Woodworth, CERP Geomorphologist	Mr. Woodworth is a Senior Project Manager and Fluvial Geomorphologist who applies his expertise to a range of projects involving dam removal and the assessment, management, and restoration of streams, rivers, floodplains, and wetlands. Mr. Woodworth has been involved with over 50 barrier removals. He has completed detailed studies that demonstrate dam removal feasibility and identify project constraints and special considerations for engineering designs Mr. Woodworth has also worked on projects involving fish passage accommodations at dams and has supported design of fish by-pass channels, fish-passable rock ramps, and fish ladders.

**E. Diversity, Equity, Inclusion and Justice:**

**Community Characteristics**

The City of Lambertville is a small historic community of approximately 3,900 residents. Approximately 22 percent of the residents are over the age of 65. The community is largely proficient in English, with only 4 percent of the population having low-English fluency. According to the American Community Survey 6.8 percent of residents fall below the poverty line within the City. Fisherman’s Mark, a local community-based organization that provides social services to underserved members of the community, noted that it served 500 clients in crisis during 2021. One of the major efforts Fisherman’s Mark organized was providing recovery funds to households within the City in response to Hurricane Ida. Many of these individuals live, or lived, downstream of the project site in a low-income housing complex heavily damaged during Hurricane Ida. This complex is only one of three affordable housing rental complexes within City limits, so efforts to reduce its vulnerability are a high priority for the City.

**Planned Outreach and Community Engagement Activities**

This project includes several opportunities to engage members of the public. The City works closely with Fisherman’s Mark to reach socially-vulnerable community members that may be underrepresented. During the design phase, the City will host a design charrette for the community. Once the design is optimized, the Parks and Recreation Commission and Lambertville Go Wild will provide an onsite walking tour to present the design vision. Design renderings and illustrations and descriptions of project benefits, such as stormwater management, will be developed and presented in brochures and/or presentation boards to communicate the future condition of the site. The City will work with Fisherman’s Mark and the Department of Community Affairs to see if translation services can be provided for some or all of this programming. The City will work with Fisherman’s Mark and other organizations within the community to ensure participation is representative of the populations that will benefit from the project. To track participation, the Project Team will track number of attendees, number of volun

**F. Work Plan:**

**Statement of overall project methodology or approach:**

The restoration project includes 8 tasks using the proposed funds under this grant opportunity, and two additional post-grant activities. The project will kick-off and begin initial outreach to build on the community engagement efforts conducted in 2021 post-acquisition and the interest from the organizations that sent in letters of support for the project. During the first six months, Princeton Hydro will conduct the necessary data collection and analysis to support the design and regulatory approvals. Before the design moves to construction there will be a public design charrette to gather input. Engineering and permitting will occur after there is consensus on the concept. During these periods, there will be opportunity to engage the community by preparing volunteer days for planting and debris clean-up. Construction is expected to take about 3-4 weeks, with a completion date of late-spring 2024. Post construction outreach activities and site stewardship and monitoring will be ongoing after the completion of the grant period. Project partners are committed to active use and maintenance of the site.

Activity	Lead	Timeline	Expected Result of Activity (outputs)
<b><i>Project Kickoff and Outreach</i></b>	City of Lambertville and Parks & Recreation Commission	Months 1 to 2	<ul style="list-style-type: none"> <li>• A project partner kickoff meeting will be held to discuss the project goals and objectives, design and construction schedule, and organize the public design charrette.</li> <li>• The design charrette will be held in person to obtain input from the public for access and recreational opportunities.</li> <li>• With input from the project partners and the public, the concept will be optimized before advancing to the engineering phase.</li> </ul>
<b><i>Field Activities and Hydrologic &amp; Hydraulic Modeling</i></b>	Princeton Hydro	Months 2 to 6	<ul style="list-style-type: none"> <li>• The goal of this task is to collect the data and information required to support the design and regulatory approvals. Field investigations include a wetland delineation, geomorphic assessment, topographic survey, and Phase I Archaeology survey. A detailed hydrologic and hydraulic model will also be developed to ensure stream restoration efforts do not increase flood elevations offsite and to support the rigorous NJDEP flood hazard area regulatory approval.</li> </ul>
<b><i>60% Design Phase</i></b>	Princeton Hydro	Months 4 to 8	<ul style="list-style-type: none"> <li>• The optimized concept will be advanced to the 60% design phase. The results of the field investigations and hydrologic and hydraulic modeling will inform the engineering design that will ultimately maximize ecological uplift when constructed. A preliminary construction cost estimate will also be developed during this phase.</li> <li>• The 60% design plans will be presented to the project partners during a project partner review meeting.</li> </ul>
<b><i>100% Design Phase</i></b>	Princeton Hydro	Months 9 to 11	<ul style="list-style-type: none"> <li>• The 60% engineering design will be advanced to 100%. As part of this task, a value engineering exercise will be completed using the 60% preliminary construction cost estimate as the basis. This exercise will ensure the construction cost is within the allocated budget.</li> <li>• In addition to developing a final construction cost, an engineering report will be drafted to support regulatory approvals.</li> <li>• The Parks and Recreation Commission will create a site maintenance manual detailing post-construction maintenance requirements. This will include establishing ‘no-mow’ zones, providing instructions to maintain the wildflower meadow, and monitoring and removal of invasive plant species.</li> </ul>
<b><i>Outreach and Education</i></b>	Lambertville Goes Wild and Parks & Recreation Commission	Months 1 to 16	<ul style="list-style-type: none"> <li>• During the design phase, public outreach will include an onsite walking tour to present the design vision. Design renderings and illustrations and descriptions of project benefits, such as stormwater management, will be developed and presented in brochures and/or presentation boards to communicate the future condition of the site.</li> <li>• Three educational signs will be curated and permanently installed onsite. The signs will educate readers about the project elements, describe the ecological value and flood management benefits being restored and its relationship to the Delaware River, discuss the importance of resiliency in light of climate change impacts, and offer restoration tips and suggestions that can be completed at home.</li> </ul>

<b>Permitting</b>	Princeton Hydro	Months 10 to 14	<ul style="list-style-type: none"> <li>Regulatory approvals will be obtained from the appropriate Federal, State, and Local agencies including New Jersey Department of Environmental Protection (NJDEP) and Hunterdon County Soil Conservation District. It's anticipated that both NJDEP Freshwater Wetland and Flood Hazard Area permits will be required due to the nature of the proposed restoration in the channel and riparian area. Soil erosion and sediment control approval will also be acquired.</li> </ul>
<b>Construction</b>	Envirosapes	Month 15	<ul style="list-style-type: none"> <li>The expected construction duration is three to four weeks. Construction activities include invasive species and debris management, channel and bank stabilization, soil roto-tilling and seeding, vegetation and deer exclusion cage installation, and sign installation. These activities will assist to restore floodplain function, enhance the riparian area, stabilize the unstable stream, and manage stormwater runoff.</li> </ul>
<b>Grant Administration</b>	City of Lambertville	Months 1 to 16	<ul style="list-style-type: none"> <li>Grant administration activities include project management, quarterly reporting, and monthly invoicing.</li> <li>Under this task, a final report will be developed to document the project process, photo document pre- and post-construction conditions, and update metrics.</li> </ul>
<b>Outreach Activities Post-Construction</b>	Lambertville Goes Wild; Parks and Recreation Commission, and Environmental Commission	Month 16+	<ul style="list-style-type: none"> <li>Outreach activities related to the project will extend beyond the design and construction duration. Seasonally, the project partners will offer guided walks that focus on the restoration project benefits including stormwater management and habitat for birds, bees, butterflies, and other wildlife.</li> <li>Interpretive brochures available on the City's website will be developed and updated as the forest and meadow plant communities evolve and mature overtime, highlighting the site's wildlife and plant offerings.</li> <li>Additional activities to engage the public include scavenger hunts and hosting an annual butterfly count.</li> </ul>
<b>Site Stewardship &amp; Monitoring</b>	Lambertville Goes Wild; Parks and Recreation Commission, and Environmental Commission	Month 16+	<ul style="list-style-type: none"> <li>The project partners are committed to the success of this project and understand the importance of adaptive management. As such, project partners will complete monthly walkthrough inspections to monitor invasive species and plant growth. Monthly 'work days' will be scheduled to manage invasive species and install vegetation, if necessary. Effort associated with the works includes recruiting, organizing, training, and supervising volunteers.</li> </ul>

### G. Monitoring and Measuring Performance:

The three main objectives will be tracked with several performance metrics throughout the grant. The creation of ecological uplift with increased resilience will be tracked through acres of floodplain restored, number of trees planted, and the volume of sediment, phosphorus, and stormwater retained on site. The evaluation of the extent to which the project has engaged the community through design, education, and volunteer opportunities will be conducted by recording the number of residents attending the design charrette and site walk. The public will gain increased public access and passive recreation to the site, which will be measured by length of trails created on site.

The Project Team has built in some contingencies for delays due to permitting, weather, and scheduling into the project timeline. In terms of budget, the Project Team continues to seek volunteer and in-kind services that will help offset potential cost-overruns.

In addition to overseeing the project during the grant, the City of Lambertville is committed to the long-term viability of this restoration effort. Both city staff and community volunteers will monitor the stream stabilization feature and the planted area, to ensure the design remains intact. The Parks and Recreation Commission will create a manual with procedures for volunteers to effectively monitor the sites. Any issues will be addressed to ensure continued effectiveness. As such, project partners will complete monthly walkthrough inspections to monitor invasive species and plant growth. Monthly 'work days' will be scheduled to manage invasive species and install vegetation, if necessary.

#### **H. Dissemination and Transferability of Results:**

The broader goal of the project to address increased storm intensity through ecological uplift and riparian restoration is applicable across the watershed, where many communities lack large open spaces downtown to address stormwater and water quality through natural features. Additionally, the objectives to engage the community and restore public access to a newly acquired site will provide lessons learned for any community seeking a similar endeavor.

The Project Team intends to share the results of the project in three ways. First, by creating opportunities to engage key regional organizations that work within the Delaware River Watershed, such as the Watershed Institute and the Delaware River Basin Commission, whose knowledge of the project will help disseminate the results through the region. The second method will be the onsite educational signage that allows visitors an understanding of the value and significance of the project. The third method is presenting at regional conferences for organizations such as the annual Watershed Forum hosted by the Coalition for the Delaware River Watershed. Additionally, organizations such as the Watershed Institute and New Jersey American Water Resources Association, have periodic opportunities to present at symposiums and other opportunities to share the project with the broader restoration community and relevant professional disciplines.



File: C:\Users\cpollack\Desktop\NFWF\_South\_River\_Restoration\_Plan\_Closson\_Site.mxd, 3/18/2022, Drawn by cpollack, Copyright Princeton Hydro, LLC.

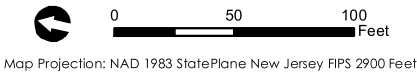
Stabilize widening/  
downcutting channel  
and eroding banks

Create subtle ground  
depressions to retain  
and infiltrate stormwater

**Legend**

-  Restoration Area (4.6 ac)
- Restoration Concept Features**
-  Old Field Succession (1.5 ac)
-  Riparian Area (2.0 ac)
-  Wildflower Meadow (1.1 ac)
-  Stream Stabilization (700 LF)
-  Mowed Walking Trail (1,200 LF)
-  Educational Sign

NOTES:  
1. Restoration concept features are approximate.  
2. 2020 orthoimagery obtained from NJ Office of Information Technology (NJOT), Office of Geographic Information Systems (OGIS).

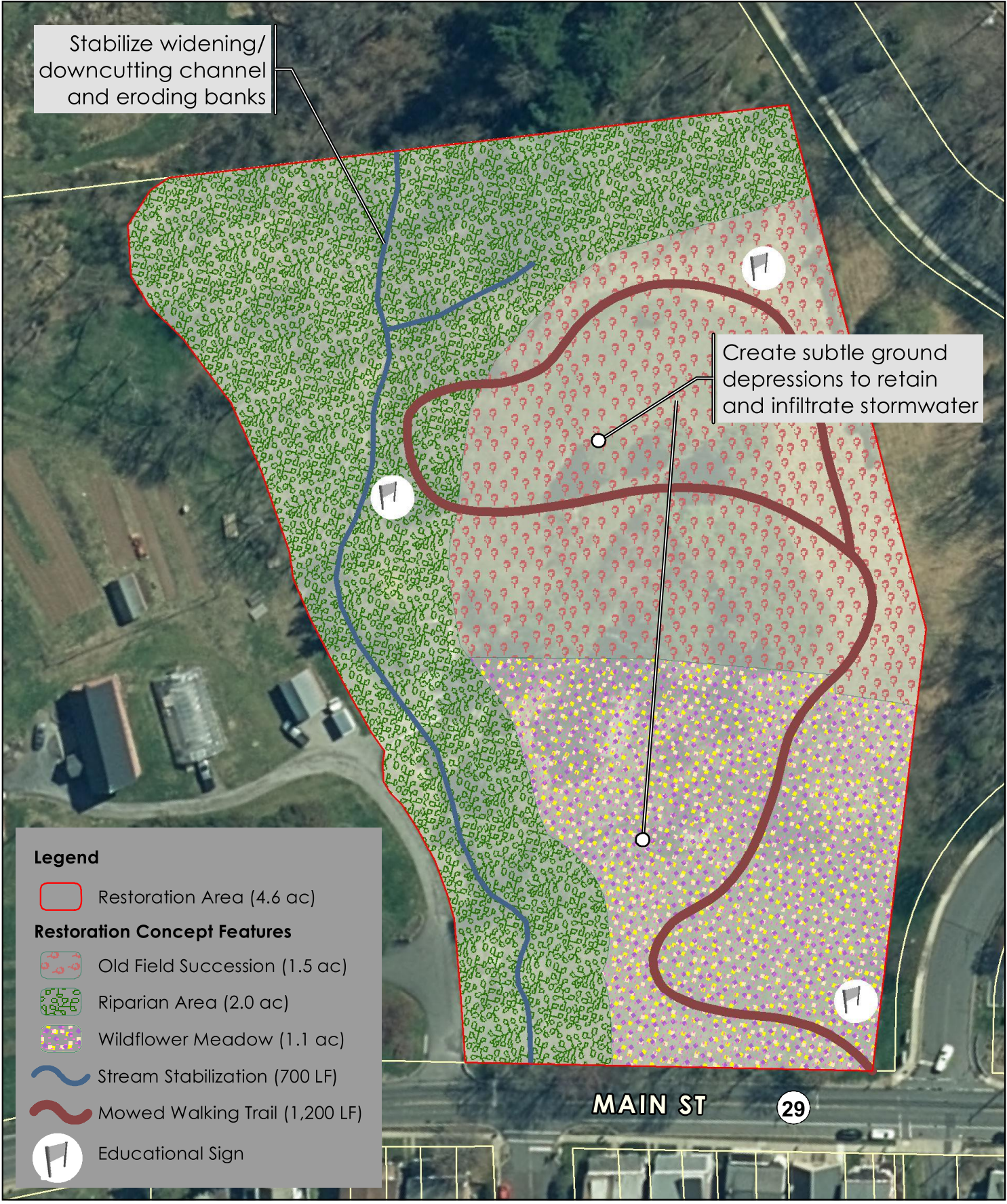


# RESTORATION CONCEPT

CLOSSON SITE  
NATIONAL FISH AND WILDLIFE FOUNDATION  
DELAWARE WATERSHED CONSERVATION FUND  
CITY OF LAMBERTVILLE  
HUNTERDON COUNTY  
NEW JERSEY



**PRINCETON HYDRO**  
SCIENCE DESIGN ENGINEERING  
[www.PrincetonHydro.com](http://www.PrincetonHydro.com)





City of Lambertville is proud to partner with a variety of nonprofit organizations and consultants on this project.

**Project Partners & In-kind Contributors**

- Parks and Recreation Commission, City of Lambertville
- Environmental Commission, City of Lambertville
- Lambertville Goes Wild
- Princeton Hydro

**Project Supporters**

- Delaware River Basin Commission
- Fisherman's Mark
- Office of Emergency Management, City of Lambertville
- The Nature Conservancy
- FoHVOS New Jersey Invasive Species Strike Team
- Green Acres Program, New Jersey Department of Environmental Protection
- West Amwell Township
- New Jersey Conservation Program (coming soon)
- The Watershed Institute (coming soon)



## City of Lambertville

18 York Street  
Lambertville, NJ 08530  
609-397-0110  
www.lambertvillenj.org

Andrew J. Nowick  
*Mayor*

Julia Taylor  
*Council President*

Benedetta Lambert  
*Councilwoman*

Wardell Sanders  
*Councilman*

Steve Stegman  
*Councilman*

National Fish and Wildlife Foundation  
1133 Fifteenth St. N.W., Suite 1000  
Washington, DC 20005  
T 202-857-0166 | F 202-857-0162

March 30, 2022

RE: 2022 Delaware Watershed Conservation Fund — Closson Site Restoration

Dear NFWF Selection Committee,

In May of 2021, the City of Lambertville acquired the Closson Farm, which had been in the same family since John Holcombe purchased it as part of a six-hundred-acre tract in 1705. For over three centuries, Holcombe's direct descendants lived at the farm: there is the Holcombe house, aka Washington's Headquarters, built about 1724, several barns of the same era, a more recent log cabin home, and a farm market. All this set on 8.49 acres of rolling hills with a creek running west to the Delaware River. Cow Hill, just below the Holcombe house, has been *the* sledding destination for generations of local children.

The City purchased the property not only to preserve the exceptionally fine historic buildings, but also to protect the viewshed and to create an open space resource for the community. Before I was elected mayor, I served on the Lambertville Community Advisory Team (CAT) which sought public input for uses of the Closson Site. The CAT spent months gathering feedback, and what you see in our application reflects what the community wanted: a gathering space with walking paths, wildflower meadows, and various educational components. The CAT also noted a "strong emphasis on using the site for flood/climate change mitigation."


Since those findings, Hurricane Ida wrought incredible damage to our City. What was a narrow burbling creek on the Closson Farm was badly marred. Debris crashed down the hills in torrents of water, severely eroding the creek and undercutting its banks. Indeed, all our waterways suffered. Two creeks (Swan and Ely) will undergo a 1.8-million-dollar stabilization project this summer, funded in large part by a USDA/NRCS grant. A third creek, the C-1 designated Alexauken was also seriously damaged, and we have yet to identify a funding source for its stabilization.

National Fish and Wildlife Foundation  
1133 Fifteenth St. N.W., Suite 1000  
Washington, DC 20005  
T 202-857-0166 | F 202-857-0162  
Page 2

While we are hard at work stabilizing our creeks and repairing our infrastructure, we have simultaneously begun to expand our mitigation and resiliency efforts. The restoration of the Closson site will be a key element in our plan. This project will provide an excellent opportunity to educate residents about natural methods to mitigate stormwater runoff while offering a wonderful and historic setting in which to enjoy our natural resources and our community.

I couldn't be more excited about the prospect of this grant. Working with our partners at Princeton Hydro, Envirosapes, and Lambertville Goes Wild, we will create a place of natural beauty and sustainability that will be cherished by generations of Lambertvillians. With much gratitude to the NFWF Selection Committee for your consideration of our application, I remain,

Sincerely yours,



Andrew J. Nowick

Mayor, Lambertville



**City of Lambertville**

18 York Street  
Lambertville, NJ 08530  
609-397-0110  
www.lambertvillenj.org

Andrew J. Nowick  
*Mayor*

Julia Taylor  
*Council President*

Benedetta Lambert  
*Councilwoman*

Wardell Sanders  
*Councilman*

Steve Stegman  
*Councilman*

March 31, 2022

To Whom It May Concern:

The City of Lambertville will provide the match to the NFWF Delaware River Program Delaware Watershed Conservation Fund Grant through an application to the County of Hunterdon's Open Space to use our banked funds. Additionally, we intend to apply for a \$25,000 New Jersey Corporate Wetlands Restoration Partnership grant. We also plan to use in-kind contributions totaling \$19,900 of city staff time.

I can be reached at 609-397-0110, ext. 11 should you have any questions or require additional information.

Sincerely,

Cynthia L. Ege  
CMR, RMC, City Clerk

Lambertville Parks & Recreation Commission  
18 York Street  
Lambertville, NJ 08530

National Fish and Wildlife Foundation  
1133 Fifteenth St. N.W., Suite 1000  
Washington, DC 20005  
T 202-857-0166 | F 202-857-0162

March 31, 2022

RE: 2022 Delaware Watershed Conservation Fund — Closson Site Restoration

Dear NFWF Selection Committee,

Please accept this letter of support for the “Closson Site Restoration in the Delaware River Basin” project. The Lambertville Parks & Recreation Commission fully supports this project as an opportunity to create connected public trails on the City’s largest remaining undeveloped parcel, stabilize a perennial stream, and build ecological resilience within a subwatershed of the Delaware River.

The Parks & Recreation Commission oversees operations and maintenance of our parks, while also offering recreational events and activities for our community at large. We are entrusted by our community to tend our natural open space, and we do so by honoring shared values of sustainability, natural habitat encouragement, low fossil fuel footprint and community stewardship and enjoyment of the outdoors.

We understand the benefits to our residents of having ready access to nature. This nature-based project will provide new hiking trails right in the City where residents can learn about the value of native plants to the birds, butterflies, bees and other wildlife that share our environment. Residents will also be able to see the benefits that accrue to humans, especially as this project helps to mitigate the possibility and severity of flooding from the hillside. The Parks and Recreation Commission is excited to be able to offer this nature-based recreational and educational opportunity for our residents.

The Lambertville Parks & Recreation Commission is committed to contribute the following services to this effort totaling \$95,500 of in-kind match:

- manage public meetings to solicit input from the community on the project
- lead guided walks on the site
- provide tree and shrub saplings (via Sourland Conservancy)
- help plant new trees and shrubs
- help remove invasive species
- recruit, train and supervise volunteers to help with invasive species removal and planting new trees and shrubs.

Lambertville Parks & Recreation Commission  
18 York Street  
Lambertville, NJ 08530

- manage the City of Lambertville resources that are essential to the project
- manage the ongoing maintenance for the property

On behalf of the Lambertville Parks & Recreation Commission, we look forward to working with project partners and the community to restore the Closson Site.

Sincerely,

*Mary Anne Borge*

Mary Anne Borge

Chair, Lambertville Parks & Recreation Commission

## Lambertville Environmental Commission

National Fish and Wildlife Foundation  
1133 Fifteenth St. N.W., Suite 1000  
Washington, DC 20005  
T 202-857-0166 | F 202-857-0162

March 30, 2022

RE: 2022 Delaware Watershed Conservation Fund — Closson Site Restoration

Dear NFWF Selection Committee,

Please accept this letter of support for the “Closson Site Restoration in the Delaware River Basin” project. The City of Lambertville fully supports this project as an opportunity to create connected public trails on the City’s largest remaining undeveloped parcel, stabilize a perennial stream, and build ecological resilience within a subwatershed of the Delaware River.

Lambertville continues to lead the way on protecting the environment, setting an example for other cities and towns through effective ways to forge a green future. The Environmental Commission is integral to these efforts, providing innovative, cutting-edge recommendations to the Mayor and Council and educating the public about the environmental challenges facing the City. The Environmental Commission is committed to supporting the City with community outreach and volunteer efforts to ensure the successful implementation of this grant; as such we are providing \$40,000 of in-kind services.

On behalf of the City of Lambertville, we look forward to working with project partners and the community to restore the Closson Site.

Sincerely,

Elizabeth Peer

Chair, Lambertville Environmental Commission



National Fish and Wildlife Foundation  
1133 Fifteenth St. N.W., Suite 1000  
Washington, DC 20005  
T 202-857-0166 | F 202-857-0162

March 31, 2022

RE: 2022 Delaware Watershed Conservation Fund — Closson Site Restoration

Dear NFWF Selection Committee,

Please accept this letter of support for the “Closson Site Restoration in the Delaware River Basin” project. Lambertville Goes Wild fully supports this project as an opportunity to create connected public trails on the City’s largest remaining undeveloped parcel, stabilize a perennial stream, and build ecological resilience within a subwatershed of the Delaware River.

Lambertville Goes Wild is a volunteer organization whose mission is to provide education about the importance of native plants to all life, and about other sustainable gardening practices. In 2019 we successfully led the City of Lambertville to certification by the National Wildlife Federation as a Community Wildlife Habitat.

This nature-based project will have a beneficial effect on wildlife habitat, provide new hiking trails in the City where residents can learn about the value of native plants, and will also help minimize the possibility and effects of flash flooding from the hillside. Flash flooding from this creek contributed to devastating flooding in the City last September. With the increase in extreme weather resulting from climate change, this type of event will become more frequent. We need to do everything we can to make the City more resilient.

Lambertville Goes Wild is committed to contribute the following services to this effort totaling \$98,100 of in-kind match:

- landscape design
- design interpretive signs
- develop interpretive brochures and scavenger hunts
- lead guided walks on the site
- help plant new trees and shrubs





- help remove invasive species
- recruit, train and supervise volunteers to help with invasive species removal and planting new trees and shrubs.

On behalf of the Lambertville Goes Wild, we look forward to working with project partners and the community to restore the Closson Site.

Sincerely,

*Mary Anne Borge*

Mary Anne Borge

Team Leader, Lambertville Goes Wild

March 31, 2022

Dear NFWF Selection Committee,

On behalf of Princeton Hydro, we are writing in support of City of Lambertville's grant application to the National Fish and Wildlife Foundation's 2022 Delaware River Program Delaware Watershed Conservation Fund for the "Closson Site Restoration in the Delaware River Basin" project. Princeton Hydro is a water resources engineering and natural resource management firm committed to improving our ecosystems, quality of life, and communities.

Princeton Hydro has partnered with the City of Lambertville to enhance the recently acquired Closson Farm property in the Ely Creek Watershed within the Lower Central Sub-watershed of the Delaware River Basin. The project area is a 4.6-acre undeveloped parcel and presents the rare opportunity in a densely developed town to mitigate flooding; decrease stormwater runoff volume; and decrease phosphorus and sediment pollutant loading while also providing public access and passive recreation. The objectives of the project include the creation of ecological uplift through early succession forest and native meadow; establishing microtopography to attenuate stormwater; stabilization and restoration of a degraded stream; engagement and education of the community; and enhancement of public access and passive recreation. These objectives were identified as key priorities by the community during pre- and post- acquisition outreach.

The broader goal of the project is applicable across the watershed where many communities lack large open spaces to address flood mitigation, stormwater volume, and water quality through natural features. The objectives to engage the community and restore public access to a newly acquired site will provide lessons learned for any community seeking a similar endeavor.

For this grant project, the City of Lambertville has partnered with Princeton Hydro and our subcontractor Envirosapes to design and construct the restoration of a riparian area and floodplain, as well as the stabilization of a tributary of the Delaware River. The total fee for Princeton Hydro and Envirosapes to manage the project, conduct field activities and modeling, produce the engineering plans, acquire necessary permits, construct the design, conduct outreach, and support the City in administering the grant is \$308,340.

**Our firm is committed to giving back to our local community and supporting the City of Lambertville and project partners. Because of this, our consultant rates and associated fees provided above have been discounted for this project. The difference between our actual cost and discounted costs equates to an in-kind donation of \$33,300.**

If you have any questions or would like more information, I can be reached at [ggoll@princetonhydro.com](mailto:ggoll@princetonhydro.com) or 609-915-9425.

Sincerely,



Geoffrey Goll, PE  
President  
Princeton Hydro, LLC



**Delaware River Basin Commission**

25 Cosey Road  
PO Box 7360  
West Trenton, New Jersey  
08628-0360  
Phone: (609) 883-9500 Fax: (609) 883-9522  
Web Site: <http://www.drbc.gov>

**Steven J. Tambini, P.E.**  
Executive Director

---

March 31, 2022

Ms. Rachel Dawson  
Program Director, Delaware River  
National Fish and Wildlife Foundation  
1133 Fifteenth Street NW, Suite 1000  
Washington, DC 20005

Dear Ms. Dawson,

The Delaware River Basin Commission (DRBC) is writing to support the proposal of Lambertville, NJ to the Delaware Watershed Conservation Fund (DWCF), *Closson Site Restoration in the Delaware River Basin* (#75345).

The city is applying to restore riparian area and floodplain and stabilize a tributary to the Delaware River that was impacted by Hurricane Ida. The project site represents one of the last undeveloped sites in one of the country's most iconic river towns, and offers a rare opportunity to mitigate flooding, decrease stormwater runoff volume, decrease nitrogen, phosphorus, and sediment pollutant loading to the tributary and thus improve the water quality of the Delaware River, while providing public access and passive recreation.

If awarded, these grant funds will allow the city to leverage this property to proactively address the stability of a channel vulnerable to high flows from intense rain events while creating ecological enhancement within the watershed.

The project will have environmental, social, and economic benefits for the community including stream bank stabilization, sediment control, runoff flow reduction, and improved public access. The project will enhance 4.5 undeveloped acres following significant storm damage in 2021.

Additionally, the city plans to engage the community as partners in the design-build process, and to create post-construction education through interpretive signage and create year-round public access and connectivity to existing community walking paths.

The DRBC's mission is to manage, protect and improve the water resources of the Delaware River Basin. For many years, DRBC has participated in Lambertville's Shad Fest and understands the vital role river towns like Lambertville play in anchoring economic vitality, enhancing ecological awareness and connecting the public to our shared water resources. The DRBC strongly supports this proposal and recommends you consider this project for funding.

Sincerely,

A handwritten signature in black ink, appearing to read 'Stambini', is written over a large, light-colored oval shape that serves as a background for the signature.

Steven J. Tambini  
Executive Director

National Fish and Wildlife Foundation  
1133 Fifteenth St. N.W., Suite 1000  
Washington, DC 20005  
T 202-857-0166 | F 202-857-0162

March 31, 2022

RE: 2022 Delaware Watershed Conservation Fund — Closson Site Restoration


Dear NFWF Selection Committee,

Please accept this letter of support for the “Closson Site Restoration in the Delaware River Basin” project. The City of Lambertville fully supports this project as an opportunity to create connected public trails on the City’s largest remaining undeveloped parcel, stabilize a perennial stream, and build ecological resilience within a subwatershed of the Delaware River.

Fisherman’s Mark is a 501c3 organization serving all of Hunterdon County and parts of Bucks County. Fisherman’s Mark has been a part of the community for over 42 years, providing not only services that meet basic needs, such as food and affordable childcare, but going beyond crisis to partner with individuals and families to break the cycle of crisis and promote self-sufficiency and wellness. Fisherman’s Mark is committed to assisting this project as a community partner with the City of Lambertville.

On behalf of the City of Lambertville, we look forward to working with project partners and the community to restore the Closson Site.

Sincerely,



Jennifer Williford  
Executive Director  
Fisherman’s Mark



## City of Lambertville

18 York Street  
Lambertville, NJ 08530  
609-397-0110  
www.lambertvillenj.org

Andrew J. Nowick  
*Mayor*

Julia Taylor  
*Council President*

Benedetta Lambert  
*Councilwoman*

Wardell Sanders  
*Councilman*

Steve Stegman  
*Councilman*

National Fish and Wildlife Foundation  
1133 Fifteenth St. N.W., Suite 1000  
Washington, DC 20005  
T 202-857-0166 | F 202-857-0162

**March 29, 2022**

RE: 2022 Delaware Watershed Conservation Fund — Closson Site Restoration

Dear NFWF Selection Committee,

Please accept this letter of support for the “Closson Site Restoration in the Delaware River Basin” project. The City of Lambertville’s Office of Emergency Management fully supports this project as an opportunity to create connected public trails on the City’s largest remaining undeveloped parcel, stabilize a perennial stream, and build ecological resilience within a sub watershed of the Delaware River.

This project will help to mitigate damages from heavy rains; stabilize Ely Creek which was damaged during Hurricane Ida; and help to make Cow Hill and our Park at the Closson Property hardy for years to come.

On behalf of the Office of Emergency Management of the City of Lambertville, we look forward to working with project partners and the community to restore the Closson Site.

Sincerely,

Robert Brown, Lieutenant and Officer in Charge  
Lambertville Police Department, OEM Coordinator  
City of Lambertville



The Nature Conservancy in New Jersey  
Elizabeth D. Kay Environmental Center  
200 Pottersville Road  
Chester, NJ 07930

tel [908] 879-7262  
fax [908] 879-2172  
[nature.org/newjersey](http://nature.org/newjersey)

National Fish and Wildlife Foundation  
1133 Fifteenth St. N.W., Suite 1000  
Washington, DC 20005  
March 28, 2022

RE: 2022 Delaware Watershed Conservation Fund / Closson Site Restoration  
Dear NFWF Selection Committee,

Please accept this letter of support for the “Closson Site Restoration in the Delaware River Basin” project. The Nature Conservancy fully supports this project as an opportunity to create connected public trails on the City’s largest remaining undeveloped parcel, stabilize a perennial stream, and mitigate local flooding within a subwatershed of the Delaware River.

The Nature Conservancy uses science and collaborative approaches to achieve lasting results and is a leader in conservation planning and science, natural areas restoration/management, and community-based conservation. Both around the globe and in New Jersey, we are working to protect and restore rivers, lakes, and watersheds; transform the way river systems are managed and developed; and inspire people to get involved in freshwater conservation.

We support The City of Lambertville’s use of funding from the Delaware Watershed Conservation Fund to restore 4.5 acres of riparian area and floodplain and stabilize a tributary to the Delaware River.

Sincerely,  
Beth Styler Barry  
*Director of River Restoration*  
The Nature Conservancy





# FoHvos New Jersey Invasive Species Strike Team

March 29, 2022

National Fish and Wildlife Foundation  
1133 Fifteenth St. N.W., Suite 1000  
Washington, DC 20005  
T 202-857-0166 | F 202-857-0162

RE: 2022 Delaware Watershed Conservation Fund — Closson Site Restoration

Dear NFWF Selection Committee,

Please accept this letter of support for the “Closson Site Restoration in the Delaware River Basin” project. The New Jersey Invasive Species Strike Team fully supports this project as an opportunity to create connected public trails on the City’s largest remaining undeveloped parcel, stabilize a perennial stream, and build ecological resilience within a subwatershed of the Delaware River.

The Strike Team’s mission to protect New Jersey’s natural lands has remained the same since 2008. We serve the conservation community statewide through our dedicated focus on mitigating threats posed by invasive species. Our partners include federal, state, county and municipal governments, conservation groups, private landowners and the general public including volunteer groups dedicated to protecting private property and local parks. We provide a clearinghouse of invasive species knowledge and tools and actively offer training and outreach that reaches up to 2,000 professionals and laymen every year. The Strike Team and our partners detect and eliminate invasive species by mapping them using our phone app and track efforts with our statewide database. Since inception, we have searched 800,000 acres, documented 20,000 invasive populations, and eliminated 5,000 of them.

We look forward to working with the City of Lambertville and the community to restore the Closson Site.

Sincerely,

Michael Van Clef, Ph. D.  
Strike Team Program Director

## Steering Committee

**Kristen Meistrell**  
*New Jersey Audubon*

**Dr. Emile Devito**  
*New Jersey  
Conservation Foundation*

**Kenneth H. Klipstein, II**  
*New Jersey Water  
Supply Authority*

**Dr. Michael Van Clef**  
*Friends of Hopewell  
Valley Open Space*

**Lisa Wolff**  
*Friends of Hopewell  
Valley Open Space*

## Technical Advisory Committee

**Thom Almendinger**  
*Duke Farms*

**Michele Bakacs**  
*New Jersey Division  
of Fish & Wildlife*

**Kerry Barringer**  
*Flora of North  
America Association*

**Heather Corbett**  
*NJ Bureau of Marine Fisheries*

**Chris Doyle**  
*Limnologist*

**Art Gover**  
*The Pennsylvania  
State University*

**Rachel Mackow**  
*Wild Ridge Plants*

**Christopher Smith**  
*New Jersey Division  
of Fish & Wildlife*

**Robert Somes**  
*New Jersey Division  
of Fish & Wildlife*

**Carole Stanko**  
*New Jersey Division  
of Fish & Wildlife*

**Rosa Yoo**  
*New Jersey Department  
of Agriculture*

## Staff

**Lisa Wolff**  
*Executive Director*

**Dr. Michael Van Clef**  
*Program & Stewardship Director*

**Beth Craighead**  
*Land Steward*

**Brian Kubin**  
*Land Steward*

**Dana Christensen**  
*Land Steward*

**Cory Snyder**  
*Land Steward*

**Leslie Kuchinski**  
*Operations Manager*

**Richele Lieboff**  
*Outreach Manager*

## New Jersey Invasive Species Strike Team

A program of Friends of Hopewell Valley Open Space

P.O. Box 395 | Pennington, New Jersey 08534 | 609.730.1560 | [fohvos.org/invasive-species-strike-team](http://fohvos.org/invasive-species-strike-team)





# State of New Jersey

## DEPARTMENT OF ENVIRONMENTAL PROTECTION

### GREEN ACRES PROGRAM

401 East State Street

P.O. Box 420, Mail Code 401-07B

Trenton, New Jersey 08625-0420

Tel. (609) 984-0500 • Fax (609) 984-0608

[www.nj.gov/dep](http://www.nj.gov/dep)

**PHILIP D. MURPHY**

*Governor*

**SHEILA Y. OLIVER**

*Lt. Governor*

**SHAWN M. LATOURETTE**

*Commissioner*

March 31, 2022

National Fish and Wildlife Foundation  
1133 Fifteenth St, N.W. Suite 1000  
Washington, DC 20005

Re: 2022 Delaware Watershed Conservation Fund – Closson Site Restoration

Dear NFWF Selection Committee

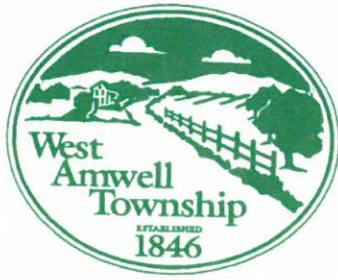
The New Jersey Department of Environmental Protection Green Acres Program enthusiastically supports the City of Lambertville's application to the National Fish and Wildlife Foundation (NFWF) Delaware Watershed Conservation 2022 Grant program. Last year, Green Acres approved funding to the City of Lambertville for the acquisition of the former Closson property, the same property for which the City is pursuing the NFWF's stewardship grant funds.

The NFWF stewardship funding would allow for an important and valuable next step for the City to realize their vision for enhancing the natural resources of the property and allowing public access and educational opportunities to the property. Green Acres supports the City of Lambertville's NFWF application, with the condition that the project meets all applicable State and Federal laws, including the New Jersey Register of Historic Places Act (N.J.S.A. 13:1B-15-128 et seq.)

Feel free to reach out to me if you have any questions

Sincerely,

Martha Sullivan Sapp  
Director



West Amwell Township  
150 Rocktown-Lamb. Road, Lambertville, New Jersey 08530-3203  
(609) 397-2054 (609) 397-8634 FAX  
[www.westamwelltp.org](http://www.westamwelltp.org)

March 23, 2022

National Fish and Wildlife Foundation  
1133 Fifteenth St. N.W., Suite 1000  
Washington, DC 20005  
T 202-857-0166 | F 202-857-0162

Re: 2022 Delaware Watershed Conservation Fund – Closson Site Restoration

Dear NFWF Selection Committee,

Please accept this letter of support for the “Closson Site Restoration in the Delaware River Basin” project. West Amwell Township supports Lambertville City’s endorsement of this project as an opportunity to create connected public trails on Lambertville City’s largest remaining undeveloped parcel, stabilize a perennial stream, and build ecological resilience within a subwatershed of the Delaware River.

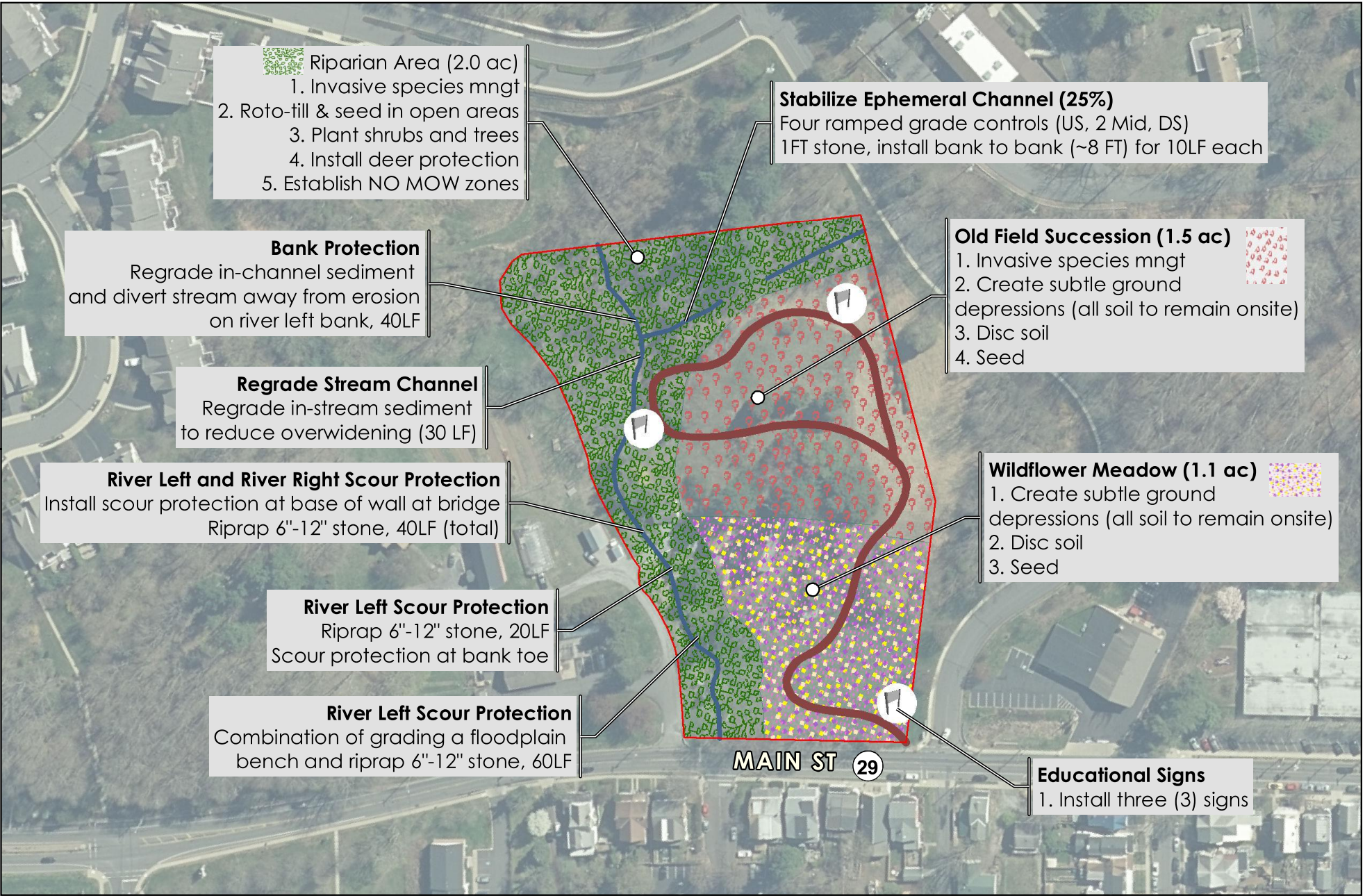
On behalf of the City of Lambertville, we look forward to working with project partners and the community to restore the Closson Site.

Sincerely,

  
Maria Andrews, Township Clerk, RMC



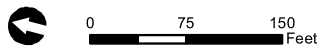
File: P:\0799\Proposals\Closson\_Site\GIS\MXD\Restoration\_Plan\_Classon\_Site\_Construction\_Details.mxd, 3/23/2022, Drawn by cpollack, Copyright Princeton Hydro, LLC



NOTES:  
 1. Restoration concept features are approximate.  
 2. 2020 orthoimagery obtained from NJ Office of Information Technology (NJ OIT), Office of Geographic Information Systems (OGIS).

## RESTORATION - CONSTRUCTION DETAILS

CLOSSON SITE  
 NATIONAL FISH AND WILDLIFE FOUNDATION  
 DELAWARE WATERSHED CONSERVATION FUND  
 CITY OF LAMBERTVILLE  
 HUNTERDON COUNTY  
 NEW JERSEY



Map Projection: NAD 1983 StatePlane New Jersey FIPS 2900 Feet















NFWF

### Statement of Litigation

**Instructions:** Save this document on your computer and complete. The final narrative should not exceed two (2) pages; do not delete the text provided below. Once complete, upload this document into the on-line application as instructed.

**Litigation:** In the space provided below, state any litigation (including bankruptcies) involving your organization and either a federal, state, or local government agency as parties. This includes anticipated litigation, pending litigation, or litigation completed within the past twelve months. Federal, state, and local government applicants are not required to complete this section. If your organization is not involved in any litigation, please state below.

*The City of Lambertville is a local government entity, and is therefore not required to complete this section.*





NFWF

---

**Statement Addressing Board of Directors**

*The City of Lambertville does not have a Board of Directors, Trustees, or Equivalent.*

# APPLICANT CONTROLS AND CAPABILITIES QUESTIONNAIRE



**INSTRUCTIONS:** THIS QUESTIONNAIRE IS REQUIRED WITH THE SUBMISSION OF A NFWF FULL PROPOSAL, FOR THE FOLLOWING ORGANIZATION TYPES: NONPROFIT ORGANIZATIONS, STATE, LOCAL & MUNICIPAL GOVERNMENTS, INDIAN TRIBAL GOVERNMENTS, FOR-PROFIT ENTITIES, AND INCORPORATED INDIVIDUALS. PLEASE COMPLETE AND SIGN THE QUESTIONNAIRE IF YOUR ORGANIZATION DOES NOT HAVE A RECENT (WITHIN TWO YEARS) SINGLE AUDIT UPLOADED TO THE FEDERAL AUDIT CLEARINGHOUSE. DO NOT INCLUDE COPIES OF POLICIES OR PROCEDURES WITH THE SUBMISSION OF THIS FORM.

NFWF UTILIZES THIS QUESTIONNAIRE ALONG WITH A RISK ASSESSMENT TO DETERMINE ELIGIBILITY AND COMPLIANCE REQUIREMENTS, WHICH MAY INCLUDE THE FOLLOWING: ADDITIONAL REPORTING, RESTRICTION OF ADVANCE FUNDING, AND/OR SUBMISSION OF SUPPORTING DOCUMENTATION.

## ORGANIZATION LEGAL NAME

## ORGANIZATION EIN

1. Does your organization have a Single Audit (within the last 2 years) on file with the Federal Audit Clearinghouse? Sent to Chris Battaglia.  
 If yes, sign and upload form.  
 If no, complete form in its entirety.
  
2. Has your organization been suspended or debarred from any government contracting process? If yes, please explain.  
No.
  
3. Has your organization managed a federal award before? If yes, provide a summary of your most recent award, including period of performance, awarding agency, federal program, and size of award.  
Yes, in 2005 the City was awarded and completed a Transportation Enhancement Program grant. In 2017, the city applied for a received a Bicycle and Pedestrian Grant, however, while in the review stages, we found that implementing the traffic calming measures of the grant were not possible due to the city's infrastructure.
  
4. Does your organization maintain written accounting policies and procedures applicable to headquarters and, if applicable, field offices? If no, please explain.  
The City of Lambertville follows the policies and procedures for procurement as outlined by the State of New Jersey. The policies and procedures for procurement are also in the city's administrative code.
  
5. Does your accounting system (or other management system) allow organizational expenses to be tracked: (a) to a specific project on which your organization is working; (b) to specific tasks within that project; and, (c) to specific cost-type categories within each task (e.g., materials, supplies, travel, etc.)? If no, please explain.  
Yes.

## APPLICANT CONTROLS AND CAPABILITIES QUESTIONNAIRE



6. Does your organization have a timekeeping system or documented process that allows staff time to be tracked: (a) to a particular project on which staff spends time; and, (b) to specific tasks within each project? If no, please explain.

Staff will track time using a detailed time sheet.

7. Does your organization maintain employment agreements or other formal evidence of employment between it and its employees? If no, please explain.

We have letters of hire and/or resolutions for all statutory employees.

8. Does your organization maintain basic property and casualty insurance? If no, please explain.

Yes.

9. Is your organization able to perform the project on a cost-reimbursable basis? If no, please explain by providing the following information: (a) current cash on hand amount, (b) advance funding required, and (c) purpose of advance funding.

Yes, we would obtain a bond for the project.

10. Does your organization maintain a written policy on conflict of interest? Would your organization's policy on conflict of interest operate to notify NFWF if your organization finds that it is unable to satisfactorily manage a conflict of interest pertinent to a NFWF-funded project? If no, please explain.

Yes.

11. Does your organization maintain a written procurement policy? If no, please explain.

Yes.

12. If your proposed project includes contracts and/or sub-recipients, has an appropriate legal/contracting officer at your organization reviewed such elements and confirmed that your organization indeed has the ability to implement the arrangements as envisioned?

Yes.

13. Does your organization maintain written policies for property management and do you perform inventory audits/verifications on a regular basis? [APPLICABLE TO PROJECTS WITH EQUIPMENT OR SUPPLIES BUDGETED]

Yes.

14. In the past three (3) years has your organization, or any unit or office thereof, been audited by an external donor/funder or agent thereof? (This would include, but not be limited to, audits of your organization by governmental entities.) If yes, please list all such audits.

Yes.

I certify to the best of my knowledge and belief that the above information is true, complete, and accurate and that I am authorized to submit on behalf of the organization represented above.

**APPLICANT CONTROLS AND CAPABILITIES QUESTIONNAIRE**



**SIGNATURE**

*Andrew J. Nowick*

**NAME AND TITLE**

Andrew J. Nowick, Mayor