



EasyGrantsID: 79496

National Fish and Wildlife Foundation – Delaware Watershed Conservation Fund 2023, Full Proposal

Title: Closson Site Restoration in the Delaware River Basin

Organization: City of Lambertville

Grant Information

Title of Project

Closson Site Restoration in the Delaware River Basin

Total Amount Requested	\$ 322,184.00
Matching Contributions Proposed	\$332,861.42
Proposed Grant Period	01/01/ 2024 - 05/31/ 2025

Project Description

The City of Lambertville is seeking funding from the Delaware Watershed Conservation Fund to manage the effects of increasing storm intensity through riparian restoration and creation of new wildlife habitat on a 4.6-acre undeveloped, City-owned parcel. This site encompasses a branch of Ely Creek that caused damaging flooding during hurricane Ida. Specifically, the proposed project would increase resiliency by managing stormwater; improving water quality in this creek that drains into the Delaware River; improving and creating new wildlife habitat; engaging the community through design, education, and volunteer opportunities; and enhancing public access and passive recreation.

Project Abstract

The City of Lambertville seeks funds from the Delaware Watershed Conservation Fund to enhance the recently acquired Closson Farm property in the Ely Creek Watershed within the Lower Central Sub-watershed of the Delaware River Basin. The three objectives of the project are to 1) Mitigate floodwaters and improve water quality from a degraded stream that drains to the Delaware River, 2) improve wildlife habitat through creation of a riparian forest, early succession habitat, and a meadow, 3) engage and educate the community about the benefits of these actions, and enhance public access to passive nature-based recreation. These objectives were identified as key priorities by the community during post-acquisition outreach. The completed project will result in 4.6 acres of restored floodplain, 300 trees planted, measurable sediment and nutrient reduction, reduced stormwater runoff, community engagement, new walking paths, and the opportunity for volunteer engagement. To accomplish these objectives the City Clerk’s office will lead the project with support from the Environmental Commission and Parks and Recreation Commission. In addition the City is partnering with Lambertville Go Wild on education and outreach, and retaining the services of Princeton Hydro and Enviroscapes.

Organization and Primary Contact Information

Organization	City of Lambertville
Organization Type	State or Local Government
City, State, Country	Lambertville,New Jersey,North America - United States

Region (if international)

Primary Contact	Cynthia Lee Ege
Position/Title	
Phone and E-mail	x ; cityclerk@lambertvillenj.org



NFWF

EasyGrantsID: 79496

National Fish and Wildlife Foundation – Delaware Watershed Conservation Fund 2023, Full
Proposal

Title: Closson Site Restoration in the Delaware River Basin

Organization: City of Lambertville

Additional Contacts

Role	Name



NFWF

EasyGrantsID: 79496

National Fish and Wildlife Foundation – Delaware Watershed Conservation Fund 2023, Full Proposal

Title: Closson Site Restoration in the Delaware River Basin

Organization: City of Lambertville

Project Location Information

Project Location Description	The project site covers 4.6 acres within the Ely Creek watershed within the Lower Central Sub-watershed of the Delaware River Basin in the City of Lambertville, Hunterdon County, NJ. The project site encompasses a perennial tributary to the Delaware River.
Project Country(ies)	North America - United States
Project State(s)	New Jersey
Project Congressional District(s)	District 7 (NJ)

Permits and Approvals

Permits/Approvals Description:	It is anticipated that a Freshwater Wetlands General Permit 16 will be obtained in order to conduct water quality restoration activities within two tributaries to the Delaware River and to create a wetland floodplain bench adjacent to the stream’s main channel. Additionally, it is anticipated that a Freshwater Wetlands General Permit 20 will be obtained to facilitate stream bank stabilization activities including grade controls, scour protection and placement of rip-rap.
Permits/Approvals Status:	Intend to Apply
Permits/Approvals Agency-Contact Person:	NJDEP Division of Land Resource Protection
Permits/Approvals Submittal-Approval Date:	03/01/2025

Permits/Approvals Description:	A Flood Hazard Area Individual Permit will be obtained to conduct bank stabilization and channel restoration activities within two tributaries to the Delaware River. Additionally, as no Department delineation or FEMA flood mapping exists for the site and fill would be placed within the floodway for bank stabilization activities, it is anticipated that a Flood Hazard Area Verification - Method 6 will be obtained to determine the flood hazard area and floodway limits by calculation.
Permits/Approvals Status:	Intend to Apply



NFWF

EasyGrantsID: 79496

National Fish and Wildlife Foundation – Delaware Watershed Conservation Fund 2023, Full Proposal

Title: Closson Site Restoration in the Delaware River Basin

Organization: City of Lambertville

Permits/Approvals Agency-Contact Person: NJDEP Division of Land Resource Protection

Permits/Approvals Submittal-Approval Date: 03/01/2025

Permits/Approvals Description: As construction activities will result in greater than 5,000 square feet of land disturbance, a Soil Erosion and Sediment Control Plan Certification will be obtained. The Soil Erosion and Sediment Control Plan will be prepared in compliance with the New Jersey Department of Agriculture’s Standards for Soil Erosion and Sediment Control in New Jersey.

Permits/Approvals Status: Intend to Apply

Permits/Approvals Agency-Contact Person: Hunterdon County Soil Conservation District

Permits/Approvals Submittal-Approval Date: 03/01/2025

Permits/Approvals Description: As construction activities will result in greater than one acre of land disturbance, a NJPDES Construction Activity Stormwater General Permit (5G3) will be obtained to control stormwater discharges to surface waters resulting from construction activities.

Permits/Approvals Status: Intend to Apply

Permits/Approvals Agency-Contact Person: NJDEP Division of Water Quality

Permits/Approvals Submittal-Approval Date: 03/01/2025



EasyGrantsID: 79496

National Fish and Wildlife Foundation – Delaware Watershed Conservation Fund 2023, Full Proposal

Title: Closson Site Restoration in the Delaware River Basin

Organization: City of Lambertville

Activities and Outcomes

Funding Strategy: Habitat Management

Metric: DRRF - BMP implementation for nutrient or sediment reduction - Lbs P avoided (annually)

Required: Recommended

Description: Please use FieldDoc to develop estimates of the annual phosphorus reductions from your proposed project. If using another method of calculating reductions please reference in NOTES section.

Starting Value 0.00 Lbs P avoided (annually)
Target value 1.50 Lbs P avoided (annually)

Note: Calculated using the unit areal load by land cover methodology

Funding Strategy: Habitat Management

Metric: DRRF - BMP implementation for nutrient or sediment reduction - Lbs sediment avoided (annually)

Required: Recommended

Description: Please use FieldDoc to develop estimates of the annual sediment load reductions from your proposed project. If using another method of calculating reductions please reference in NOTES section.

Starting Value 0.00 Lbs sediment avoided (annually)
Target value 4800.00 Lbs sediment avoided (annually)

Note: Calculated using the unit areal load by land cover methodology

Funding Strategy: Habitat Management

Metric: DRRF - BMP implementation for stormwater runoff - Volume stormwater prevented

Required: Recommended

Description: Enter the volume (in gallons) of stormwater prevented from entering the system per year; indicate type of BMP(s) in the NOTES section; include method of calculation. Please see the DWCF toolbox on the website for calculation resources.

Starting Value 0.00 Volume stormwater prevented
Target value 5700000.00 Volume stormwater prevented



EasyGrantsID: 79496

National Fish and Wildlife Foundation – Delaware Watershed Conservation Fund 2023, Full Proposal

Title: Closson Site Restoration in the Delaware River Basin

Organization: City of Lambertville

Note: Stormwater runoff will be reduced through a combination of converting maintained lawn to forest and meadow, as well as decompacting the soils and creating microtopography to retain water during a precipitation event. The Model My Watershed Runoff Simulation tool was used to calculate the stormwater volume reduction.

Funding Strategy: Habitat Restoration

Metric: DRRF - Floodplain restoration - Acres restored

Required: Recommended

Description: Enter the number of floodplain acres restored. In the NOTES, indicate the % of vegetation on the pre-project site (0-20%, 21-40%, 41-60%, 61-80%, 81-100%) and the dominant vegetation being restored (Broadleaf, Conifer, Shrub, Grass, Marsh, Swamp).

Starting Value	0.00 Acres restored
Target value	4.60 Acres restored

Note: 3.1 acres of maintained lawn and 1.5 acres of former agricultural land adjacent to a stream channel will be restored to riparian forest, early successional habitat, and meadow; restoration activities include invasive species treatment, soil decompaction, and planting of native vegetation.

Funding Strategy: Habitat Restoration

Metric: DRRF - Land, wetland restoration - # of trees planted

Required: Recommended

Description: Enter the number of trees planted and sustained (tree plantings that are urban/green infrastructure can also be included). In the NOTES section, specify the landcover type prior to planting (barren, cropland, grassland, shrubland), # of acres, forest type planted (broadleaf, conifer, redwood, swamp--either broadleaf or conifer), density per acre, and mortality rate. Do not include any additional trees planted to replace mortality in the numerical metric value.

Starting Value	0.00 # of trees planted
Target value	300.00 # of trees planted

Note: 300 trees and shrubs will be planted in the riparian forest, with some shrubs in the early succession area, all of which is currently managed as a maintained lawn.



EasyGrantsID: 79496

National Fish and Wildlife Foundation – Delaware Watershed Conservation Fund 2023, Full Proposal

Title: Closson Site Restoration in the Delaware River Basin

Organization: City of Lambertville

Funding Strategy: Habitat Restoration

Metric: DRRF - Riparian restoration - Miles restored

Required: Recommended

Description: Enter the number of riparian miles restored, including riparian buffers. In the NOTES section, specify the landcover type prior to planting (barren, cropland, grassland), the dominant vegetation being planted (Broadleaf, Conifer, Shrub, Grass, Marsh, Wet meadow, Swamp), and the average width of the riparian buffer. DO NOT include instream restoration miles in this measurement. If selecting this metric, please select BOTH riparian miles restored and riparian acres restored.

Starting Value 0.12 Miles restored
Target value 0.12 Miles restored

Note:

Funding Strategy: Capacity, Outreach, Incentives

Metric: DRRF - Volunteer participation - # volunteers participating

Required: Recommended

Description: Enter the number of volunteers participating in project implementation, outreach, and education activities. DO NOT double count with # people reached.

Starting Value 0.00 # volunteers participating
Target value 50.00 # volunteers participating

Note: The Environmental Commission, Parks and Recreation Commission, and Lambertville Go Wild will recruit volunteers for clean-up, invasive species management, planting, and post-construction monitoring and maintenance.

Funding Strategy: Capacity, Outreach, Incentives

Metric: DRRF - Outreach/ Education/ Technical Assistance - # people reached

Required: Optional

Description: Enter the number of people who responded to an offer and inquiry delivered by outreach, training, or technical assistance activities; specify the percentage of individuals reached; indicate type of audience (farmers, community members, municipalities) and how individuals are reached in the NOTES section.

Starting Value 0.00 # people reached
Target value 500.00 # people reached

Note: Lambertville’s 3900 residents will be engaged via the City listserv; families of



NFWF

EasyGrantsID: 79496

National Fish and Wildlife Foundation – Delaware Watershed Conservation Fund 2023, Full Proposal

Title: Closson Site Restoration in the Delaware River Basin

Organization: City of Lambertville

neighboring communities including West Amwell and Stockton will use the site. By sharing outreach opportunities with project partners and supporters to expand the reach of the invitations. The project team will track comments and event attendance to estimate success on this metric.



Title: Closson Site Restoration in the Delaware River Basin
 Organization: City of Lambertville

I. PERSONNEL \$0.00

Staff Name	Position	Annual Salary	Project Hours	Hourly Rate	LOE (%)	Project Salary	% Fringe	\$ Fringe	Total Personnel

Totals \$0.00 \$0.00 \$0.00

II. TRAVEL \$0.00

Domestic Airfare – Per Flight

Purpose/Destination	Unit Cost	Quantity	Total Cost

SubTotal \$0.00

International Airfare – Per Flight

Purpose/Destination	Unit Cost	Quantity	Total Cost

SubTotal \$0.00

Train – Per Ticket

Purpose/Destination	Unit Cost	Quantity	Total Cost

SubTotal \$0.00



Title: Closson Site Restoration in the Delaware River Basin
 Organization: City of Lambertville

Rental Car – Per Day

Purpose/Destination	Days/Duration	Unit Cost	Quantity	Total Cost

SubTotal \$0.00

Taxis – Per Trip

Purpose/Destination	Unit Cost	Quantity	Total Cost

SubTotal \$0.00

Mileage – Per Mile

Purpose/Destination	Unit Cost	Quantity	Total Cost

SubTotal \$0.00

Gasoline – Per Gallon

Purpose/Destination	Unit Cost	Quantity	Total Cost

SubTotal \$0.00

Per Diem (M&IE) – Per Day

Purpose/Destination	Days/Duration	Unit Cost	Quantity	Total Cost

SubTotal \$0.00



Title: Closson Site Restoration in the Delaware River Basin
 Organization: City of Lambertville

Lodging – Per Night

Purpose/Destination	Days/Duration	Unit Cost	Quantity	Total Cost

SubTotal **\$0.00**

Meals (no M&IE) – Per Meal

Purpose/Destination	Days/Duration	Unit Cost	Quantity	Total Cost

SubTotal **\$0.00**

III. EQUIPMENT \$0.00

Item Name	Description	Unit Cost	Quantity	Total Cost

IV. MATERIALS & SUPPLIES \$0.00

Type	Purpose	Unit of Measure	Unit Cost	Quantity	Total Cost

V. CONTRACTUAL SERVICES \$322,184.00

Subcontract/Contract – Per Agreement

Contractor Name	Description	Total Cost
Princeton Hydro, LLC	Design, Permitting, and Construction Services	\$322,184.00

SubTotal **\$322,184.00**



EasyGrantsID: 79496
 National Fish and Wildlife Foundation –
 Delaware Watershed Conservation Fund
 2023, Full Proposal

Title: Closson Site Restoration in the Delaware River Basin
 Organization: City of Lambertville

Subgrant – Per Agreement

Subrecipient	Description	Total Cost

SubTotal **\$0.00**

VI. OTHER DIRECT COSTS	\$0.00
-------------------------------	---------------

Type	Purpose	Unit of Measure	Unit Cost	Quantity	Total Cost

VII. TOTAL DIRECT COSTS	\$322,184.00
--------------------------------	---------------------

VIII. INDIRECT COSTS	\$0.00
-----------------------------	---------------

Explanation of Modified Total Direct Cost Base(MTDC)	Rate Type	NICRA Expiration	\$MTDC	Rate(%)	Total Cost

IX. TOTAL PROJECT COSTS	\$322,184.00
--------------------------------	---------------------



NFWF

EasyGrantsID: 79496
National Fish and Wildlife Foundation –
Delaware Watershed Conservation Fund
2023, Full Proposal

Title: Closson Site Restoration in the Delaware River Basin
Organization: City of Lambertville

Budget Narrative

Budget Narrative:

1. Personnel

Personnel -

2. Travel

Domestic Airfare - Per Flight -

International Airfare - Per Flight -

Train - Per Ticket -

Rental Car - Per Day -

Taxis - Per Trip -

Mileage - Per Mile -

Gasoline - Per Gallon -

Per Diem (M&IE) - Per Day -

Lodging - Per Night -

Meals (No M&IE) - Per Meal -

3. Equipment

1133 15th Street, NW
Suite 1100 Washington, DC 20005



NFWF

EasyGrantsID: 79496

National Fish and Wildlife Foundation –
Delaware Watershed Conservation Fund
2023, Full Proposal

Title: Closson Site Restoration in the Delaware River Basin

Organization: City of Lambertville

Equipment -

4. Materials and Supplies

Materials and Supplies -

5. Contractual Services

Subcontract/Contract - Per Agreement -

The budget costs were derived based on competitive design-build quotes from local companies specializing in this type of habitat restoration work. The design and permitting will be conducted by Princeton Hydro. The activities associated with those tasks include:

Field investigations (wetland delineation, geomorphic assessment, topographic survey, & Phase I archaeology survey);

Hydraulic and Hydrologic modeling (to support rigorous NJDEP flood hazard area regulatory approval & ensure stream restoration efforts don't increase flood elevations offsite);

60% Design (engineering design to maximize ecological uplift);

100% Design (value engineering performed using 60% design construction cost as the basis; engineering report to support regulatory approvals);

Permitting (regulatory approvals to be obtained from NJ DEP & Hunterdon County Soil Conservation District; anticipated NJDEP Freshwater Wetland & Flood Hazard Area permits required; soil erosion and sediment control approval)

Budget total for Design: \$184,344

The construction will be performed by Enviroscapes, a subcontractor to Princeton Hydro. The construction-related activities will assist in restoring floodplain function, enhance riparian area, stabilize the unstable stream, and manage stormwater runoff. Construction activities include:



NFWF

EasyGrantsID: 79496

National Fish and Wildlife Foundation –
Delaware Watershed Conservation Fund
2023, Full Proposal

Title: Closson Site Restoration in the Delaware River Basin

Organization: City of Lambertville

Invasive species & debris management
Channel and bank stabilization
Soil Roto-tilling & seeding
Vegetation and deer exclusion cage installation
Sign installation
Budget total for Construction: \$137,840

Princeton Hydro will also provide project management, assist with public outreach, and support the City in administering the grant.

Subgrant - Per Agreement -

6. Other Direct Costs

Other Direct Costs -

7. Indirect Costs

Indirect Costs -



EasyGrantsID: 79496

National Fish and Wildlife Foundation – Delaware Watershed Conservation Fund 2023, Full Proposal

Title: Closson Site Restoration in the Delaware River Basin

Organization: City of Lambertville

Matching Contributions

Matching Contribution Amount:	\$0.00
Type:	In-kind
Status:	Pledged
Source:	City of Lambertville
Source Type:	Non-Federal
Description:	City staff time to participate in the design development, outreach activities, coordinate volunteer participation, and administer the grant

Matching Contribution Amount:	\$0.00
Type:	In-kind
Status:	Pledged
Source:	Parks and Recreation Commission, City of Lambertville
Source Type:	Non-Federal
Description:	Manage public outreach meetings, lead guided site walks, plant trees and shrubs, manage invasive species, recruit, train, and supervise volunteers, manage City resources, perform site maintenance.

Matching Contribution Amount:	\$0.00
Type:	In-kind
Status:	Pledged
Source:	Environmental Commission, City of Lambertville
Source Type:	Non-Federal
Description:	Participate in outreach events and recruit, train, and supervise volunteers.

Matching Contribution Amount:	\$0.00
Type:	In-kind
Status:	Pledged
Source:	Lambertville Goes Wild
Source Type:	Non-Federal
Description:	Participate in design development and landscape plans, design interpretive



EasyGrantsID: 79496

National Fish and Wildlife Foundation – Delaware Watershed Conservation Fund 2023, Full Proposal

Title: Closson Site Restoration in the Delaware River Basin

Organization: City of Lambertville

	signs, develop interpretive brochures and scavenger hunts, lead guided site walks, plant trees and shrubs, manage invasive species, recruit, train, and supervise volunteers.
--	---

Matching Contribution Amount:	\$34,400.00
Type:	In-kind
Status:	Pledged
Source:	Princeton Hydro
Source Type:	Non-Federal
Description:	Lead the concept design and provide discounted engineering, permitting, and construction services.

Matching Contribution Amount:	\$25,000.00
Type:	Cash
Status:	Received
Source:	County of Hunterdon Open Space
Source Type:	Non-Federal
Description:	Access City of Lambertville banked funds with the County Open Space fund.

Matching Contribution Amount:	\$0.00
Type:	In-kind
Status:	Pledged
Source:	Sourland Conservancy
Source Type:	Non-Federal
Description:	Sourland Conservancy will supply and plant 300 tree and shrub saplings with deer protection and provide ongoing maintenance for 5 years.

Matching Contribution Amount:	\$20,664.50
Type:	In-kind
Status:	Pledged
Source:	City of Lambertville
Source Type:	Non-Federal



EasyGrantsID: 79496

National Fish and Wildlife Foundation – Delaware Watershed Conservation Fund 2023, Full Proposal

Title: Closson Site Restoration in the Delaware River Basin

Organization: City of Lambertville

Description:	Rates for the above:Cynthia L. Ege CMR RMC 78 hrs @ \$51.04; Lindsay Hansche, CMR 112 hrs @ \$33.20; Lester Myers, Public Works Director, 234 hours @ \$33.93. Susan Bacorn Deputy Treasurer, 136 hrs @ \$34.01. Room rental, 2 times at \$200 each.
---------------------	--

Matching Contribution Amount:	\$90,497.88
Type:	In-kind
Status:	Pledged
Source:	Parks & Recreation Commission, City of Lambertvill
Source Type:	Non-Federal
Description:	Rates for the above: Mary Anne Borge, Parks & Recreation Commission Chair, 440 hrs @ \$75; other Commissioners 667 hours at \$33.82/hour and volunteers 767 hours at \$33.82/hour. 3 interpretive signs, \$3000/sign.

Matching Contribution Amount:	\$41,429.50
Type:	In-kind
Status:	Pledged
Source:	Environmental Commission, City of Lambertville
Source Type:	Non-Federal
Description:	Rates for the above: Elizabeth Magill Peer, Environmental Commission (EC) Chair and other EC members 500 hrs @ \$33.82. Resident volunteers 725 hrs @ \$33.82.

Matching Contribution Amount:	\$101,853.44
Type:	In-kind
Status:	Pledged
Source:	Lambertville Goes Wild
Source Type:	Non-Federal
Description:	Rates for the above: Mary Anne Borge, Team Leader, 593 hrs @ \$75; Lauren Kovacs, LLA and graphic designer, 60 hrs @ \$200 for landscape design; 293 hrs @ \$75 for graphic design and other work. Market rate. Team members and volunteers 692 hrs @ \$33.82.



NFWF

EasyGrantsID: 79496

National Fish and Wildlife Foundation – Delaware Watershed Conservation Fund 2023, Full Proposal

Title: Closson Site Restoration in the Delaware River Basin

Organization: City of Lambertville

Matching Contribution Amount:	\$19,016.10
Type:	In-kind
Status:	Pledged
Source:	Sourland Conservancy
Source Type:	Non-Federal
Description:	Rates for the above: Robert Aluck, Sourland Conservancy Project Manager, 14 hrs @ \$35. Interns & volunteers 480 hrs @ \$33.82. 250 tree & shrub seedlings @ \$1.49 each, 50 tree & shrub saplings @ \$2.40 each, 300 deer protection tubes/netting @ \$6.

Total Amount of Matching Contributions:	\$332,861.42
--	--------------



NFWF

EasyGrantsID: 79496

National Fish and Wildlife Foundation – Delaware Watershed Conservation Fund 2023, Full
Proposal

Title: Closson Site Restoration in the Delaware River Basin

Organization: City of Lambertville



EasyGrantsID: 79496

National Fish and Wildlife Foundation – Delaware Watershed Conservation Fund 2023, Full Proposal

Title: Closson Site Restoration in the Delaware River Basin

Organization: City of Lambertville

The following pages contain the uploaded documents, in the order shown below, as provided by the applicant:

Upload Type	File Name	Uploaded By	Uploaded Date
DWCF Full Proposal Narrative 2023	2023 Lambertville Full Proposal Narrative Template .pdf	Ege, Cynthia	03/14/2023
Project Map	Project_Context.pdf	Ege, Cynthia	03/07/2023
Project Map	Closson Context Map 2.pdf	Ege, Cynthia	03/08/2023
Letters of Support	North American Butterfly Assoc LOS.pdf	Ege, Cynthia	03/08/2023
Letters of Support	Watershed Institute.PDF	Ege, Cynthia	03/16/2023
Letters of Support	_NFWF_Closson_Letters_of_Support.pdf	Ege, Cynthia	03/14/2023
Conceptual Plans	Restoration_Plan_Closson_Site_2023.pdf	Ege, Cynthia	03/07/2023
Conceptual Plans	Restoration_Plan_Closson_Site_Construction_Details_2023.pdf	Ege, Cynthia	03/07/2023
Photos - Jpeg	Capture.JPG	Ege, Cynthia	03/07/2023
Photos - Jpeg	Screenshot 2023-03-07 145203.jpg	Ege, Cynthia	03/07/2023
Photos - Jpeg	Screenshot 2023-03-07 145313.jpg	Ege, Cynthia	03/07/2023
Statement of Litigation	Lambertville - Grant Statement of Litigation.doc	Ege, Cynthia	03/07/2023
Board of Trustees, Directors, or equivalent	Board of Directors Statement.docx	Ege, Cynthia	03/07/2023
Applicant Controls Questionnaire (Pre 5.24.23)	NFWF SIGNED QUESTIONNAIRE.pdf	Ege, Cynthia	03/07/2023
Other Documents	ejscreen_report.pdf	Ege, Cynthia	03/13/2023



NFWF

EasyGrantsID: 79496

National Fish and Wildlife Foundation – Delaware Watershed Conservation Fund 2023, Full
Proposal

Title: Closson Site Restoration in the Delaware River Basin

Organization: City of Lambertville

Other Documents	Closson Property Photos.pdf	Ege, Cynthia	03/13/2023
-----------------	-----------------------------	--------------	------------

The following uploads do not have the same headers and footers as the previous sections of this document in order to preserve the integrity of the actual files uploaded.



NFWF

**Delaware Watershed Conservation Fund 2023 Grants:
Full-proposal Project Narrative Template
Closson Site Restoration in the Delaware River Basin**

Project Type: Please select the DWCF grant category for the proposed project.

- Implementation

- Capacity Building

- Planning

- Research, Monitoring & Evaluation

Project Priority:

The City of Lambertville seeks funds from the Delaware Watershed Conservation Fund to enhance the recently acquired Closson Farm property in the Ely Creek Watershed within the Lower Central Sub-watershed of the Delaware River Basin. The drivers for the prioritization of this project are two-fold: rectify destabilization of Ely Creek that occurred during Ida and proactively design the site for increased resilience to future storm events in order to decrease stormwater runoff volume, decrease nitrogen, phosphorus, and sediment pollutant loading to the tributary and thus improve the water quality of the Delaware River. Additionally, the project will have environmental, social, and economic benefits for the community including stream bank stabilization, sediment control, runoff flow reduction, increased wildlife habitat, and improved public access to passive nature-based recreation.

The three objectives of the project are to 1) Mitigate Floodwaters and improve water quality from a degraded stream that drains to the Delaware River, 2) improve wildlife habitat through creation of a riparian forest, early succession habitat, and a meadow, 3) engage and educate the community about the benefits of these actions, and enhance public access to passive nature-based recreation. These objectives were identified as key priorities by the community during post-acquisition outreach. The completed project will result in 4.6 acres of restored floodplain, 300 trees planted, measurable sediment and nutrient reduction, reduced stormwater runoff, new and diverse wildlife habitat, community engagement, new walking paths, and the opportunity for volunteer engagement. Additionally, the City plans to engage the community as partners in the design-build process, and to create post-construction education through interpretive signage and create year-round public access and connectivity to existing community walking paths.

Overall this project will help achieve goals outlined in all four DWCF Strategic Program Areas, as well as Cross-Program Activities 1, 2, and 4. Specifically, the project aligns with the following focus areas within the strategic program areas:

- Conserve and restore riparian buffers (*Delaware River Basin Restoration Program Area #1*)
- Create diverse habitat for birds, butterflies, bees and other wildlife (*Delaware River Basin Restoration Program Area #1*)
- Control existing invasive species infestations and promote native communities (*Delaware River Basin Restoration Program Area #1*)
- Reduce non-point source pollution including sedimentation from agricultural, municipal, and urban landscapes (*Delaware River Basin Restoration Program Area #2*)
- Reduce nutrient inputs into the river and tributaries (*Delaware River Basin Restoration Program Area #2*)
- Reconnect floodplains to adjacent waterways to improve resiliency and reduce flood damage (*Delaware River Basin Restoration Program Area #3*)
- Conserve and restore riparian corridors to improve habitat and reduce flooding (*Delaware River Basin Restoration Program Area #3*)

- Identify stormwater management challenges and work with local governments to increase opportunities for natural stormwater management to reduce flooding (*Delaware River Basin Restoration Program Area #3*)
- Increase and maintain access to protected land with public benefits (*Delaware River Basin Restoration Program Area #4*)
- Increase and maintain number of recreational opportunities and experiences (*Delaware River Basin Restoration Program Area #4*)

To accomplish these objectives, the City Clerk’s office will lead the project with support from the Parks and Recreation and Environmental Commissions. In addition, the City is partnering with Lambertville Goes Wild on education and outreach, and retaining the services of Princeton Hydro and Envirosapes. This project brings together experts in grant management and project oversight, community engagement and education, restoration design and construction, water resources management, and ecological restoration that will provide significant new wildlife habitat. These organizations form the core Project Team that will advance the restoration planning, design, and construction, with support from additional partners. In addition, to date, the City has received letters of support from twelve additional regional organizations with an interest in this project, with one additional letter anticipated.

Project Context:

The City of Lambertville in Hunterdon County, NJ is located along the Delaware River in the Sourland Mountains. The Delaware & Raritan Canal, which borders the west side of the City, and the Sourland Mountains are both recognized by the National Audubon Society as Important Birding Areas. The Delaware is an important migration pathway for both birds and butterflies.

Lambertville is in prime American Shad spawning territory, a species that has long been central to the heart of the Community, with both commercial and recreational fisherman using Lambertville to haul catches throughout the season. The City hosts Shadfest annually to promote the river and its aquatic life. Preserving and restoring water quality is a core value within the City. This project gives the City a unique opportunity to enhance the water quality of Ely Creek, a direct tributary of the Delaware River, mitigate floodwaters, and establish significant new wildlife habitat within the City limits by restoring 4.6 acres of undeveloped land.

In May of 2021, the City of Lambertville acquired the Closson Farm, a historic property in the northern reach of town. This property is on a hillside, with a branch of Ely Creek flowing downhill through it. The property has both historic and current significance to the community, in addition to being the last remaining large undeveloped parcel. On the property sits the Holcombe house, aka Washington’s Headquarters, built about 1724, along with some barns from the same era. Most recently, the property was used as a homestead and farm market, with the public allowed to sled down the grassy hill in the winter. After the acquisition, the City’s Community Action Team spent months gathering feedback from the community on what should be done on the property. This effort informed the current concept for this project. Based on the feedback, the City will use a significant part of the site to provide flood/climate change mitigation; diverse habitat including riparian forest, early succession, and meadow; and walking paths and educational opportunities for residents.

Lambertville is vulnerable to flooding from the Delaware, from three creeks—Ely, Swan, and Alexauken--that run through it, and from flash flooding from the hillsides on three sides of the City. When hurricane Ida struck the City in September 2021, flash flooding from this hillside property, including Ely Creek, caused significant damage to homes, businesses, and to a road culvert. This event made clear the urgency of stabilizing Ely Creek, and leveraging the parcel’s location to attenuate stormwater coming down the hillside. There are two other flood risk management efforts on Ely Creek. Previously, the City installed a flood mitigation project to reduce backflooding into the community from the Delaware River. After Ida, the City secured a grant from NRCS to repair the road culvert adjacent to property that experienced significant flood damage during hurricane Ida, mentioned above. Through its stormwater management and restoration outcomes, the Closson Site Restoration Project will help mitigate future flood damage to these homes, businesses, and the culvert.

The Closson property is directly north of additional upland forest open space owned by the City. The area is known to host Red Fox, Cooper’s Hawks, Pileated Woodpeckers and other wildlife. Many other birds call this area home, and there are interesting native trees and herbaceous plants present including Mayapple, Early Saxifrage, and Plantain-leaved Pussytoes

– a caterpillar food plant for American Lady butterflies. Restoration of the Closson property will result in a significant expansion of diverse wildlife habitat in the center of the City, easily accessible to all residents, and within walking distance for many. An opportunity to conduct a restoration project of this size, at a location with visibility and impact, is rare in the City of Lambertville. The Closson Farm property is the last remaining undeveloped parcel of its size and the fact that the family chose to pursue an acquisition by the City rather than a developer demonstrates how valuable adding open space is to the community, and those who care for it. This timely project will meet both the community’s interests for the site and benefit the larger Delaware River Watershed by improving water quality, creating significant new wildlife habitat, enhancing public access and recreation, and increasing education and awareness of the value of ecosystems and the services they provide within the Watershed.

This project is consistent with the City’s priorities and actions to support wildlife, and part of a larger regional, and even national, effort. In 2017, the governing body passed a resolution in support of Lambertville Goes Wild’s efforts to lead the City to certification by the National Wildlife Federation (NWF) as a community wildlife habitat. The City achieved certification in July of 2019, and has successfully maintained certification each year since then. In addition to certifying many private properties as wildlife habitats, we have planted a pollinator garden, a rain garden, a riparian buffer, and most recently 20 trees and 2,000 herbaceous perennials on a City-owned vacant lot purchased with open space funds. We also have a wildlife garden at the Lambertville Public School and a pre-school, Lambertville Academy. Lambertville serves as a model and mentor for other regional communities in the NWF program, including Ewing Township, NJ, and New Britain, PA. We have secured funds to do restoration work in the adjacent City-owned forest to the south of the Closson property, necessitated by the loss of Ash trees due to the Emerald Ash Borer, and the incursion of invasive plant species. The restoration will include managing invasive species, planting hundreds of new trees and shrubs, and removing any Ash trees that are a threat to homes or the Nature Trail that runs through the property. In addition, we have secured funds for a significant expansion of the Nature Trail, from the current 1,816 linear feet to a total of 6,739 linear feet. The Closson property restoration will create substantial new forest, successional and meadow habitat, and will allow us to extend the Nature Trail to encompass these habitats. (See attached context maps showing the above-mentioned projects and project areas).

We are working on this project with our regional partners, including the Sourland Conservancy, the New Jersey Invasive Species Strike Team (NJISST), and Washington Crossing Audubon. The Sourland Conservancy has a major effort underway to plant trees in the Sourlands because so many are being lost due to the Emerald Ash Borer. They have committed to providing the 300 trees that will be used in the Closson restoration, as well as planting several hundred trees on a property at the south end of Lambertville. We are consulting on invasive species removal with the NJISST, and will partner with Washington Crossing Audubon to provide guided bird walks.

This is the City of Lambertville’s second application to the Delaware Watershed Conservation Fund for this project, after being unsuccessful in our application last year. In addition to in-kind contributions of time and resources from city staff and volunteers, we have secured in-kind contributions from The Parks & Recreation and Environmental Commissions, Lambertville Goes Wild, and Sourland Conservancy, and matching funds from the County of Hunterdon’s Open Space Fund. We look forward to seeing this project come to fruition alongside our project partners through funds received from the DWCF.

Objectives and Methods:

For this project we’ve identified three objectives that align with all four DWCF Strategic Program Areas, as well as Cross-Program Activities 1, 2, 3, and 4.

- 1. Mitigate floodwaters and improve water quality from a degraded stream that drains to the Delaware River,**
(DWCF Strategic Program Area #1, #2, #3, Cross-Program Activities #1, #2, #3, and #4)

Methods:

The primary focus of this project is to enhance the ecological value of the property by stabilizing Ely Creek and converting the landcover to riparian forest, native meadow, and early succession habitat. The plant selection will be native with intent to attract at-risk species, to the extent possible. Field investigations include a wetland delineation, geomorphic assessment, topographic survey, and Phase I Archaeology survey. A detailed hydrologic and hydraulic model will also be developed to ensure stream restoration efforts do not increase flood elevations offsite and to support the rigorous NJDEP flood hazard area regulatory approval. Construction activities include invasive species and debris management, channel and bank

stabilization, soil roto-tilling and seeding, vegetation and deer exclusion cage installation, and sign installation. The Project Team has pledged to volunteer workdays and monthly invasive species monitoring as part of its routine open-space maintenance routine. Cross-Program Activity #1, the green infrastructure techniques used will demonstrate to residents the power of natural landscaping and native plants in solving climate change associated issues such as flooding. Cross-Program Activity #2, specifically improving the resiliency of the landscape by managing stormwater and improving the water quality of Ely Creek. Cross-Program Activity #3, this project offers new opportunities to our regional partners to monitor water quality, and inventory wildlife, including bird and butterfly populations through annual counts. Cross-Program Activity #4, we have diverse partners and regional advisors involved in this project, which will leverage available technical assistance for effective project implementation.

Outputs:

1. Assessment findings to include wetland delineation, geomorphic assessment, topographic survey, and Phase I Archaeology survey
2. Detailed hydrologic and hydraulic model
3. 60% engineering design plans
4. 100% engineering design plans and engineering report

Outcomes:

1. Restore instream habitat and streambanks in degraded areas
 2. Restore riparian and floodplain function
 3. Reduce nutrient inputs into the river and tributaries
 4. Improve habitat resilience
 5. Invasive species management and promote native communities
2. **Improve wildlife habitat through creation of a riparian forest, early succession habitat, and a meadow, (DWCF Strategic Program Area #1, #2, #3, #4; Cross-Program Activities #1, #2, #3, #4, and #5)**

Methods:

The plan is to manage invasive species and create 4.6 acres of new habitat consisting of riparian forest, early succession, and meadow. This will provide connectivity with adjacent forest habitat directly to the south. Because Lambertville is in an Important Birding Area as designated by the National Audubon Society, as well as an important migration corridor for both birds and butterflies (per the North American Butterfly Association), this new habitat will have an important impact for migrating and resident bird, butterfly, bee and other pollinator and wildlife species. Locations such as this where one habitat transitions to another are especially productive, since they typically host animals from both habitats. Both nectar and caterpillar food plants will be included. This will make a significant addition to the pollinator habitat we have already established on both public and private property in the City through our work in the NWF Community Wildlife Habitat program. The Cross Program Activities #1, #2, #3, #4, and #5 are all a part of achieving this objective.

Outputs:

1. Remove invasive species, including Multi-flora Rose, Wineberry, Japanese Barberry, Oriental Bittersweet, Japanese Honeysuckle, Garlic Mustard
2. Plant 300 native trees of a variety of species, with deer protection
3. Plant early successional habitat with some shrubs and with a diverse mix of herbaceous perennials, including both nectar and caterpillar food plants
4. Plant meadow habitat with a diverse mix of herbaceous perennials, including both nectar and caterpillar food plants

Outcomes:

1. 4.6 acres of new habitat for resident wildlife, of three habitat types transitioning from one to the next
 2. Habitat connectivity to other nearby forest owned by the City
 3. Habitat for birds, butterflies and other insects migrating in this important flyway,
3. **Engage and educate the community about the benefits of these actions, and enhance public access to passive nature-based recreation, (DWCF Strategic Program Area #4, Cross-Program Activities #1)**

Methods:

The current project concept is based on the input of over 450 community members through outreach conducted in 2021 around the future of the property. This project will build on that community engagement by facilitating an in-person design charrette to gather input on the onsite access and recreational opportunities. In addition, volunteers will be recruited and trained to help in the execution of the project, for example, with invasive species management.

The final design of the recreation and public access opportunities will be informed by the community design charrette and other input collected through project outreach efforts. The current concept includes 1,500 linear feet of new mowed trails throughout the site. There will be no fees or limitations to accessing the site and public parking is available on the street adjacent to the project location. Once the construction is completed, Lambertville Goes Wild and the Parks and Recreation Commission will host community events, such as an annual butterfly count, to increase awareness of the site as a recreational amenity. We will include interpretive signs and informational brochures downloadable from the City's website. The extensive community involvement leading up to the project, as well as during and after project implementation, directly aligns with Cross-Program Activity #1 in the strengthening of the sense of stewardship of the City's natural resources.

Outputs:

1. Meeting notes and attendance reflecting diverse community engagement
2. Community-informed final design
3. Design renderings and illustrations based on community feedback, that will be presented during a site walk.
4. Three permanent educational signs to be installed along the walking trails.
5. Creation of interpretive brochures for the site
6. Linear feet of new trails. The current concept includes 1,500 linear feet, but the final design will be based on community input.
7. Interpretive signs describing the wildlife and plants found at the site, and the stormwater management function provided.
8. Number of new on-site events based on community input. Potential events include guided walks and annual butterfly and bird counts

Outcomes:

1. Increased awareness of project and ecological significance.
2. Community volunteer opportunities both during and post-construction
3. Increased access to nature-based recreation for residents and the larger regional community
4. Provide year-round recreation opportunities onsite
5. An expanded network walking trails by connecting Closson Site to the Nature Trail just to the south.

Partner Justification:

This project brings together experts in grant management and project oversight, community engagement and education, restoration design and construction, water resources management, and ecological restoration. The City of Lambertville, the Lambertville Environmental Commission, the Lambertville Parks and Recreation Commission, and Lambertville Goes Wild have partnered on this project, which is very impactful for Lambertville and the region. The City of Lambertville is contracting Princeton Hydro, LLC and Enviroscapes for technical expertise and professional services. These organizations form the core Project Team that will advance the restoration planning, design, and construction, with support from additional partners. In addition, Sourland Conservancy is providing the trees, and to date, the City has received sixteen letters of support from regional partners with an interest in this project.

- | | |
|--|--|
| 1. Lambertville Parks & Recreation Commission | 8. The Nature Conservancy |
| 2. Lambertville Environmental Commission | 9. FoHVOS New Jersey Strike Team |
| 3. Lambertville Goes Wild | 10. Green Acres Program, NJDEP |
| 4. Princeton Hydro | 11. Township of West Amwell |
| 5. Delaware River Basin Commission | 12. New Jersey Conservation Program |
| 6. Fisherman's Mark | 13. Sourland Conservancy |
| 7. Lambertville Office of Emergency Management | 14. North American Butterfly Association |
| | 15. SPLASH |
| | 16. Washington Crossing Audubon Society |

The City of Lambertville is the property owner of the project site and the ideal leader for this effort. The City has a staff of 47 employees and 5 council members, including the Mayor. Despite the small size, the City has strong experience with managing grants and complex projects through assistance and support of committed staff and community volunteers. The City will lead grant management and project management for this restoration effort.

Lambertville Parks and Recreation Committee

The Parks and Recreation Commission oversees operations and maintenance of city parks and open space, while also offering recreational events and activities for the community at large. The Parks and Recreation Commission tends the City's five parks and natural open space, by honoring shared values of sustainability, natural habitat encouragement, low fossil fuel footprint and community stewardship and enjoyment of the outdoors. The Commission will provide project leadership and document review, lead the outreach and education tasks with Lambertville Goes Wild, and create the post-site maintenance manual.

Lambertville Environmental Commission is composed of volunteers dedicated to advocate for the protection, development and/or responsible use of natural resources within the City. Lambertville continues to lead the way on protecting the environment, setting an example for other cities and towns through effective ways to forge a green future, such as banning the use of single-use plastics. The Environmental Commission is integral to these efforts, providing innovative, cutting-edge recommendations to the Mayor and Council and educating the public about the environmental challenges facing the City. The Commission will support the project through project leadership and document review, outreach, and volunteering time for stewardship and construction/maintenance.

For this project, the **City of Lambertville** has partnered with the following experts in ecological restoration:

- ❖ **Lambertville Goes Wild** is a small local organization with a mission to make Lambertville a more welcoming place for birds, butterflies, and even people. Through education and direct technical assistance, Lambertville Goes Wild works with homeowners to help reduce stormwater runoff, protect the soil from erosion, and keep pollution out of rivers, streams, reservoirs and wells through invasive species management, landscape design, and native plantings. Lambertville Goes Wild led Lambertville to successful certification as a community Wildlife Habitat in 2019, a certification which has been maintained since. Lambertville Goes Wild was the 2020 recipient of the Land Ethics Award given by Bowman's Hill Wildflower Preserve in recognition of their work promoting the use of native plants and gardening for wildlife. They will lead the outreach and education tasks, as well as the post-construction maintenance and monitoring.
- ❖ **Princeton Hydro** is a water resources engineering and natural resource management consulting firm. Princeton Hydro has over 20 years of experience working in the field of ecosystem restoration in NJ and the surrounding states, with specific experience in wetland restoration, living shorelines, stormwater management, aquatic ecology, and habitat enhancement. Their team of wildlife biologists, ecologists, regulatory specialists, and water resource engineers have been working with the City of Lambertville for 15 years on flooding, stormwater, water quality, and ecological projects. Princeton Hydro has worked on multiple NFWF grants and are familiar with all reporting requirements. They will lead the modeling and data collection, restoration design, and permitting tasks.
- ❖ **Enviroscapes Inc** provides specialized expertise in streambank restoration services, permanent and temporary seeding, site clearing, installation of soil erosion control measures, and specialty construction services including ecological restoration involving living shorelines and utility line rights-of-ways. Incorporated in March of 1991, Enviroscapes has successfully completed over 1,500 environmental & ecological restoration projects in its 29-year history. Enviroscapes has a solid history supporting both public and private sector clients including public utilities, local, county, state, and federal government agencies, environmental consultants, general construction, and environmental contractors with restoration services. In addition, the firm has an exemplary safety record and a proven track record of performing work on time and within budget. They will lead the construction phase.
- ❖ **Sourland Conservancy** is a non-profit organization whose mission is to protect, promote and preserve the Sourland Mountain region's history and ecology, especially through stewardship of natural resources and advocacy through effective citizen action. They are currently engaged in a project to plant thousands of trees in the Sourlands to restore habitat lost to the Emerald Ash Borer. They will provide and plant 300 trees for this project and provide ongoing maintenance.

Key Project Team Members:

Cindy Ege, CMR, RMC City Clerk City of Lambertville	Ms. Ege has been City Clerk for over 10 years. Prior to joining the City staff, she served for 12 years as a Councilmember. Her unparalleled understanding of the community and the region makes her uniquely qualified to lead this restoration effort.
Mary Anne Borge, Chairperson Parks and Recreation Commission	Ms. Borge is a naturalist, photographer, writer, and educator. She is a certified Pennsylvania Master Naturalist, the editor of <i>Butterfly Gardener</i> magazine, and an instructor at Bowman's Hill Wildflower Preserve. She is a founder of Lambertville Goes Wild. She has successfully managed several grant-funded projects for the City. Her role in this project will be education, outreach, planting design, and site monitoring and maintenance.
Liz Magill Peer, Chairperson Environmental Commission	Ms. Peer is a local artist with a passion for the environment, and specifically for addressing the many issues contributing to the current climate crisis. Her role will be input on documents and design, and working with the community to organize volunteers during and after the project.
Lauren Kovacks, LLA Landscape Architect Lambertville Goes Wild	Ms. Kovacs, LLA, a landscape architect with over ten years of experience in sustainable landscape design. She is a founding member of Lambertville Goes Wild. Her role in this project will be education, outreach, planting design, and site monitoring and maintenance.
Christiana Pollack, GISP, CFM, CERP Director of Restoration and Resiliency Princeton Hydro, LLC	As a Director of Restoration and Resiliency, Ms. Pollack oversees numerous ecological restoration design, wetland restoration, and geospatial projects that provide ecosystem services to mitigate flood risks, improve water quality, and strengthen storm resiliency. Ms. Pollack brings 16 years of professional experience as a Certified Floodplain Manager, Ecologist, and GIS Professional at Princeton Hydro. She has an extensive background in project management, NFWF grants, watershed management, ecosystem restoration, and nature and nature-based feature designs used to reduce flood risk while maximizing ecological benefits. Ms. Pollack's role will be management of the design and construction phases of the project. .
Geoffrey M. Goll, PE President & Founding Principal Senior Engineer Princeton Hydro, LLC	Mr. Goll is a founding Partner of Princeton Hydro and has extensive experience in geotechnical engineering, stormwater management, hydrology, floodplain hydraulics, environmental assessments, and environmental permitting; his professional background is specific to water resource and geotechnical engineering. With over 32 years of experience, Mr. Goll brings extensive knowledge and expertise related to habitat restoration projects involving stormwater management, stream restoration, and floodplain management, among many others. His role in this project will be providing engineering QA/QC for the field investigations and design.

Diversity, Equity, Inclusion and Justice:

Community(ies) or Target Audience	Race/Ethnicity	Poverty Rate	Low Income %	Annualized Unemployment Rate
City of Lambertville	White (Non-Hispanic) - 79.1% White (Hispanic) - 9.82% Asian (Non-Hispanic) - 3.68% Multiracial (Hispanic) - 3.52% Black or African American (Hispanic) - 1.97% Other (Hispanic) - 1.89%	6.8%	19%	4%

Community Characteristics

The City of Lambertville is a small historic community of approximately 3,900 residents. Approximately 22 percent of the residents are over the age of 65. The community is largely proficient in English, with only 4 percent of the population having low-English fluency. According to the American Community Survey 6.8 percent of residents fall below the poverty line within the City. Fisherman's Mark, a local community-based organization that provides social services to underserved members of the community, noted that it served 500 clients in crisis during 2021. One of the major efforts Fisherman's Mark organized was providing recovery funds to households within the City in response to Hurricane Ida. Many of these individuals live, or lived, downstream of the project site in a low-income housing complex heavily damaged during Hurricane Ida. This complex is only one of three affordable housing rental complexes within City limits, so efforts to reduce its vulnerability are a high priority for the City.

The EJ Screen report has been uploaded with this application. The report, along with the US Census Bureau website, was the source of data for the table above.

Planned Outreach and Community Engagement Activities

This project includes several opportunities to engage members of the public. The City works closely with Fisherman’s Mark to reach socially-vulnerable community members that may be underrepresented. During the design phase, the City will host a design charrette for the community. Once the design is optimized, the Parks and Recreation Commission and Lambertville Go Wild will provide an onsite walking tour to present the design vision. Design renderings and illustrations and descriptions of project benefits, such as stormwater management, will be developed and presented in brochures and/or presentation boards to communicate the future condition of the site. The City will work with Fisherman’s Mark and the Department of Community Affairs to see if translation services can be provided for some or all of this programming. The City will work with Fisherman’s Mark and other organizations within the community to ensure participation is representative of the populations that will benefit from the project. To track participation, the Project Team will track number of attendees and number of volunteers.

Work Plan:

Statement of overall project methodology or approach:			
<p>The restoration project includes 8 tasks using the proposed funds under this grant opportunity, and two additional post-grant activities. The project will kick-off and begin initial outreach to build on the community engagement efforts conducted in 2021 post-acquisition and the interest from the organizations that sent in letters of support for the project. During the first six months, Princeton Hydro will conduct the necessary data collection and analysis to support the design and regulatory approvals. Before the design moves to construction there will be a public design charrette to gather input. Engineering and permitting will occur after there is consensus on the concept. During these periods, there will be opportunity to engage the community by preparing volunteer days for planting and debris clean-up. Construction is expected to take about 3-4 weeks, with a completion date of late-spring 2025. Post construction outreach activities and site stewardship and monitoring will be ongoing after the completion of the grant period. Project partners are committed to active use and maintenance of the site.</p>			
Activity	Responsible Party	Time Period	Expected Result of Activity (outputs)
<i>Project Kickoff and Outreach</i>	City of Lambertville and Parks & Recreation Commission	Months 1 to 2	<ul style="list-style-type: none"> • A project partner kickoff meeting will be held to discuss the project goals and objectives, design and construction schedule, and organize the public design charrette. • The design charrette will be held in person to obtain input from the public for access and recreational opportunities. • With input from the project partners and the public, the concept will be optimized before advancing to the engineering phase.
<i>Field Activities and Hydrologic & Hydraulic Modeling</i>	Princeton Hydro	Months 2 to 6	<ul style="list-style-type: none"> • The goal of this task is to collect the data and information required to support the design and regulatory approvals. Field investigations include a wetland delineation, geomorphic assessment, topographic survey, and Phase I Archaeology survey. A detailed hydrologic and hydraulic model will also be developed to ensure stream restoration efforts do not increase flood elevations offsite and to support the rigorous NJDEP flood hazard area regulatory approval.
<i>60% Design Phase</i>	Princeton Hydro	Months 4 to 8	<ul style="list-style-type: none"> • The optimized concept will be advanced to the 60% design phase. The results of the field investigations and hydrologic and hydraulic modeling will inform the engineering design that will ultimately maximize ecological uplift when constructed. A preliminary construction cost estimate will also be developed during this phase. • The 60% design plans will be presented to the project partners during a project partner review meeting.

<i>100% Design Phase</i>	Princeton Hydro	Months 9 to 11	<ul style="list-style-type: none"> ● The 60% engineering design will be advanced to 100%. As part of this task, a value engineering exercise will be completed using the 60% preliminary construction cost estimate as the basis. This exercise will ensure the construction cost is within the allocated budget. ● In addition to developing a final construction cost, an engineering report will be drafted to support regulatory approvals. ● The Parks and Recreation Commission will create a site maintenance manual detailing post-construction maintenance requirements. This will include establishing ‘no-mow’ zones, providing instructions to maintain the wildflower meadow, and monitoring and removal of invasive plant species.
<i>Outreach and Education</i>	Lambertville Goes Wild and Parks & Recreation Commission	Months 1 to 16	<ul style="list-style-type: none"> ● During the design phase, public outreach will include an onsite walking tour to present the design vision. Design renderings and illustrations and descriptions of project benefits, such as stormwater management, will be developed and presented in brochures and/or presentation boards to communicate the future condition of the site. ● Three educational signs will be curated and permanently installed onsite. The signs will educate readers about the project elements, describe the ecological value and flood management benefits being restored and its relationship to the Delaware River, discuss the importance of resiliency in light of climate change impacts, and offer restoration tips and suggestions that can be completed at home.
<i>Permitting</i>	Princeton Hydro	Months 10 to 14	<ul style="list-style-type: none"> ● Regulatory approvals will be obtained from the appropriate Federal, State, and Local agencies including New Jersey Department of Environmental Protection (NJDEP) and Hunterdon County Soil Conservation District. It’s anticipated that both NJDEP Freshwater Wetland and Flood Hazard Area permits will be required due to the nature of the proposed restoration in the channel and riparian area. Soil erosion and sediment control approval will also be acquired.
<i>Construction</i>	Enviroscapes	Month 15	<ul style="list-style-type: none"> ● The expected construction duration is three to four weeks. Construction activities include invasive species and debris management, channel and bank stabilization, soil roto-tilling and seeding, vegetation and deer exclusion cage installation, and sign installation. These activities will assist to restore floodplain function, enhance the riparian area, stabilize the unstable stream, and manage stormwater runoff.
<i>Grant Administration</i>	City of Lambertville	Months 1 to 16	<ul style="list-style-type: none"> ● Grant administration activities include project management, quarterly reporting, and monthly invoicing. ● Under this task, a final report will be developed to document the project process, photo document pre- and post-construction conditions, and update metrics.

<i>Outreach Activities Post-Construction</i>	Lambertville Goes Wild; Parks and Recreation Commission, and Environmental Commission	Month 16+	<ul style="list-style-type: none"> ● Outreach activities related to the project will extend beyond the design and construction duration. Seasonally, the project partners will offer guided walks that focus on the restoration project benefits including stormwater management and habitat for birds, bees, butterflies, and other wildlife. ● Interpretive brochures available on the City’s website will be developed and updated as the forest and meadow plant communities evolve and mature overtime, highlighting the site’s wildlife and plant offerings. ● Additional activities to engage the public include scavenger hunts and hosting an annual butterfly count.
<i>Site Stewardship & Monitoring</i>	Lambertville Goes Wild; Parks and Recreation Commission, and Environmental Commission	Month 16+	<ul style="list-style-type: none"> ● The project partners are committed to the success of this project and understand the importance of adaptive management. As such, project partners will complete monthly walkthrough inspections to monitor invasive species and plant growth. Monthly ‘work days’ will be scheduled to manage invasive species and install vegetation, if necessary. Effort associated with the works includes recruiting, organizing, training, and supervising volunteers.

Monitoring and Measuring Performance:

The three main objectives will be tracked with several performance metrics throughout the grant. The creation of ecological uplift with increased resilience will be tracked through acres of floodplain restored, number of trees planted, and the volume of sediment, phosphorus, and stormwater retained on site. The evaluation of the extent to which the project has engaged the community through design, education, and volunteer opportunities will be conducted by recording the number of residents attending the design charrette and site walk. The public will gain increased public access and passive recreation to the site, which will be measured by the length of trails created on site.

The Project Team has built in some contingencies for delays due to permitting, weather, and scheduling into the project timeline. In terms of budget, the Project Team continues to seek volunteer and in-kind services that will help offset potential cost-overruns.

In addition to overseeing the project during the grant, the City of Lambertville is committed to the long-term viability of this restoration effort. Both city staff and community volunteers will monitor the stream stabilization feature and the planted area, to ensure the design remains intact. The Parks and Recreation Commission will create a manual with procedures for volunteers to effectively monitor the sites. Any issues will be addressed to ensure continued effectiveness. As such, project partners will complete monthly walkthrough inspections to monitor invasive species and plant growth. Monthly ‘work days’ will be scheduled to manage invasive species and install vegetation, if necessary.

Dissemination and Transferability of Results:

The broader goal of the project to address increased storm intensity through ecological uplift and riparian restoration is applicable across the watershed, where many communities lack large open spaces downtown to address stormwater and water quality through natural features. Highly urbanized areas can look to this project as an example of how to enhance wildlife habitat in existing open spaces, even if small in size. Additionally, the objectives to engage the community and restore public access to a newly acquired site will provide lessons learned for any community seeking a similar endeavor. The incorporation of community feedback in the development of the proposed project can serve as a model to other communities on how to best engage community members in project identification and design.

The Project Team intends to share the results of the project in three ways. First, by creating opportunities to engage key regional organizations that work within the Delaware River Watershed, such as the Watershed Institute and the Delaware River Basin Commission, whose knowledge of the project will help disseminate the results through the region. The second method will be the onsite educational signage that allows visitors an understanding of the value and significance of the project. The third method is presenting at regional conferences for organizations such as the annual Watershed Forum hosted by the Coalition for the Delaware River Watershed. Additionally, organizations such as the Watershed Institute and New Jersey American Water Resources Association, have periodic opportunities to present at symposiums and other opportunities to share the project with the broader restoration community and relevant professional disciplines.

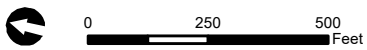
File: P:\0799\Proposals\2023 DWCF\Closson Site\GIS\Project_Context.mxd, 3/6/2023, Drawn by cpalock, Copyright Princeton Hydro, LLC.



NOTES:
 1. Project locations are approximate.
 2. 2020 orthoimagery obtained from NJ Office of Information Technology (NJOT), Office of Geographic Information Systems (OGIS).

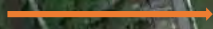
PROJECT CONTEXT

CLOSSON SITE
 NATIONAL FISH AND WILDLIFE FOUNDATION
 DELAWARE WATERSHED CONSERVATION FUND
 CITY OF LAMBERTVILLE
 HUNTERDON COUNTY
 NEW JERSEY

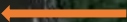


Map Projection: NAD 1983 StatePlane New Jersey FIPS 2900 Feet

City-owned open space, planted 20 trees and 2000 perennials in 2022



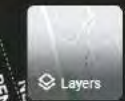
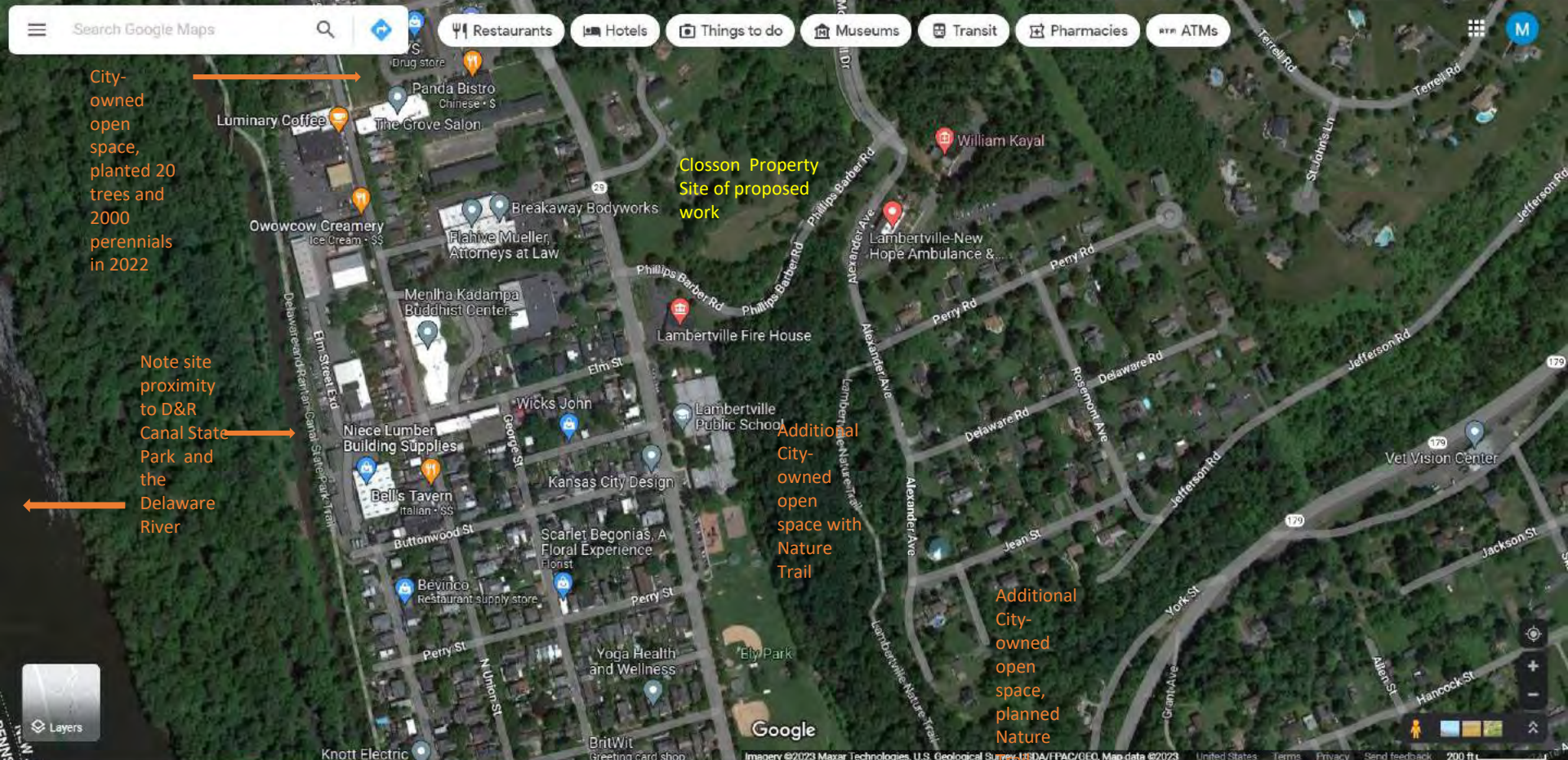
Note site proximity to D&R Canal State Park and the Delaware River

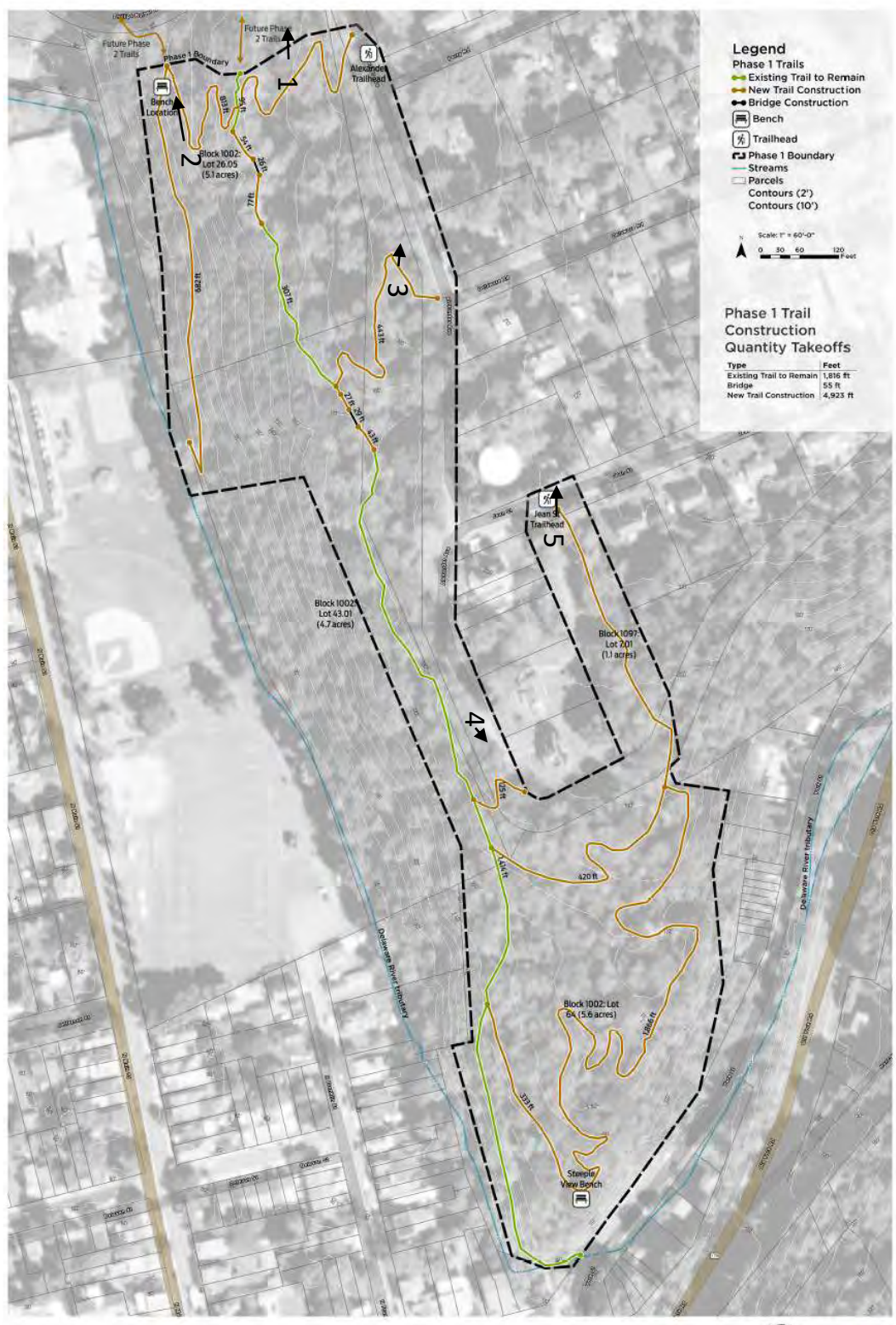


Closson Property Site of proposed work

Additional City-owned open space with Nature Trail

Additional City-owned open space, planned Nature Trail expansion





Lambertville, NJ | Phase 1 Proposed Trail System



Phase 2 connection to Closson property

Lambertville Nature Trail on City-owned open space. This expansion is planned for 2023, funding is secured. Funding is also secured for woodland restoration here including managing invasive species, planting new trees, and cutting down only those Ash trees that are a threat to the Nature Trail, homes, the elementary school or sports fields.



NORTH AMERICAN BUTTERFLY ASSOCIATION

4 Delaware Road, Morristown, NJ 07960 Tel. 973-285-0907 info@naba.org

www.naba.org

National Fish and Wildlife Foundation
1133 Fifteenth St. N.W., Suite 1000
Washington, DC 20005

March 3, 2023

RE: 2022 Delaware Watershed Conservation Fund — Closson Site Restoration

Dear NFWF Selection Committee,

Please accept this letter of support for the "Closson Site Restoration in the Delaware River Basin" project.

The North American Butterfly Association (NABA) enthusiastically supports this project as an important opportunity to provide additional diverse habitat for both resident and migrating butterflies. The Delaware River watershed is a critical migratory route for butterflies, whether flying northward or south, including some butterflies that are trying to extend their range northward.

NABA is a non-profit organization incorporated in 1993 to promote enjoyment and conservation of butterflies. We sponsor annual butterfly counts to monitor butterfly populations throughout North America. We're seeing butterfly population declines across all of the regions we monitor. A recent study published in *Science* magazine found an average population decline of 1.6 percent per year over 40 years for 262 butterfly species, based on data from 72 locations in the western United States. Other studies report that in a similar timeframe, insect mass worldwide has declined by 2.5 percent per year, and bird populations have declined by 29 percent in 50 years.

Lambertville is located in a count circle that encompasses both sides of the Delaware River. This count circle has yielded some very interesting findings, including the Gray Comma, which was reported for the first time in over 50 years. Sleepy Orange, a butterfly that was not previously thought to be able to survive the winters north of North Carolina, was found to have established a reproductive colony in this count circle. A meadow that includes this butterfly's caterpillar food, Wild Senna (*Senna hebecarpa*) would give this butterfly another location to establish a foothold in the north.

The Closson Site Restoration project will provide crucial habitat for butterflies, and many other significant animals in region, both resident and migratory.

On behalf of North American Butterfly Association, we enthusiastically support this vital project, and look forward to having this site included in our upcoming butterfly counts.

Sincerely,

[Stacy Cohen \(Mar 4, 2023 12:23 EST\)](#)

Stacy Cohen
Executive Director

President: Jeffrey Glassberg; Vice-presidents: James Springer, Jeane Wharton; Secretary/Treasurer: Ann James
Directors: Fred Heath, Dennis Olle, Robert Robbins, Patricia Sutton, and aforementioned officers

LTR Support Closson Site 2023

Final Audit Report

2023-03-04

Created:	2023-03-03
By:	Jeane Wharton (wharton@naba.org)
Status:	Signed
Transaction ID:	CBJCHBCAABAAI15Ped2GilckhFKTE9yx0AIK2BMwh7kX

"LTR Support Closson Site 2023" History

-  Document created by Jeane Wharton (wharton@naba.org)
2023-03-03 - 7:52:58 PM GMT
-  Document emailed to cohen@naba.org for signature
2023-03-03 - 7:53:18 PM GMT
-  Email viewed by cohen@naba.org
2023-03-04 - 5:20:37 PM GMT
-  Signer cohen@naba.org entered name at signing as Stacy Cohen
2023-03-04 - 5:23:53 PM GMT
-  Document e-signed by Stacy Cohen (cohen@naba.org)
Signature Date: 2023-03-04 - 5:23:55 PM GMT - Time Source: server
-  Agreement completed.
2023-03-04 - 5:23:55 PM GMT

March 15, 2023

Barbara Griffin Cole
Chair

Shefali Shah
Vice Chair

Enrique Curchitser, PhD
Secretary

Robert H.B. Baldwin, Jr.
Treasurer

Jim Waltman
Executive Director

Board of Trustees

Danielle Bentsen, MD

Robert C. Berness

Ger Brophy, PhD

Jonathan Bryant

Rob Connor, PhD

Silvia Strauss DeBenedetti, PhD

Anna Horner

Ayanna McKay

Alicia Merse

Damon Missouri

Bernadette Woods Placky

Kurt Schulte

Patricia Shanley, PhD

Ari Soroken

Jennifer Staikos

Peter Tovar

Philip Wey, MD

Susannah Wise, MD

Margaret R. Gorrie
Trustee Emeritus

The Watershed Institute
31 Titus Mill Road
Pennington, NJ 08534
609.737.3735
thewatershed.org

National Fish & Wildlife Foundation
1133 Fifteenth Street N.W., Suite 100
Washington, DC 20005

RE: 2022 Delaware Watershed Conservation Fund – Clossen Site Restoration

Dear NFWF Selection Committee,

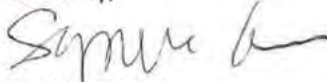
The Watershed Institute is pleased to provide a letter of support for the “Clossen Site Restoration in the Delaware River Basin” project. We are a 501(c)(3) nonprofit based in central New Jersey. Keeping water clean, safe and healthy is the heart of our mission and we work to protect and restore the water and natural environment in central New Jersey through conservation, advocacy, science and education.

We have worked closely with the Environmental Commission and the schools in Lambertville, and witnessed firsthand the serious problem that flooding poses to this community. This project offers an important opportunity to manage floodwaters, improve water quality, stabilize a perennial stream, and build ecological resilience within a subwatershed of the Delaware River.

The plan will also improve wildlife habitat through the creation of a riparian forest, early succession habitat and a meadow. We would be an enthusiastic partner in the work of engaging the community and educating about the benefits of these actions. Public access to a passive nature-based area accessible to all residents is another important aspect of this project.

We strongly support the Clossen Site Restoration project, and urge you to select it for funding. It will be an excellent model to other communities seeking to find ways to use green infrastructure to manage stormwater while providing new wildlife habitat and nature-based recreation opportunities for residents.

Sincerely,



Sophie Glover
Chief of Operations

City of Lambertville is proud to partner with a variety of nonprofit organizations and consultants on this project. The project partners and in-kind contributors have once again pledged their support, time, and/or effort to the proposed project. Because the intent, goals, and scope of the proposed project have not changed from last year, we have included letters received for last year's submission.

Project Partners & In-kind Contributors

- Parks and Recreation Commission, City of Lambertville
- Environmental Commission, City of Lambertville
- Lambertville Goes Wild
- Princeton Hydro

Project Supporters

- Delaware River Basin Commission
- Fisherman's Mark
- Office of Emergency Management, City of Lambertville
- The Nature Conservancy
- FoHVOS New Jersey Invasive Species Strike Team
- Green Acres Program, New Jersey Department of Environmental Protection
- West Amwell Township
- New Jersey Conservation Foundation
- Sourland Conservancy
- Splash
- Washington Crossing Audubon Society
- North American Butterfly Association (uploaded separately)

City of Lambertville



Benedetta Lambert
Councilwoman

Steve Stegman
Council President

Andrew J. Nowick
Mayor

Karen J. Kominsky
Councilwoman

March 8, 2023

National Fish and Wildlife Foundation
1133 Fifteenth St. N.W., Suite 1000
Washington, DC 20005
T 202-857-0166 | F 202-857-0162

Dear NFWF Selection Committee,

In May of 2021, the City of Lambertville acquired the Closson Farm, which had been in the same family since John Holcombe purchased it as part of a six-hundred-acre tract in 1705. For over three centuries, Holcombe's direct descendants lived at the farm: there is the Holcombe house, aka Washington's Headquarters, built about 1724, several barns of the same era, a more recent log cabin home, and a farm market. All this set on 8.49 acres of rolling hills with a creek running west to the Delaware River. Cow Hill, just below the Holcombe house, has been the sledding destination for generations of local children.

The City purchased the property not only to preserve the exceptionally fine historic buildings, but also to protect the viewshed and to create an open space resource for the community. Before I was elected mayor, I served on the Lambertville Community Advisory Team (CAT) which sought public input for uses of the Closson Site. The CAT spent months gathering feedback, and what you see in our application reflects what the community wanted: a gathering space with walking paths, wildflower meadows, and various educational components. The CAT also noted a "strong emphasis on using the site for flood/climate change mitigation."

Since those findings, Hurricane Ida wrought incredible damage to our City. What was a narrow burbling creek on the Closson Farm was badly marred. Debris crashed down the hills in torrents of water, severely eroding the creek and undercutting its banks. Indeed, all our waterways suffered significant damage. Two creeks (Swan and Ely) have undergone a 1.8-million-dollar stabilization project this past year funded in large part by a USDA/NRCS grant. A third creek, the C-1 designated Alexauken was also seriously damaged, and we have a permit pending with NJDEP for debris removal. This work should be done by summer of 2023.

City of Lambertville



Benedetta Lambert
Councilwoman

Steve Stegman
Council President

Andrew J. Nowick
Mayor

Karen J. Kominsky
Councilwoman

National Fish and Wildlife Foundation
1133 Fifteenth St. N.W., Suite 1000
Washington, DC 20005
T 202-857-0166 | F 202-857-0162

Page 2

While we spent the last fourteen months stabilizing our creeks and repairing our infrastructure, we simultaneously began to expand our mitigation and resiliency efforts. The restoration of the Closson site will be a key element in our plan. This project will provide an excellent opportunity to educate residents about natural methods to mitigate stormwater runoff while offering a wonderful and historic setting in which to enjoy our natural resources and our community.

I couldn't be more excited about the prospect of this grant. Working with our partners at Princeton Hydro, Envirosapes, and Lambertville Goes Wild, we will create a place of natural beauty and sustainability that will be cherished by generations of Lambertvillians. With much gratitude to the NFWF Selection Committee for your consideration of our application, I remain,

Sincerely yours,

Andrew J. Nowick, Mayor

City of Lambertville



Benedetta Lambert
Councilwoman

Steve Stegman
Council President

Andrew J. Nowick
Mayor

Karen J. Kominsky
Councilwoman

Evan J. Lide
Councilman

March 8, 2023

To Whom It May Concern:

The City of Lambertville will provide a cash match of \$25,000 to the NFWF Delaware River Program Delaware Watershed Conservation Fund Grant through funds received from the County of Hunterdon's Open Space Fund. Additionally, we also plan to use in-kind contributions totaling \$19,900 of city staff time.

I can be reached at 609-397-0110, ext. 11 should you have any questions or require additional information.

Sincerely,

A handwritten signature in blue ink, which appears to read "Cynthia L. Ege". The signature is fluid and cursive.

Cynthia L. Ege
CMR, RMC, City Clerk

Lambertville Parks & Recreation Commission
18 York Street
Lambertville, NJ 08530

National Fish and Wildlife Foundation
1133 Fifteenth St. N.W., Suite 1000
Washington, DC 20005
T 202-857-0166 | F 202-857-0162

March 31, 2022

RE: 2022 Delaware Watershed Conservation Fund — Closson Site Restoration

Dear NFWF Selection Committee,

Please accept this letter of support for the “Closson Site Restoration in the Delaware River Basin” project. The Lambertville Parks & Recreation Commission fully supports this project as an opportunity to create connected public trails on the City’s largest remaining undeveloped parcel, stabilize a perennial stream, and build ecological resilience within a subwatershed of the Delaware River.

The Parks & Recreation Commission oversees operations and maintenance of our parks, while also offering recreational events and activities for our community at large. We are entrusted by our community to tend our natural open space, and we do so by honoring shared values of sustainability, natural habitat encouragement, low fossil fuel footprint and community stewardship and enjoyment of the outdoors.

We understand the benefits to our residents of having ready access to nature. This nature-based project will provide new hiking trails right in the City where residents can learn about the value of native plants to the birds, butterflies, bees and other wildlife that share our environment. Residents will also be able to see the benefits that accrue to humans, especially as this project helps to mitigate the possibility and severity of flooding from the hillside. The Parks and Recreation Commission is excited to be able to offer this nature-based recreational and educational opportunity for our residents.

The Lambertville Parks & Recreation Commission is committed to contribute the following services to this effort totaling \$95,500 of in-kind match:

- manage public meetings to solicit input from the community on the project
- lead guided walks on the site
- provide tree and shrub saplings (via Sourland Conservancy)
- help plant new trees and shrubs
- help remove invasive species
- recruit, train and supervise volunteers to help with invasive species removal and planting new trees and shrubs.

Lambertville Parks & Recreation Commission
18 York Street
Lambertville, NJ 08530

- manage the City of Lambertville resources that are essential to the project
- manage the ongoing maintenance for the property

On behalf of the Lambertville Parks & Recreation Commission, we look forward to working with project partners and the community to restore the Closson Site.

Sincerely,

Mary Anne Borge

Mary Anne Borge

Chair, Lambertville Parks & Recreation Commission

Lambertville Environmental Commission

National Fish and Wildlife Foundation
1133 Fifteenth St. N.W., Suite 1000
Washington, DC 20005
T 202-857-0166 | F 202-857-0162

March 30, 2022

RE: 2022 Delaware Watershed Conservation Fund — Closson Site Restoration

Dear NFWF Selection Committee,

Please accept this letter of support for the “Closson Site Restoration in the Delaware River Basin” project. The City of Lambertville fully supports this project as an opportunity to create connected public trails on the City’s largest remaining undeveloped parcel, stabilize a perennial stream, and build ecological resilience within a subwatershed of the Delaware River.

Lambertville continues to lead the way on protecting the environment, setting an example for other cities and towns through effective ways to forge a green future. The Environmental Commission is integral to these efforts, providing innovative, cutting-edge recommendations to the Mayor and Council and educating the public about the environmental challenges facing the City. The Environmental Commission is committed to supporting the City with community outreach and volunteer efforts to ensure the successful implementation of this grant; as such we are providing \$40,000 of in-kind services.

On behalf of the City of Lambertville, we look forward to working with project partners and the community to restore the Closson Site.

Sincerely,

Elizabeth Peer

Chair, Lambertville Environmental Commission



National Fish and Wildlife Foundation
1133 Fifteenth St. N.W., Suite 1000
Washington, DC 20005
T 202-857-0166 | F 202-857-0162

March 31, 2022

RE: 2022 Delaware Watershed Conservation Fund — Closson Site Restoration

Dear NFWF Selection Committee,

Please accept this letter of support for the “Closson Site Restoration in the Delaware River Basin” project. Lambertville Goes Wild fully supports this project as an opportunity to create connected public trails on the City’s largest remaining undeveloped parcel, stabilize a perennial stream, and build ecological resilience within a subwatershed of the Delaware River.

Lambertville Goes Wild is a volunteer organization whose mission is to provide education about the importance of native plants to all life, and about other sustainable gardening practices. In 2019 we successfully led the City of Lambertville to certification by the National Wildlife Federation as a Community Wildlife Habitat.

This nature-based project will have a beneficial effect on wildlife habitat, provide new hiking trails in the City where residents can learn about the value of native plants, and will also help minimize the possibility and effects of flash flooding from the hillside. Flash flooding from this creek contributed to devastating flooding in the City last September. With the increase in extreme weather resulting from climate change, this type of event will become more frequent. We need to do everything we can to make the City more resilient.

Lambertville Goes Wild is committed to contribute the following services to this effort totaling \$98,100 of in-kind match:

- landscape design
- design interpretive signs
- develop interpretive brochures and scavenger hunts
- lead guided walks on the site
- help plant new trees and shrubs



- help remove invasive species
- recruit, train and supervise volunteers to help with invasive species removal and planting new trees and shrubs.

On behalf of the Lambertville Goes Wild, we look forward to working with project partners and the community to restore the Closson Site.

Sincerely,

Mary Anne Borge

Mary Anne Borge

Team Leader, Lambertville Goes Wild

National Fish and Wildlife Foundation
1133 Fifteenth St. N.W., Suite 1000
Washington, D.C. 20005

March 8, 2023

Dear NFWF Selection Committee,

On behalf of Princeton Hydro, we are writing in support of City of Lambertville's grant application to the National Fish and Wildlife Foundation's 2023 Delaware River Program Delaware Watershed Conservation Fund for the "Closson Site Restoration in the Delaware River Basin" project. Princeton Hydro is a water resources engineering and natural resource management firm committed to improving our ecosystems, quality of life, and communities.

Princeton Hydro has partnered with the City of Lambertville to enhance the recently acquired Closson Farm property in the Ely Creek Watershed within the Lower Central Sub-watershed of the Delaware River Basin. The project area is a 4.6-acre undeveloped parcel and presents the rare opportunity in a densely developed town to mitigate flooding; decrease stormwater runoff volume and pollution; and create wildlife habitat, while also providing public access and passive recreation. These objectives were identified as key priorities by the community during pre- and post- acquisition outreach.

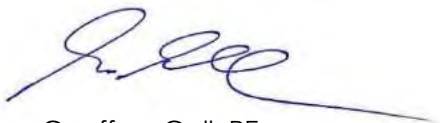
The broader goal of the project is applicable across the watershed where many communities lack large open spaces to address flood mitigation, stormwater volume, and water quality through natural features. The objectives to engage the community and restore public access to a newly acquired site will provide lessons learned for any community seeking a similar endeavor.

For this grant project, the City of Lambertville has partnered with Princeton Hydro and our subcontractor Enviroscapes to design and construct the restoration of a riparian forest and floodplain, as well as the stabilization of a tributary of the Delaware River. The total fee for Princeton Hydro and Enviroscapes to manage the project, conduct field activities and modeling, produce the engineering plans, acquire necessary permits, implement the design, conduct outreach, and support the City in administering the grant is \$322,184.

Our firm is committed to giving back to our local community and supporting the City of Lambertville and project partners. Because of this, our consultant rates and associated fees provided above have been discounted for this project. The difference between our actual cost and discounted costs equates to an in-kind donation of \$34,400.

If you have any questions or would like more information, I can be reached at ggoll@princetonhydro.com or 609-915-9425.

Sincerely,



Geoffrey Goll, PE
President
Princeton Hydro, LLC



Delaware River Basin Commission

25 Cosey Road
PO Box 7360
West Trenton, New Jersey
08628-0360
Phone: (609) 883-9500 Fax: (609) 883-9522
Web Site: <http://www.drbc.gov>

Steven J. Tambini, P.E.
Executive Director

March 31, 2022

Ms. Rachel Dawson
Program Director, Delaware River
National Fish and Wildlife Foundation
1133 Fifteenth Street NW, Suite 1000
Washington, DC 20005

Dear Ms. Dawson,

The Delaware River Basin Commission (DRBC) is writing to support the proposal of Lambertville, NJ to the Delaware Watershed Conservation Fund (DWCF), *Closson Site Restoration in the Delaware River Basin* (#75345).

The city is applying to restore riparian area and floodplain and stabilize a tributary to the Delaware River that was impacted by Hurricane Ida. The project site represents one of the last undeveloped sites in one of the country's most iconic river towns, and offers a rare opportunity to mitigate flooding, decrease stormwater runoff volume, decrease nitrogen, phosphorus, and sediment pollutant loading to the tributary and thus improve the water quality of the Delaware River, while providing public access and passive recreation.

If awarded, these grant funds will allow the city to leverage this property to proactively address the stability of a channel vulnerable to high flows from intense rain events while creating ecological enhancement within the watershed.

The project will have environmental, social, and economic benefits for the community including stream bank stabilization, sediment control, runoff flow reduction, and improved public access. The project will enhance 4.5 undeveloped acres following significant storm damage in 2021.

Additionally, the city plans to engage the community as partners in the design-build process, and to create post-construction education through interpretive signage and create year-round public access and connectivity to existing community walking paths.

The DRBC's mission is to manage, protect and improve the water resources of the Delaware River Basin. For many years, DRBC has participated in Lambertville's Shad Fest and understands the vital role river towns like Lambertville play in anchoring economic vitality, enhancing ecological awareness and connecting the public to our shared water resources. The DRBC strongly supports this proposal and recommends you consider this project for funding.

Sincerely,

A handwritten signature in black ink, appearing to read 'Stambini', is written over a light blue circular stamp.

Steven J. Tambini
Executive Director



National Fish and Wildlife Foundation
1133 Fifteenth St. N.W., Suite 1000
Washington, DC 20005
T 202-857-0166 | F 202-857-0162

March 31, 2022

RE: 2022 Delaware Watershed Conservation Fund — Closson Site Restoration

Dear NFWF Selection Committee,

Please accept this letter of support for the “Closson Site Restoration in the Delaware River Basin” project. The City of Lambertville fully supports this project as an opportunity to create connected public trails on the City’s largest remaining undeveloped parcel, stabilize a perennial stream, and build ecological resilience within a subwatershed of the Delaware River.

Fisherman’s Mark is a 501c3 organization serving all of Hunterdon County and parts of Bucks County. Fisherman’s Mark has been a part of the community for over 42 years, providing not only services that meet basic needs, such as food and affordable childcare, but going beyond crisis to partner with individuals and families to break the cycle of crisis and promote self-sufficiency and wellness. Fisherman’s Mark is committed to assisting this project as a community partner with the City of Lambertville.

On behalf of the City of Lambertville, we look forward to working with project partners and the community to restore the Closson Site.

Sincerely,

A handwritten signature in blue ink, appearing to read "Jennifer Williford", is written over a horizontal blue line that serves as a baseline for the signature.

Jennifer Williford
Executive Director
Fisherman’s Mark



City of Lambertville

18 York Street
Lambertville, NJ 08530
609-397-0110
www.lambertvillenj.org

Andrew J. Nowick
Mayor

Julia Taylor
Council President

Benedetta Lambert
Councilwoman

Wardell Sanders
Councilman

Steve Stegman
Councilman

National Fish and Wildlife Foundation
1133 Fifteenth St. N.W., Suite 1000
Washington, DC 20005
T 202-857-0166 | F 202-857-0162

March 29, 2022

RE: 2022 Delaware Watershed Conservation Fund — Closson Site Restoration

Dear NFWF Selection Committee,

Please accept this letter of support for the "Closson Site Restoration in the Delaware River Basin" project. The City of Lambertville's Office of Emergency Management fully supports this project as an opportunity to create connected public trails on the City's largest remaining undeveloped parcel, stabilize a perennial stream, and build ecological resilience within a sub watershed of the Delaware River.

This project will help to mitigate damages from heavy rains; stabilize Ely Creek which was damaged during Hurricane Ida; and help to make Cow Hill and our Park at the Closson Property hardy for years to come.

On behalf of the Office of Emergency Management of the City of Lambertville, we look forward to working with project partners and the community to restore the Closson Site.

Sincerely,

Robert Brown, Lieutenant and Officer in Charge
Lambertville Police Department, OEM Coordinator
City of Lambertville



The Nature Conservancy in New Jersey
Elizabeth D. Kay Environmental Center
200 Pottersville Road
Chester, NJ 07930

tel [908] 879-7262
fax [908] 879-2172
nature.org/newjersey

National Fish and Wildlife Foundation
1133 Fifteenth St. N.W., Suite 1000
Washington, DC 20005
March 28, 2022

RE: 2022 Delaware Watershed Conservation Fund / Closson Site Restoration
Dear NFWF Selection Committee,

Please accept this letter of support for the “Closson Site Restoration in the Delaware River Basin” project. The Nature Conservancy fully supports this project as an opportunity to create connected public trails on the City’s largest remaining undeveloped parcel, stabilize a perennial stream, and mitigate local flooding within a subwatershed of the Delaware River.

The Nature Conservancy uses science and collaborative approaches to achieve lasting results and is a leader in conservation planning and science, natural areas restoration/management, and community-based conservation. Both around the globe and in New Jersey, we are working to protect and restore rivers, lakes, and watersheds; transform the way river systems are managed and developed; and inspire people to get involved in freshwater conservation.

We support The City of Lambertville’s use of funding from the Delaware Watershed Conservation Fund to restore 4.5 acres of riparian area and floodplain and stabilize a tributary to the Delaware River.

Sincerely,
Beth Styler Barry
Director of River Restoration
The Nature Conservancy



FoHvos New Jersey Invasive Species Strike Team

March 29, 2022

National Fish and Wildlife Foundation
1133 Fifteenth St. N.W., Suite 1000
Washington, DC 20005
T 202-857-0166 | F 202-857-0162

RE: 2022 Delaware Watershed Conservation Fund — Closson Site Restoration

Dear NFWF Selection Committee,

Please accept this letter of support for the “Closson Site Restoration in the Delaware River Basin” project. The New Jersey Invasive Species Strike Team fully supports this project as an opportunity to create connected public trails on the City’s largest remaining undeveloped parcel, stabilize a perennial stream, and build ecological resilience within a subwatershed of the Delaware River.

The Strike Team’s mission to protect New Jersey’s natural lands has remained the same since 2008. We serve the conservation community statewide through our dedicated focus on mitigating threats posed by invasive species. Our partners include federal, state, county and municipal governments, conservation groups, private landowners and the general public including volunteer groups dedicated to protecting private property and local parks. We provide a clearinghouse of invasive species knowledge and tools and actively offer training and outreach that reaches up to 2,000 professionals and laymen every year. The Strike Team and our partners detect and eliminate invasive species by mapping them using our phone app and track efforts with our statewide database. Since inception, we have searched 800,000 acres, documented 20,000 invasive populations, and eliminated 5,000 of them.

We look forward to working with the City of Lambertville and the community to restore the Closson Site.

Sincerely,

Michael Van Clef, Ph. D.
Strike Team Program Director

Steering Committee

Kristen Meistrell
New Jersey Audubon

Dr. Emile Devito
*New Jersey
Conservation Foundation*

Kenneth H. Klipstein, II
*New Jersey Water
Supply Authority*

Dr. Michael Van Clef
*Friends of Hopewell
Valley Open Space*

Lisa Wolff
*Friends of Hopewell
Valley Open Space*

Technical Advisory Committee

Thom Almendinger
Duke Farms

Michele Bakacs
*New Jersey Division
of Fish & Wildlife*

Kerry Barringer
*Flora of North
America Association*

Heather Corbett
NJ Bureau of Marine Fisheries

Chris Doyle
Limnologist

Art Gover
*The Pennsylvania
State University*

Rachel Mackow
Wild Ridge Plants

Christopher Smith
*New Jersey Division
of Fish & Wildlife*

Robert Somes
*New Jersey Division
of Fish & Wildlife*

Carole Stanko
*New Jersey Division
of Fish & Wildlife*

Rosa Yoo
*New Jersey Department
of Agriculture*

Staff

Lisa Wolff
Executive Director

Dr. Michael Van Clef
Program & Stewardship Director

Beth Craighead
Land Steward

Brian Kubin
Land Steward

Dana Christensen
Land Steward

Cory Snyder
Land Steward

Leslie Kuchinski
Operations Manager

Richele Lieboff
Outreach Manager

New Jersey Invasive Species Strike Team

A program of Friends of Hopewell Valley Open Space

P.O. Box 395 | Pennington, New Jersey 08534 | 609.730.1560 | fohvos.org/invasive-species-strike-team



State of New Jersey

DEPARTMENT OF ENVIRONMENTAL PROTECTION

GREEN ACRES PROGRAM

401 East State Street

P.O. Box 420, Mail Code 401-07B

Trenton, New Jersey 08625-0420

Tel. (609) 984-0500 • Fax (609) 984-0608

www.nj.gov/dep

PHILIP D. MURPHY

Governor

SHEILA Y. OLIVER

Lt. Governor

SHAWN M. LATOURETTE

Commissioner

March 31, 2022

National Fish and Wildlife Foundation
1133 Fifteenth St, N.W. Suite 1000
Washington, DC 20005

Re: 2022 Delaware Watershed Conservation Fund – Closson Site Restoration

Dear NFWF Selection Committee

The New Jersey Department of Environmental Protection Green Acres Program enthusiastically supports the City of Lambertville's application to the National Fish and Wildlife Foundation (NFWF) Delaware Watershed Conservation 2022 Grant program. Last year, Green Acres approved funding to the City of Lambertville for the acquisition of the former Closson property, the same property for which the City is pursuing the NFWF's stewardship grant funds.

The NFWF stewardship funding would allow for an important and valuable next step for the City to realize their vision for enhancing the natural resources of the property and allowing public access and educational opportunities to the property. Green Acres supports the City of Lambertville's NFWF application, with the condition that the project meets all applicable State and Federal laws, including the New Jersey Register of Historic Places Act (N.J.S.A. 13:1B-15-128 et seq.)

Feel free to reach out to me if you have any questions

Sincerely,

Martha Sullivan Sapp
Director



West Amwell Township
150 Rocktown-Lamb. Road, Lambertville, New Jersey 08530-3203
(609) 397-2054 (609) 397-8634 FAX
www.westamwelltp.org

March 23, 2022

National Fish and Wildlife Foundation
1133 Fifteenth St. N.W., Suite 1000
Washington, DC 20005
T 202-857-0166 | F 202-857-0162

Re: 2022 Delaware Watershed Conservation Fund – Closson Site Restoration

Dear NFWF Selection Committee,

Please accept this letter of support for the “Closson Site Restoration in the Delaware River Basin” project. West Amwell Township supports Lambertville City’s endorsement of this project as an opportunity to create connected public trails on Lambertville City’s largest remaining undeveloped parcel, stabilize a perennial stream, and build ecological resilience within a subwatershed of the Delaware River.

On behalf of the City of Lambertville, we look forward to working with project partners and the community to restore the Closson Site.

Sincerely,


Maria Andrews, Township Clerk, RMC



New Jersey Conservation
F O U N D A T I O N

National Fish and Wildlife Foundation
1133 Fifteenth St. N.W., Suite 1000
Washington, DC 20005
T 202-857-0166 | F 202-857-0162

April 14, 2022

RE: 2022 Delaware Watershed Conservation Fund — Closson Site Restoration

Dear NFWF Selection Committee,

Please accept this letter of support for the “Closson Site Restoration in the Delaware River Basin” project. New Jersey Conservation Foundation fully supports this project as an opportunity to create connected public trails on the City’s largest remaining undeveloped parcel, stabilize a perennial stream, and build ecological resilience within a subwatershed of the Delaware River.

The Closson Site is one of the few open spaces in the city and enhancing public access will be critical. It is located on the western edge of the city, above the flood plane where Storm Ida caused the majority of its flooding in Lambertville. The proposed project will be a great benefit to the city and the Delaware watershed by providing resiliency in a vulnerable flood zone. We look forward to working with project partners and the community to restore the Closson Site.

Sincerely,

Alix Bacon

Regional Manager, NJ Conservation Foundation

National Fish and Wildlife Foundation
1133 Fifteenth St. N.W., Suite 1000
Washington, DC 20005



March 1, 2023

RE: 2022 Delaware Watershed Conservation Fund — Closson Site Restoration

Dear NFWF Selection Committee,

Please accept this letter of support for the “Closson Site Restoration in the Delaware River Basin” project. Sourland Conservancy fully supports this project as an important opportunity to help mitigate the devastating effects of the Emerald Ash Borer (EAB) in our region, and to provide additional diverse habitat for both resident and migrating birds, butterflies, bees, and other wildlife, as well as educational and recreational opportunities for residents.

Sourland Conservancy is a non-profit organization whose mission is to protect, promote and preserve the Sourland Mountain region’s history and ecology, especially through stewardship of natural resources and advocacy through effective citizen action. The mosaic habitats of the Sourlands are host to an incredibly rich diversity of animal and plant species, many rare or endangered. Biological diversity is a reflection of the health of an ecosystem. Many Sourland region species rely on both the quantity and the quality of the forest and understory. One of three major areas of unbroken habitat in the state, midway between the Highlands and the Pinelands, this is a critical stopover point for birds migrating along the Atlantic flyway and is one of New Jersey’s top fall migration stopover sites. The Closson Site Restoration project will provide important habitat connectivity for birds, bees, butterflies, and many other important animals of the Sourland region.

At least twenty percent of the trees in our region will die or have already died because of the invasive Emerald Ash Borer. We are currently engaged in a project to plant thousands of trees in the Sourlands to restore habitat, reduce flooding, and improve riparian buffers. Lambertville is an essential part of both the Sourlands and the Delaware River ecosystems. We are committed to providing and planting 300 trees and shrubs for this project, with the assistance of community volunteers. Each tree will be protected from deer herbivory, and our volunteers will perform annual maintenance for a minimum of five years.

On behalf of Sourland Conservancy, we look forward to working with the City of Lambertville, the Parks & Recreation and Environmental Commissions, Lambertville Goes Wild, and other partners on this important project.

Sincerely,

Laurie Cleveland, Executive Director



SPLASH Delaware River Floating Classroom
is a 501 (c)(3) educational non-profit organization

www.splashclassroom.org

National Fish and Wildlife Foundation
1133 Fifteenth St. N.W., Suite 1000
Washington, DC 20005

T 202-857-0166 | F 202-857-0162

March 7, 2023

RE: 2022 Delaware Watershed Conservation Fund — Closson Site Restoration

Dear NFWF Selection Committee,

Please accept this letter of support for the “Closson Site Restoration in the Delaware River Basin” project. SPLASH Delaware River Floating Classroom fully supports this project as an important opportunity to manage floodwaters, improve water quality, and stabilize a perennial stream, and build ecological resilience within a sub watershed of the Delaware River.

SPLASH Delaware River Floating Classroom is a non-profit organization whose mission is to educate and inspire through accessible aquatic-based experiential learning and citizen science on the Delaware River and its shores. SPLASH stands for Student Participation in Learning Aquatic Science & History. Since 2004 SPLASH has delighted school-age and adult groups with educational sails on the beautiful Delaware River from Lambertville, NJ. Educational programs are also offered at the D&R Canal State Park in Lambertville, as well as at nearby client sites. Educational programs include: Watershed Stewardship with the Enviroscape; Phytoplankton: Jewels of the River; Macroinvertebrates as indicators of Water Quality; Basic Birding and many other fun, engaging programs. In addition, SPLASH Citizen Scientists sample monthly 4 Lambertville sites (tributaries Swan and Alexauken Creeks and the main stem Delaware River), as part of the Stream Watch program of The Watershed Institute.

We support the goals of the Closson Site Restoration project, and urge you to select it for funding. It will be of benefit to manage and purify storm water while providing new wildlife habitat, and nature-based recreational opportunities for residents.

Sincerely,

A handwritten signature in black ink, appearing to read "Eric Clark".

Eric Clark
Executive Director
SPLASH Delaware River Floating Classroom



PO Box 112, Pennington, NJ 08534

National Fish and Wildlife Foundation
1133 Fifteenth St. N.W., Suite 1000
Washington, DC 20005
T 202-857-0166 | F 202-857-0162

March 7, 2023

RE: 2022 Delaware Watershed Conservation Fund — Closson Site Restoration

Dear NFWF Selection Committee,

Please accept this letter of support for the “Closson Site Restoration in the Delaware River Basin” project. The Washington Crossing Audubon Society fully supports this project as an important opportunity to provide additional diverse habitat for both resident and migrating birds, as well as for important pollinators and other wildlife. Lambertville is part of two Important Bird Areas as designated by the National Audubon Society, both the Sourland Mountain region and the Delaware & Raritan Canal. This area is a critical stopover point for birds migrating along the Atlantic flyway.

Washington Crossing Audubon Society (WCAS) is a non-profit organization dedicated to the enjoyment and protection of birds, wildlife, and the environment through education, research, and conservation. WCAS is the local chapter of the National Audubon Society in central New Jersey, encompassing all of Mercer County and parts of Burlington, Hunterdon, and Somerset Counties. Since 1979 WCAS has been an active voice in local conservation issues, countering development initiatives and speaking out for the protection and stewardship of our cherished preserved open spaces. Experienced WCAS officers and affiliates lead birding field trips to some of the region’s best birding locations, and co-sponsor many other field trips with partnership organizations.

We enthusiastically support this project, and we are committed to offering guided bird walks at the site. On behalf of Washington Crossing Audubon Society, we look forward to working with the City of Lambertville, the Parks & Recreation and Environmental Commissions, Lambertville Goes Wild and other partners on this important project.

Sincerely,

Jim R. Myers

President, Washington Crossing Audubon Society

File: C:\Users\cpollack\Desktop\NFWF_South_River\Restoration_Plan_Closson_Site.mxd, 3/18/2022, Drawn by cpollack, Copyright Princeton Hydro, LLC.

Stabilize widening/
downcutting channel
and eroding banks

Create subtle ground
depressions to retain
and infiltrate stormwater

Legend

-  Restoration Area (4.6 ac)
- Restoration Concept Features**
-  Early Succession (1.5 ac)
-  Riparian Forest (2.0 ac)
-  Wildflower Meadow (1.1 ac)
-  Stream Stabilization (700 LF)
-  Mowed Walking Trail (1,200 LF)
-  Educational Sign

NOTES:
 1. Restoration concept features are approximate.
 2. 2020 orthoimagery obtained from NJ Office of Information Technology (NJ OIT), Office of Geographic Information Systems (OGIS).



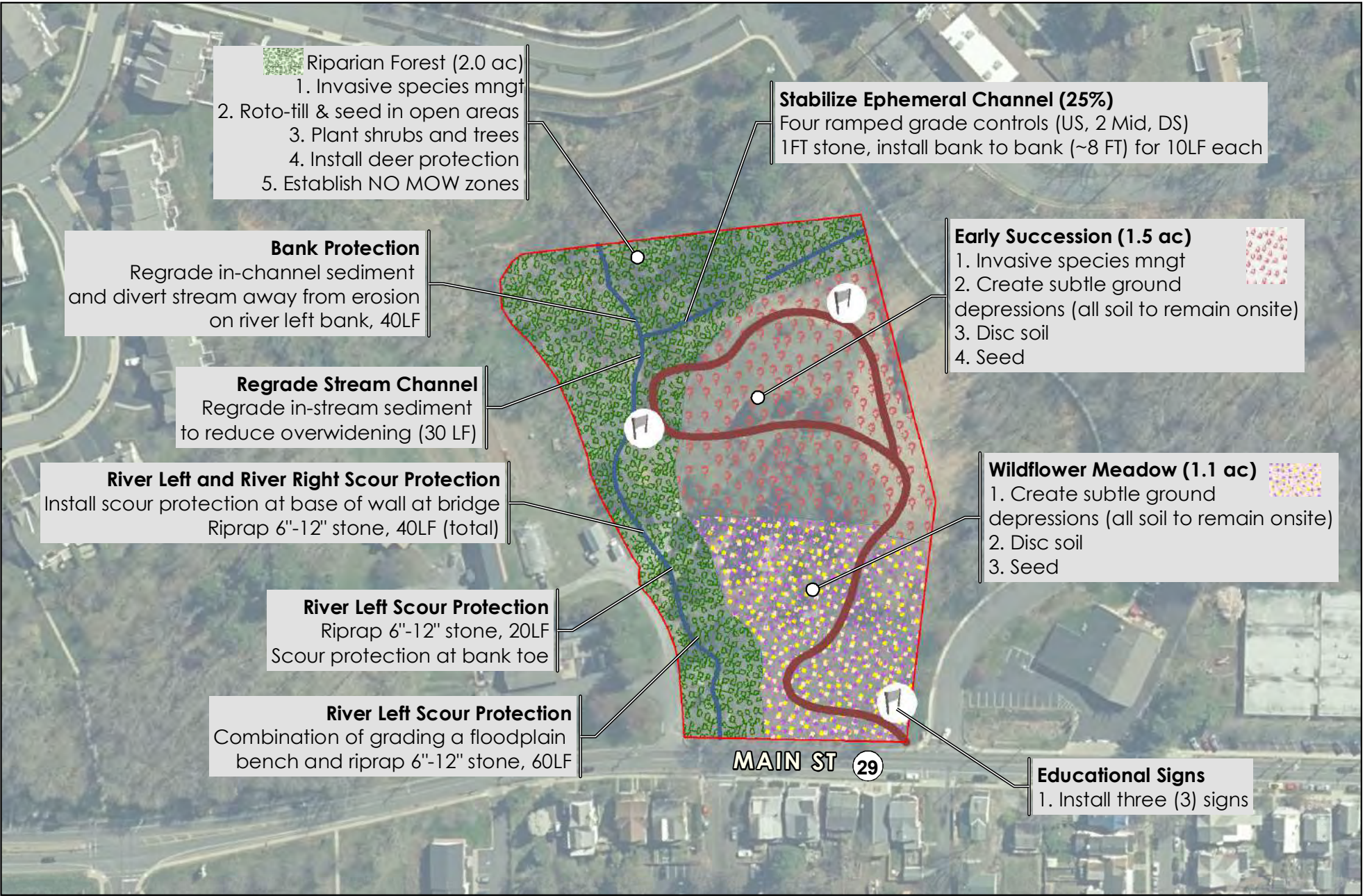
RESTORATION CONCEPT

CLOSSON SITE
 NATIONAL FISH AND WILDLIFE FOUNDATION
 DELAWARE WATERSHED CONSERVATION FUND
 CITY OF LAMBERTVILLE
 HUNTERDON COUNTY
 NEW JERSEY



PRINCETON HYDRO
 SCIENCE DESIGN ENGINEERING
www.PrincetonHydro.com

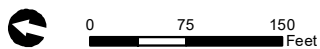
File: P:\0799\Proposals\Closson_Site\GIS\MXD\Restoration_Plan_Classon_Site_Construction_Details.mxd, 3/23/2022, Drawn by cpollack, Copyright Princeton Hydro, LLC.



NOTES:
 1. Restoration concept features are approximate.
 2. 2020 orthoimagery obtained from NJ Office of Information Technology (NJ OIT), Office of Geographic Information Systems (OGIS).

RESTORATION - CONSTRUCTION DETAILS

CLOSSON SITE
 NATIONAL FISH AND WILDLIFE FOUNDATION
 DELAWARE WATERSHED CONSERVATION FUND
 CITY OF LAMBERTVILLE
 HUNTERDON COUNTY
 NEW JERSEY



Map Projection: NAD 1983 StatePlane New Jersey FIPS 2900 Feet









NFWF

Statement of Litigation

Instructions: Save this document on your computer and complete. The final narrative should not exceed two (2) pages; do not delete the text provided below. Once complete, upload this document into the on-line application as instructed.

Litigation: In the space provided below, state any litigation (including bankruptcies) involving your organization and either a federal, state, or local government agency as parties. This includes anticipated litigation, pending litigation, or litigation completed within the past twelve months. Federal, state, and local government applicants are not required to complete this section. If your organization is not involved in any litigation, please state below.

The City of Lambertville is a local government entity, and is therefore not required to complete this section.



NFWF

Statement Addressing Board of Directors

The City of Lambertville does not have a Board of Directors, Trustees, or Equivalent.

APPLICANT CONTROLS AND CAPABILITIES QUESTIONNAIRE



INSTRUCTIONS: THIS QUESTIONNAIRE IS REQUIRED WITH THE SUBMISSION OF A NFWF FULL PROPOSAL, FOR THE FOLLOWING ORGANIZATION TYPES: NONPROFIT ORGANIZATIONS, STATE, LOCAL & MUNICIPAL GOVERNMENTS, INDIAN TRIBAL GOVERNMENTS, FOR-PROFIT ENTITIES, AND INCORPORATED INDIVIDUALS. PLEASE COMPLETE AND SIGN THE QUESTIONNAIRE IF YOUR ORGANIZATION DOES NOT HAVE A RECENT (WITHIN TWO YEARS) SINGLE AUDIT UPLOADED TO THE FEDERAL AUDIT CLEARINGHOUSE. DO NOT INCLUDE COPIES OF POLICIES OR PROCEDURES WITH THE SUBMISSION OF THIS FORM.

NFWF UTILIZES THIS QUESTIONNAIRE ALONG WITH A RISK ASSESSMENT TO DETERMINE ELIGIBILITY AND COMPLIANCE REQUIREMENTS, WHICH MAY INCLUDE THE FOLLOWING: ADDITIONAL REPORTING, RESTRICTION OF ADVANCE FUNDING, AND/OR SUBMISSION OF SUPPORTING DOCUMENTATION.

ORGANIZATION LEGAL NAME

ORGANIZATION EIN

1. Does your organization have a Single Audit (within the last 2 years) on file with the Federal Audit Clearinghouse? Sent to Chris Battaglia.
 If yes, sign and upload form.
 If no, complete form in its entirety.
2. Has your organization been suspended or debarred from any government contracting process? If yes, please explain.
No.
3. Has your organization managed a federal award before? If yes, provide a summary of your most recent award, including period of performance, awarding agency, federal program, and size of award.
Yes, in 2005 the City was awarded and completed a Transportation Enhancement Program grant. In 2017, the city applied for a received a Bicycle and Pedestrian Grant, however, while in the review stages, we found that implementing the traffic calming measures of the grant were not possible due to the city's infrastructure.
4. Does your organization maintain written accounting policies and procedures applicable to headquarters and, if applicable, field offices? If no, please explain.
The City of Lambertville follows the policies and procedures for procurement as outlined by the State of New Jersey. The policies and procedures for procurement are also in the city's administrative code.
5. Does your accounting system (or other management system) allow organizational expenses to be tracked: (a) to a specific project on which your organization is working; (b) to specific tasks within that project; and, (c) to specific cost-type categories within each task (e.g., materials, supplies, travel, etc.)? If no, please explain.
Yes.

APPLICANT CONTROLS AND CAPABILITIES QUESTIONNAIRE



6. Does your organization have a timekeeping system or documented process that allows staff time to be tracked: (a) to a particular project on which staff spends time; and, (b) to specific tasks within each project? If no, please explain.

Staff will track time using a detailed time sheet.

7. Does your organization maintain employment agreements or other formal evidence of employment between it and its employees? If no, please explain.

We have letters of hire and/or resolutions for all statutory employees.

8. Does your organization maintain basic property and casualty insurance? If no, please explain.

Yes.

9. Is your organization able to perform the project on a cost-reimbursable basis? If no, please explain by providing the following information: (a) current cash on hand amount, (b) advance funding required, and (c) purpose of advance funding.

Yes, we would obtain a bond for the project.

10. Does your organization maintain a written policy on conflict of interest? Would your organization's policy on conflict of interest operate to notify NFWF if your organization finds that it is unable to satisfactorily manage a conflict of interest pertinent to a NFWF-funded project? If no, please explain.

Yes.

11. Does your organization maintain a written procurement policy? If no, please explain.

Yes.

12. If your proposed project includes contracts and/or sub-recipients, has an appropriate legal/contracting officer at your organization reviewed such elements and confirmed that your organization indeed has the ability to implement the arrangements as envisioned?

Yes.

13. Does your organization maintain written policies for property management and do you perform inventory audits/verifications on a regular basis? [APPLICABLE TO PROJECTS WITH EQUIPMENT OR SUPPLIES BUDGETED]

Yes.

14. In the past three (3) years has your organization, or any unit or office thereof, been audited by an external donor/funder or agent thereof? (This would include, but not be limited to, audits of your organization by governmental entities.) If yes, please list all such audits.

Yes.

I certify to the best of my knowledge and belief that the above information is true, complete, and accurate and that I am authorized to submit on behalf of the organization represented above.

APPLICANT CONTROLS AND CAPABILITIES QUESTIONNAIRE



SIGNATURE

Andrew J. Nowick

NAME AND TITLE

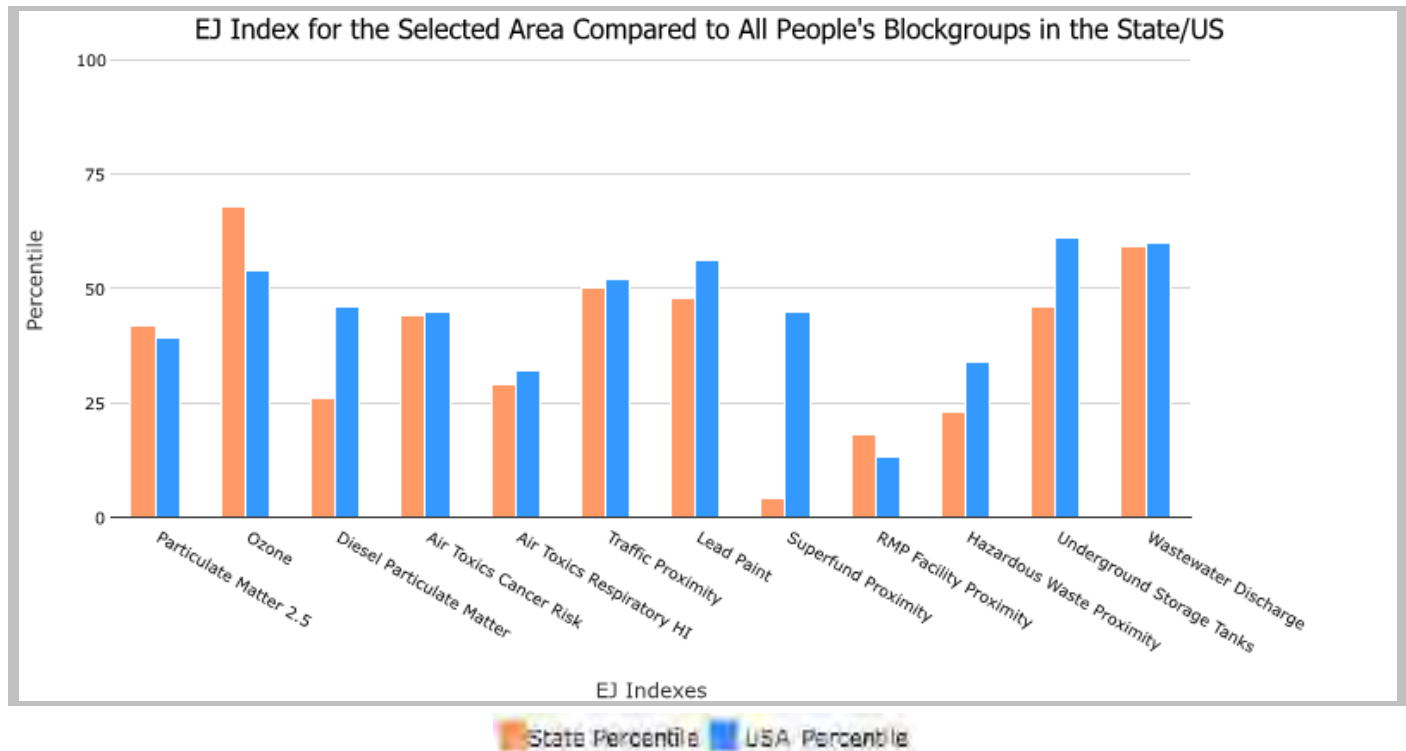
Andrew J. Nowick, Mayor

Blockgroup: 340190119001,340190119002,340190119003, NEW JERSEY, EPA Region 2

Approximate Population: 3,809

Input Area (sq. miles): 1.22

Selected Variables	State Percentile	USA Percentile
Environmental Justice Indexes		
EJ Index for Particulate Matter 2.5	42	39
EJ Index for Ozone	68	54
EJ Index for Diesel Particulate Matter*	26	46
EJ Index for Air Toxics Cancer Risk*	44	45
EJ Index for Air Toxics Respiratory HI*	29	32
EJ Index for Traffic Proximity	50	52
EJ Index for Lead Paint	48	56
EJ Index for Superfund Proximity	4	45
EJ Index for RMP Facility Proximity	18	13
EJ Index for Hazardous Waste Proximity	23	34
EJ Index for Underground Storage Tanks	46	61
EJ Index for Wastewater Discharge	59	60



This report shows the values for environmental and demographic indicators and EJSCREEN indexes. It shows environmental and demographic raw data (e.g., the estimated concentration of ozone in the air), and also shows what percentile each raw data value represents. These percentiles provide perspective on how the selected block group or buffer area compares to the entire state, EPA region, or nation. For example, if a given location is at the 95th percentile nationwide, this means that only 5 percent of the US population has a higher block group value than the average person in the location being analyzed. The years for which the data are available, and the methods used, vary across these indicators. Important caveats and uncertainties apply to this screening-level information, so it is essential to understand the limitations on appropriate interpretations and applications of these indicators. Please see EJSCREEN documentation for discussion of these issues before using reports.

Blockgroup: 340190119001,340190119002,340190119003, NEW JERSEY, EPA Region 2

Approximate Population: 3,809

Input Area (sq. miles): 1.22



Sites reporting to EPA	
Superfund NPL	0
Hazardous Waste Treatment, Storage, and Disposal Facilities (TSDF)	0

EJScreen Report (Version 2.1)



Blockgroup: 340190119001,340190119002,340190119003, NEW JERSEY, EPA Region 2

Approximate Population: 3,809

Input Area (sq. miles): 1.22

Selected Variables	Value	State Avg.	%ile in State	USA Avg.	%ile in USA
Pollution and Sources					
Particulate Matter 2.5 ($\mu\text{g}/\text{m}^3$)	8.29	8.34	43	8.67	42
Ozone (ppb)	43.6	42.1	95	42.5	64
Diesel Particulate Matter* ($\mu\text{g}/\text{m}^3$)	0.25	0.52	20	0.294	50-60th
Air Toxics Cancer Risk* (lifetime risk per million)	30	29	90	28	80-90th
Air Toxics Respiratory HI*	0.3	0.38	41	0.36	<50th
Traffic Proximity (daily traffic count/distance to road)	610	920	61	760	71
Lead Paint (% Pre-1960 Housing)	0.52	0.4	57	0.27	74
Superfund Proximity (site count/km distance)	0.057	0.45	2	0.13	48
RMP Facility Proximity (facility count/km distance)	0.068	0.76	11	0.77	9
Hazardous Waste Proximity (facility count/km distance)	0.22	3.3	17	2.2	33
Underground Storage Tanks (count/km ²)	7.7	15	50	3.9	85
Wastewater Discharge (toxicity-weighted concentration/m distance)	0.082	0.24	87	12	83
Socioeconomic Indicators					
Demographic Index	20%	33%	36	35%	32
People of Color	21%	45%	30	40%	40
Low Income	19%	22%	55	30%	34
Unemployment Rate	4%	6%	44	5%	48
Limited English Speaking Households	1%	7%	40	5%	57
Less Than High School Education	5%	10%	40	12%	33
Under Age 5	2%	6%	25	6%	24
Over Age 64	26%	16%	84	16%	82

*Diesel particulate matter, air toxics cancer risk, and air toxics respiratory hazard index are from the EPA's Air Toxics Data Update, which is the Agency's ongoing, comprehensive evaluation of air toxics in the United States. This effort aims to prioritize air toxics, emission sources, and locations of interest for further study. It is important to remember that the air toxics data presented here provide broad estimates of health risks over geographic areas of the country, not definitive risks to specific individuals or locations. Cancer risks and hazard indices from the Air Toxics Data Update are reported to one significant figure and any additional significant figures here are due to rounding. More information on the Air Toxics Data Update can be found at: <https://www.epa.gov/haps/air-toxics-data-update>.

For additional information, see: www.epa.gov/environmentaljustice

EJScreen is a screening tool for pre-decisional use only. It can help identify areas that may warrant additional consideration, analysis, or outreach. It does not provide a basis for decision-making, but it may help identify potential areas of EJ concern. Users should keep in mind that screening tools are subject to substantial uncertainty in their demographic and environmental data, particularly when looking at small geographic areas. Important caveats and uncertainties apply to this screening-level information, so it is essential to understand the limitations on appropriate interpretations and applications of these indicators. Please see EJScreen documentation for discussion of these issues before using reports. This screening tool does not provide data on every environmental impact and demographic factor that may be relevant to a particular location. EJScreen outputs should be supplemented with additional information and local knowledge before taking any action to address potential EJ concerns.

The entire Closson property is on a hillside. This is the view from nearly the lowest point, at Main Street.

Ely Creek is to the north (left) of what is shown here.



The historic
Holcombe House

This lawn will be replaced by a meadow, planted with a variety of native grasses and herbaceous perennials to provide food and shelter for diverse pollinator and bird populations. Both caterpillar food and nectar sources will be included. It will transition to early succession uphill, and riparian forest to the north (left).

The property continues to slope down to Ely Creek, and Main Street.

A wooded riparian buffer will be planted on both sides of the creek.

The foreground will become a meadow.



Ely Creek

The historic
Holcombe House

During hurricane
Ida, this gentle
creek became a
torrent that
flowed up and
over Main Street,
contributing to
flooding of homes
and businesses
beyond.

A wooded riparian
buffer will be
planted on both
sides of the creek.



Ely Creek

Main Street

The banks of the creek have been scoured.

The creek banks will be protected, and a wooded riparian buffer will be planted on both sides of the creek.



Ely Creek

In some places the elevation change is quite steep.

The lawn does little to slow or purify stormwater. The new meadow and early succession habitat will be much more effective at managing stormwater while providing significant new wildlife habitat, and walking trails.

Main Street →



The historic
Holcombe House

Transition to
early succession
habitat here →

This will become early successional habitat.

Although currently mowed, some invasive species such as Multi-flora Rose and Mugwort are present, and will need to be managed before planting occurs. We will continue to monitor for invasives after planting.



Near the highest elevation on the property, the ground slopes down to the creek from both the north and south sides. A riparian forest will be planted on both sides of Ely Creek. Invasive species will be managed before planting.

Some regrading for floodplain will be done where appropriate.



Ely Creek

Near the highest elevation on the property. The new riparian forest will capture rain water from the development uphill.

Invasive species such as various Japanese honeysuckles, Wineberry, and Multi-flora Rose will be removed before the new planting occurs.

Ongoing maintenance will ensure the invasives don't return.



Near the highest elevation on the property. The new riparian forest will capture rain water from the development uphill.

